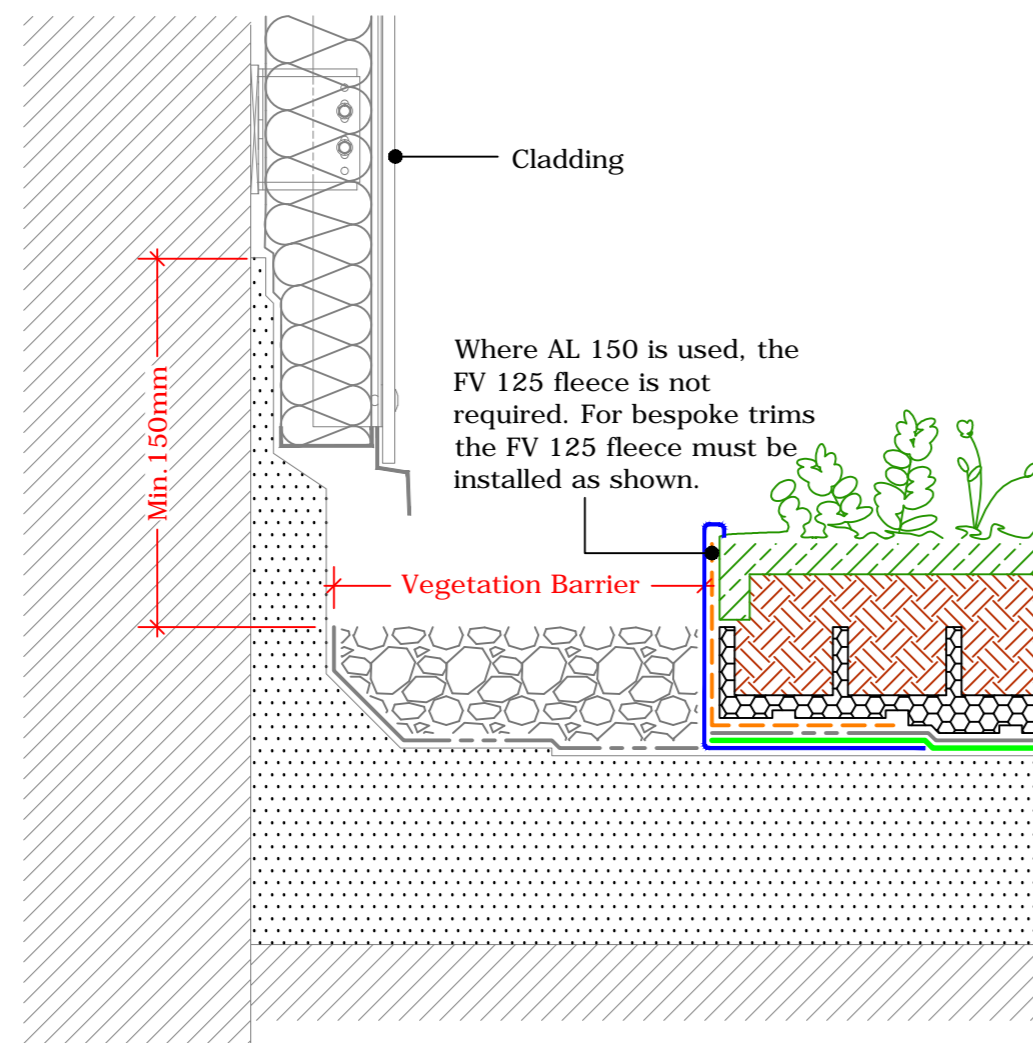
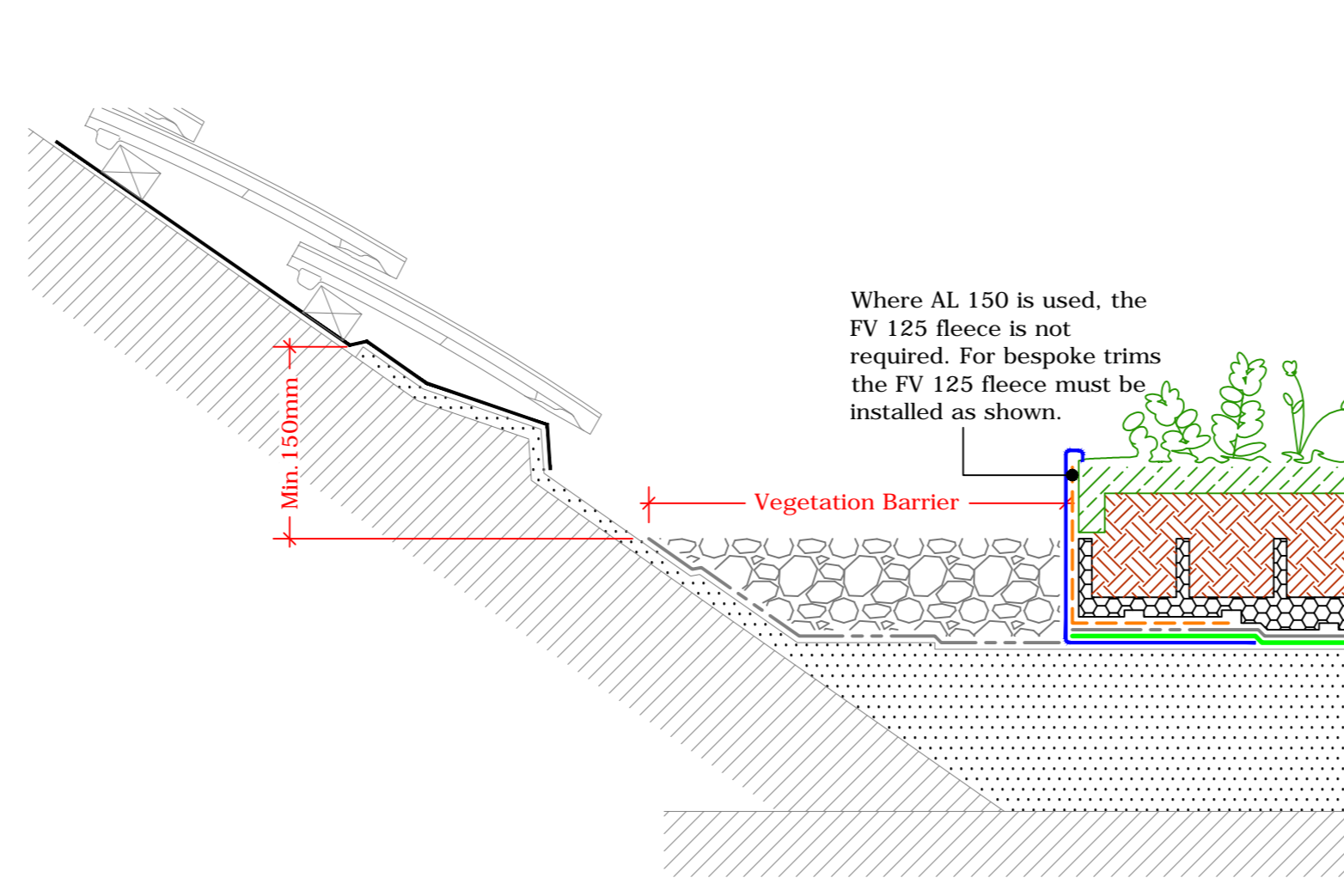


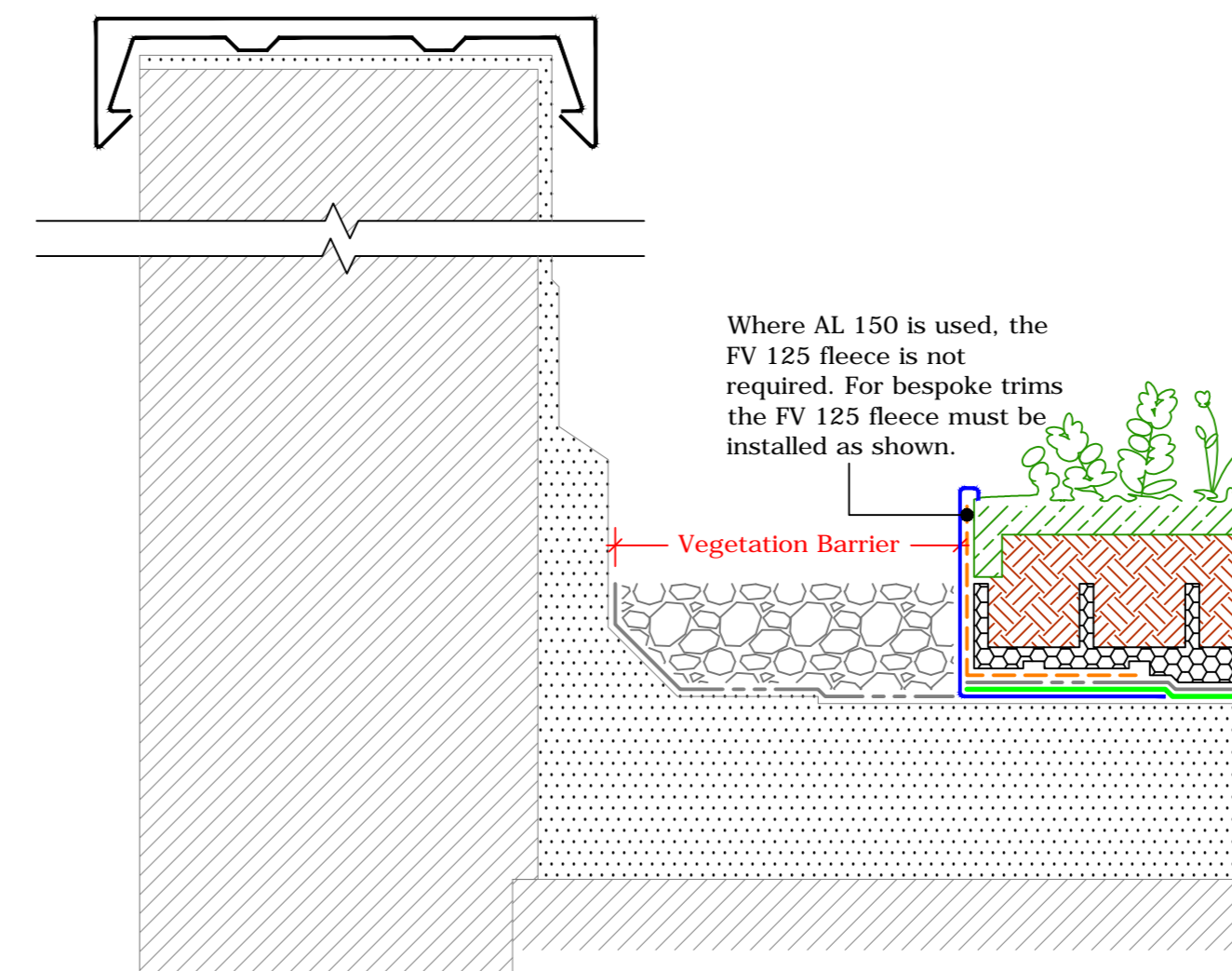
Upstand
(Drg.No: D0901/03-00W_5Deg+_201-ExInt-S-RB_001)



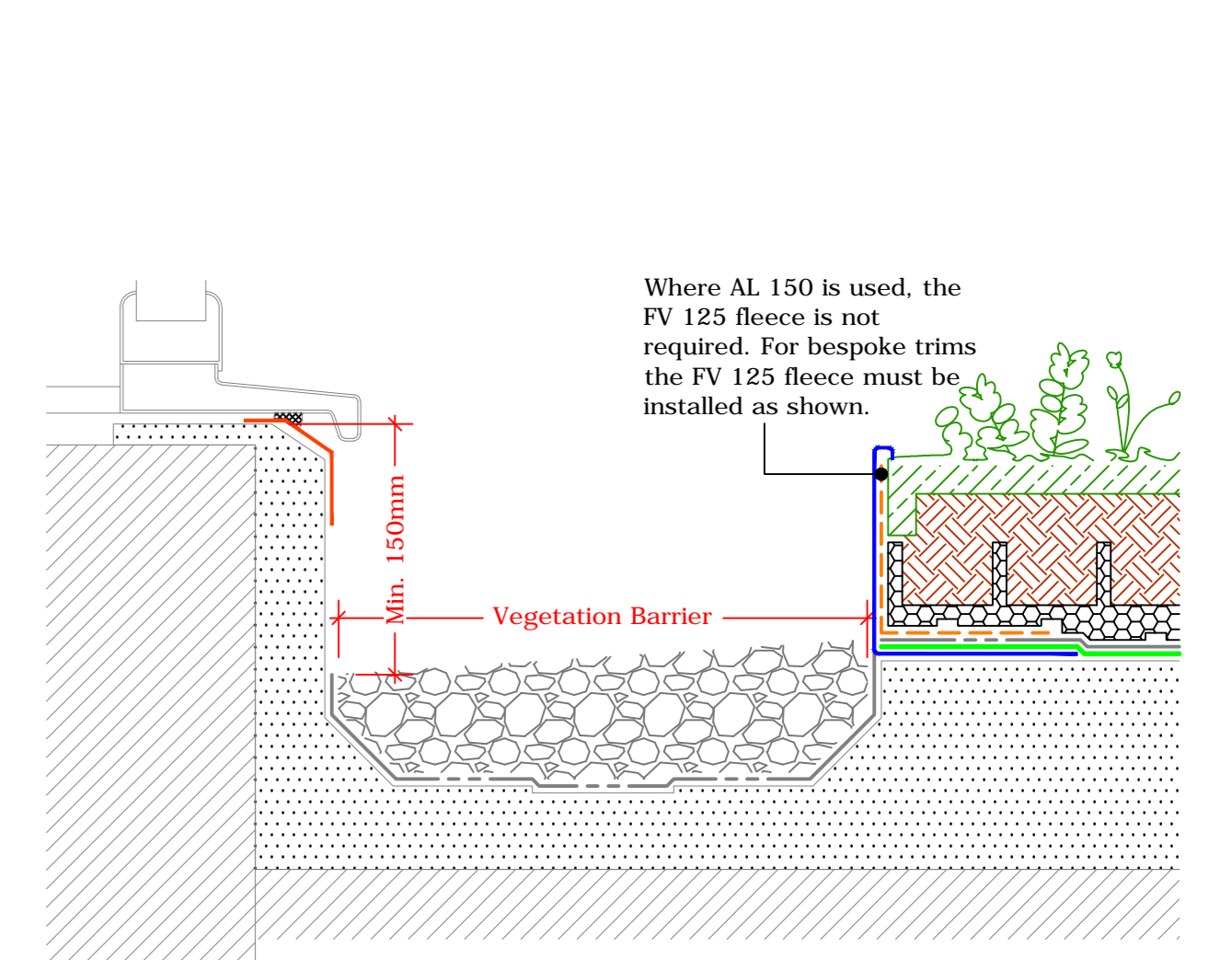
Upstand to Vertical Cladding or Slates/Tiles
(Drg.No: D0901/03-00W_5Deg+_201-ExInt-S-RB_002)



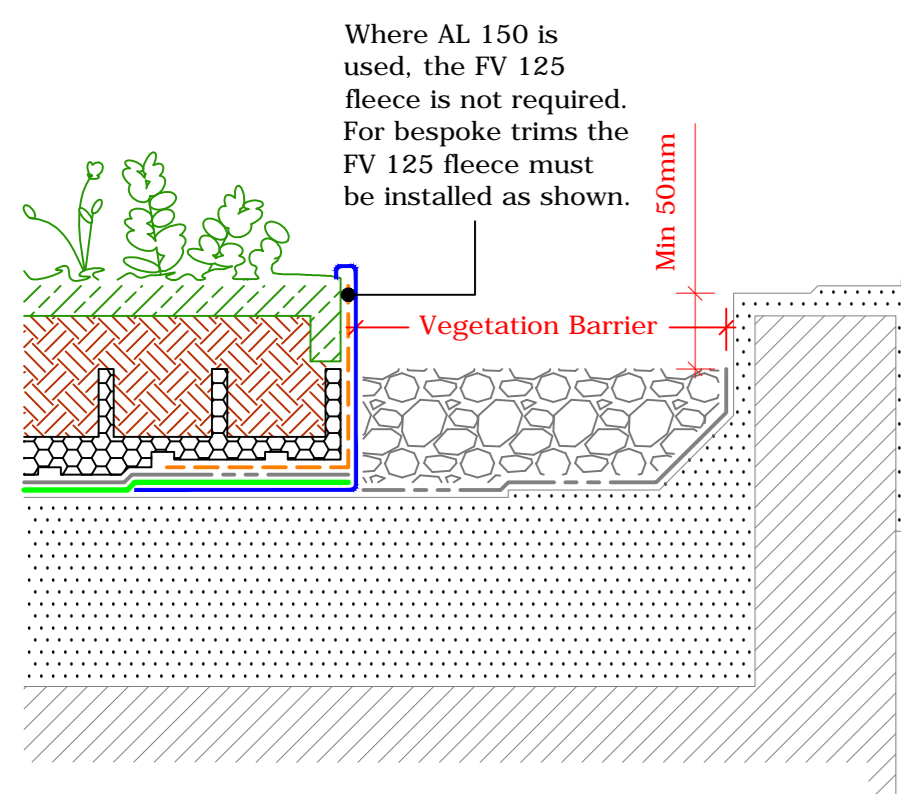
Upstand to Pitched Roof
(Drg.No: D0901/03-00W_5Deg+_001-ExInt-S-RB_004)



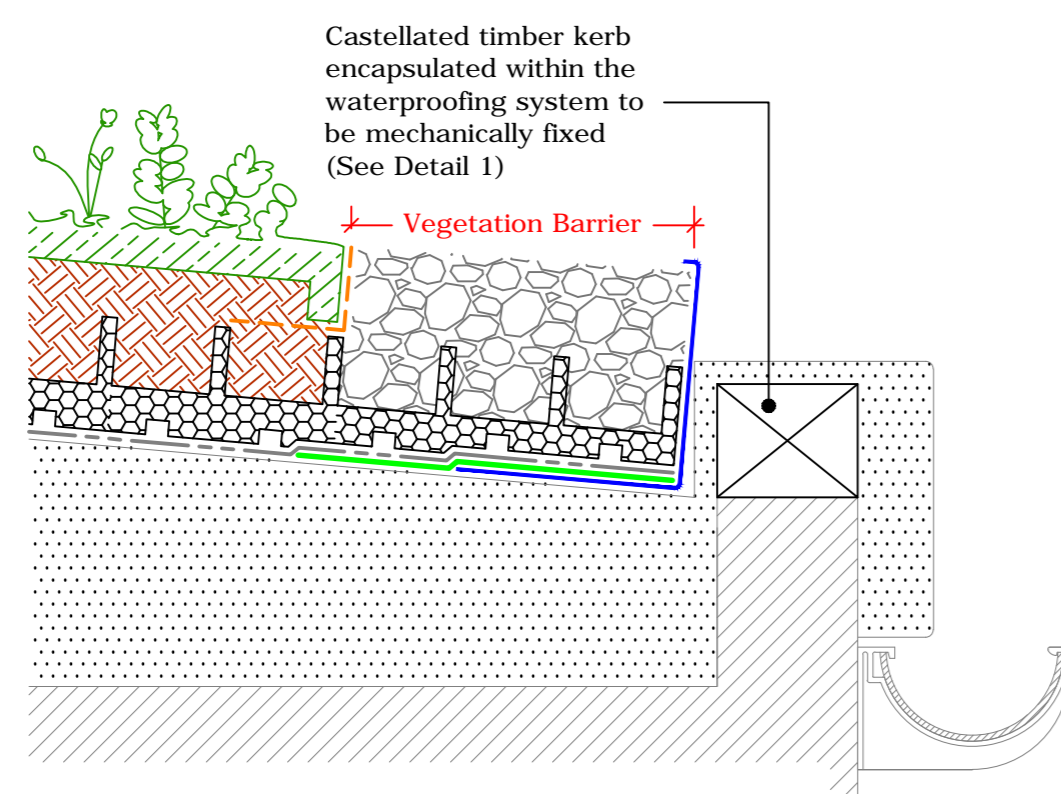
Upstand to Parapet
(Drg.No: D0901/03-00W_5Deg+_203-ExInt-S-RB_001)



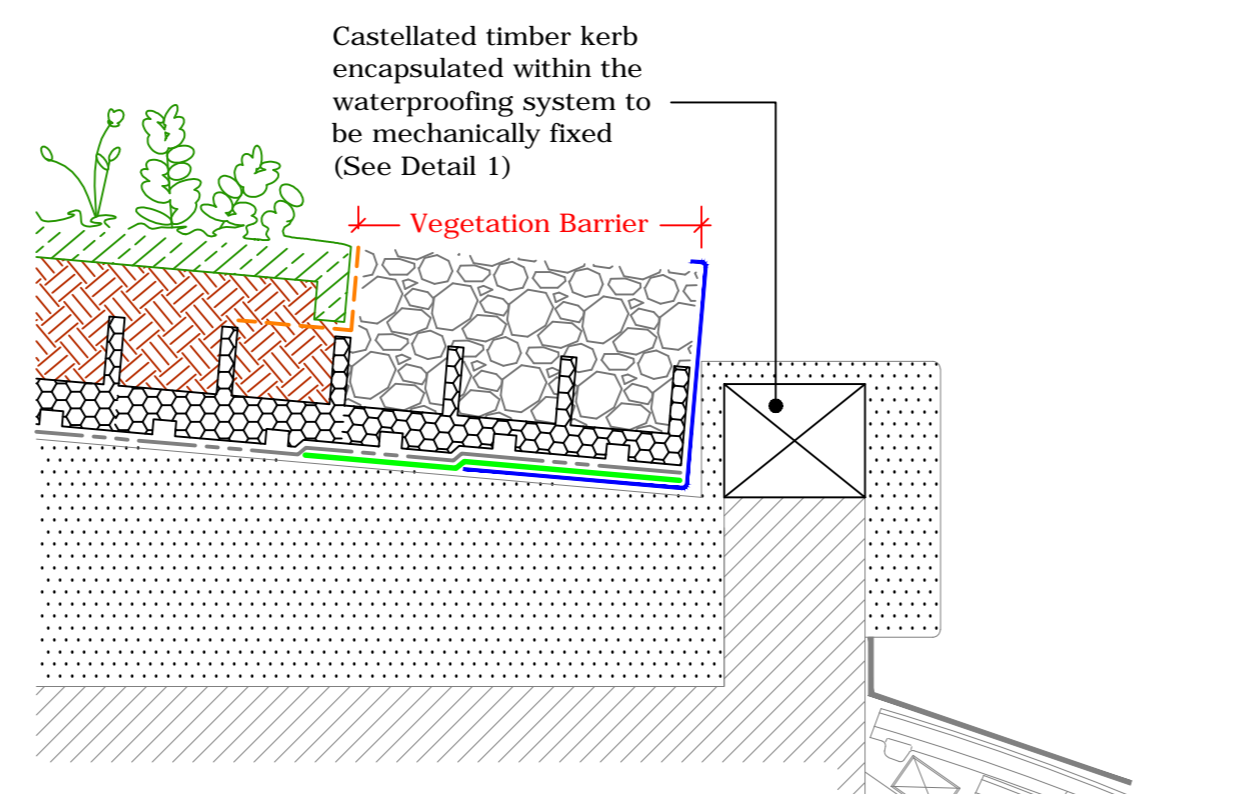
Internal Gutter to Clerestory Window
(Drg.No: D0901/03-00W_5Deg+_206-ExInt-S-RB_003)



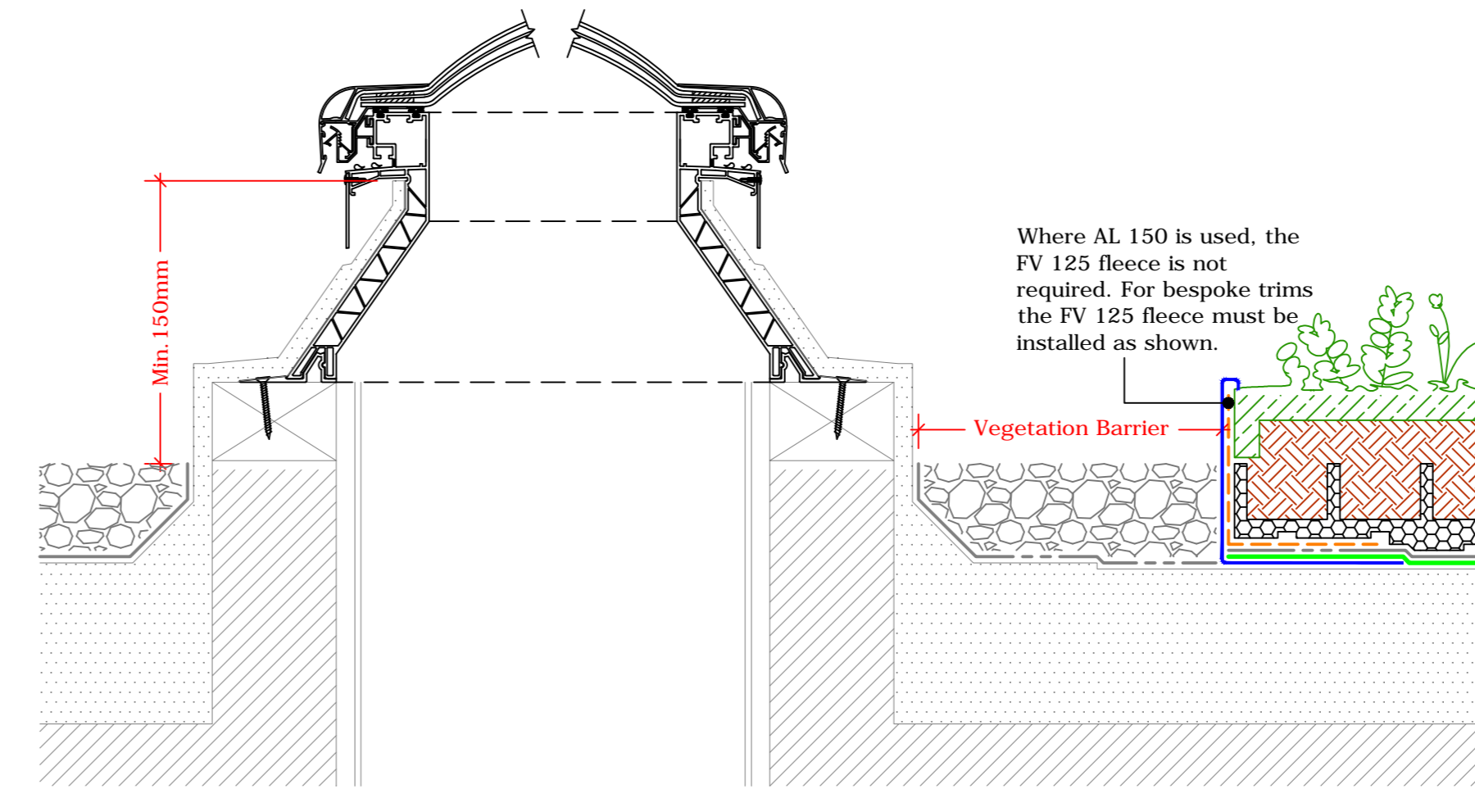
Perimeter Kerb - SUB-EM UK Only
(Drg.No: D0901/03-00W_5Deg+_002-ExInt-S-RB_001)



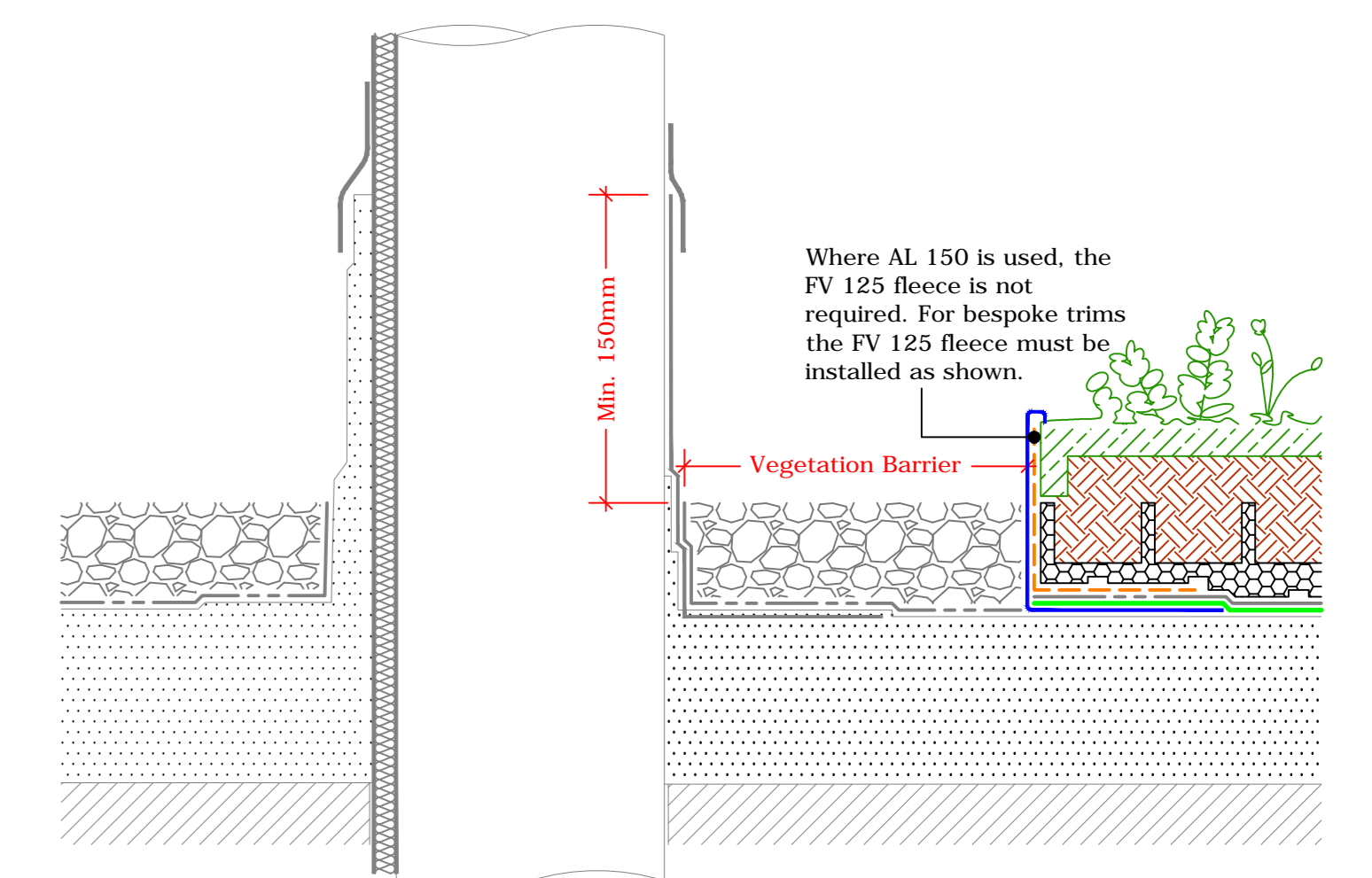
External Gutter - SUB-EM UK Only
(Drg.No: D0901/03-00W_5Deg+_006-ExInt-S-RB_005)



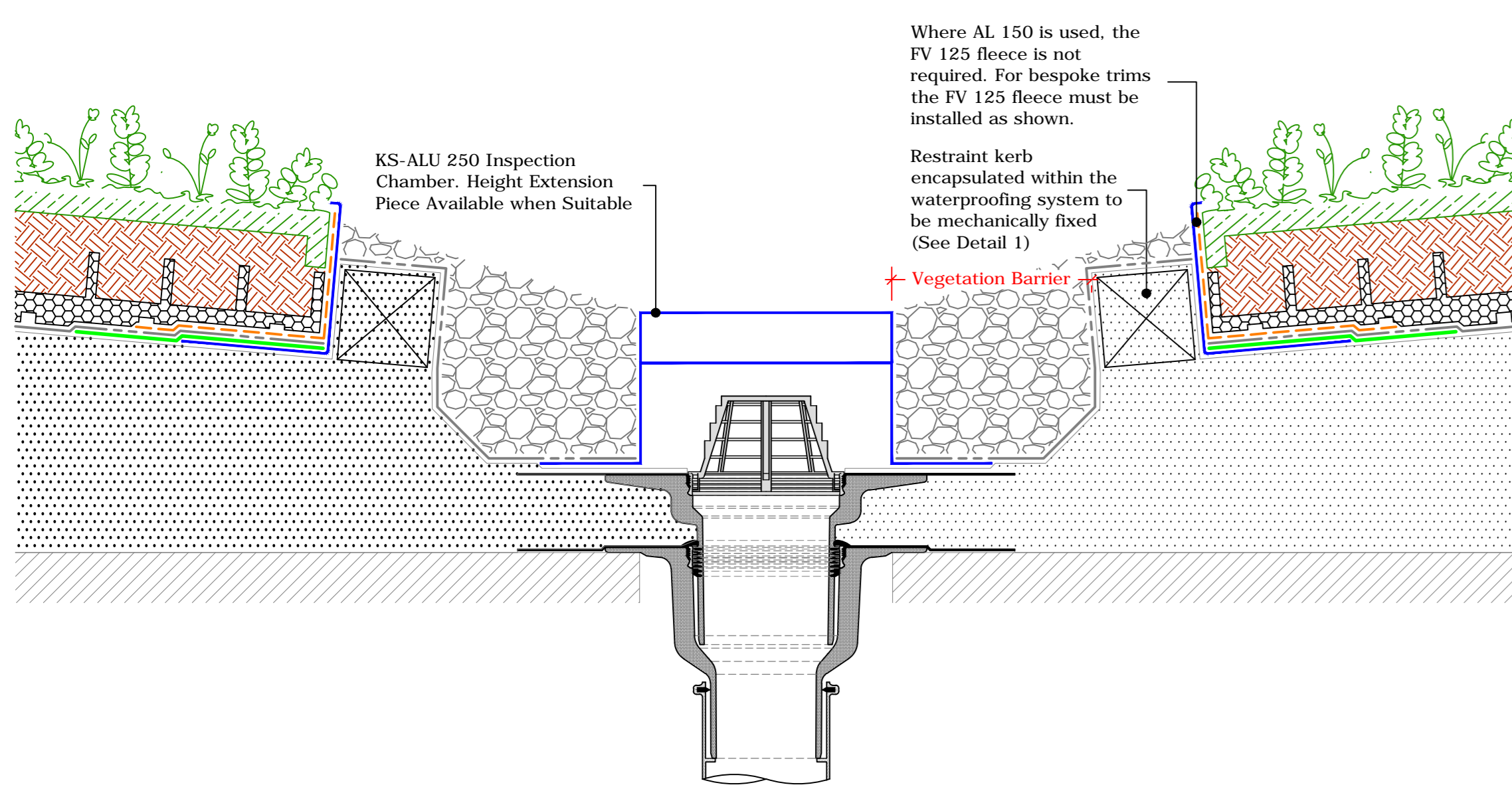
Detail to Mansard Roof - SUB-EM UK Only
(Drg.No: D0901/03-00W_5Deg+_006-ExInt-S-RB_006)



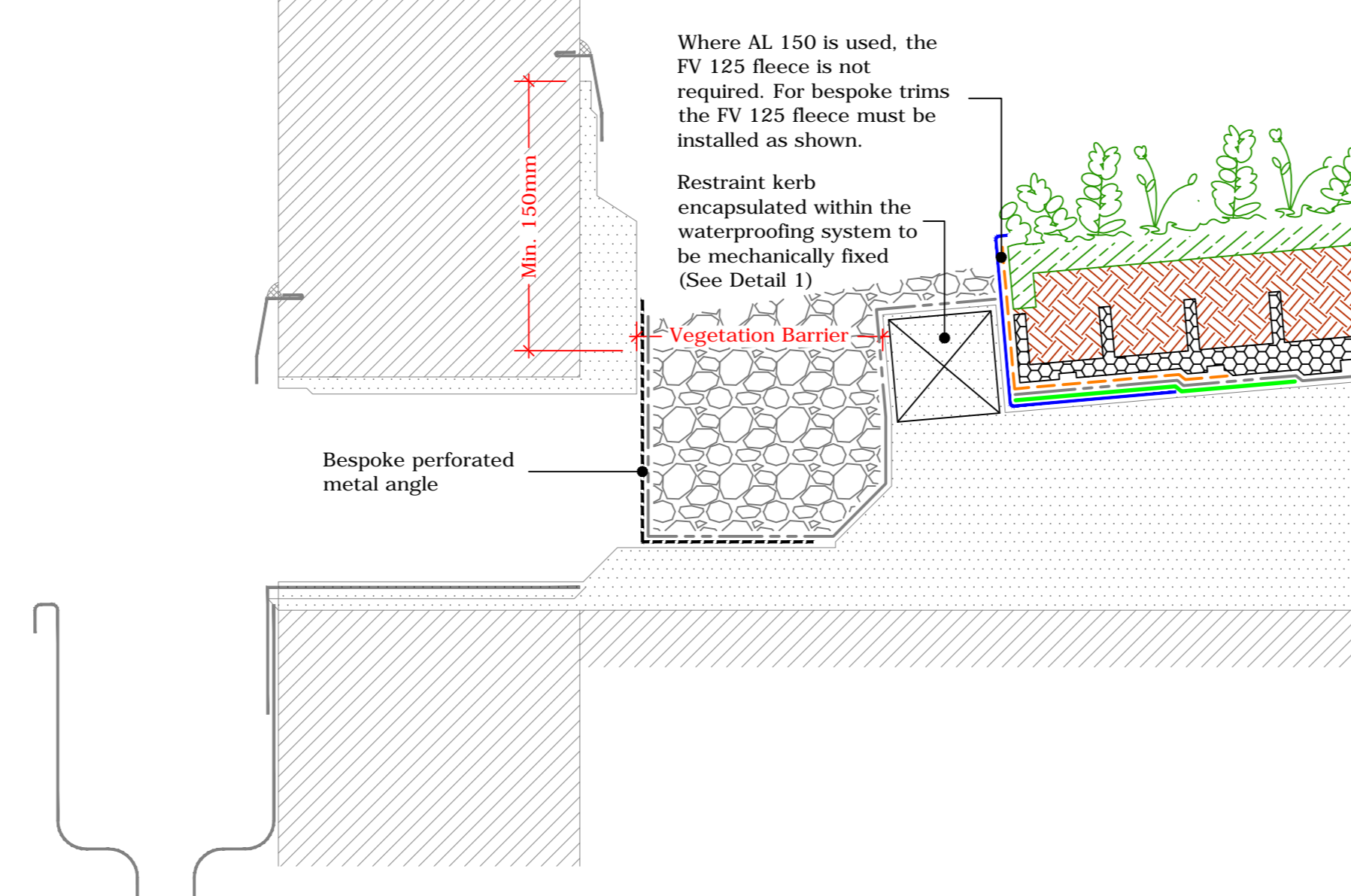
Upstand to Bauder Rooflight - Euroglaze
(Drg.No: D0901/03-00W_5Deg+_008-ExInt-S-RB_001)



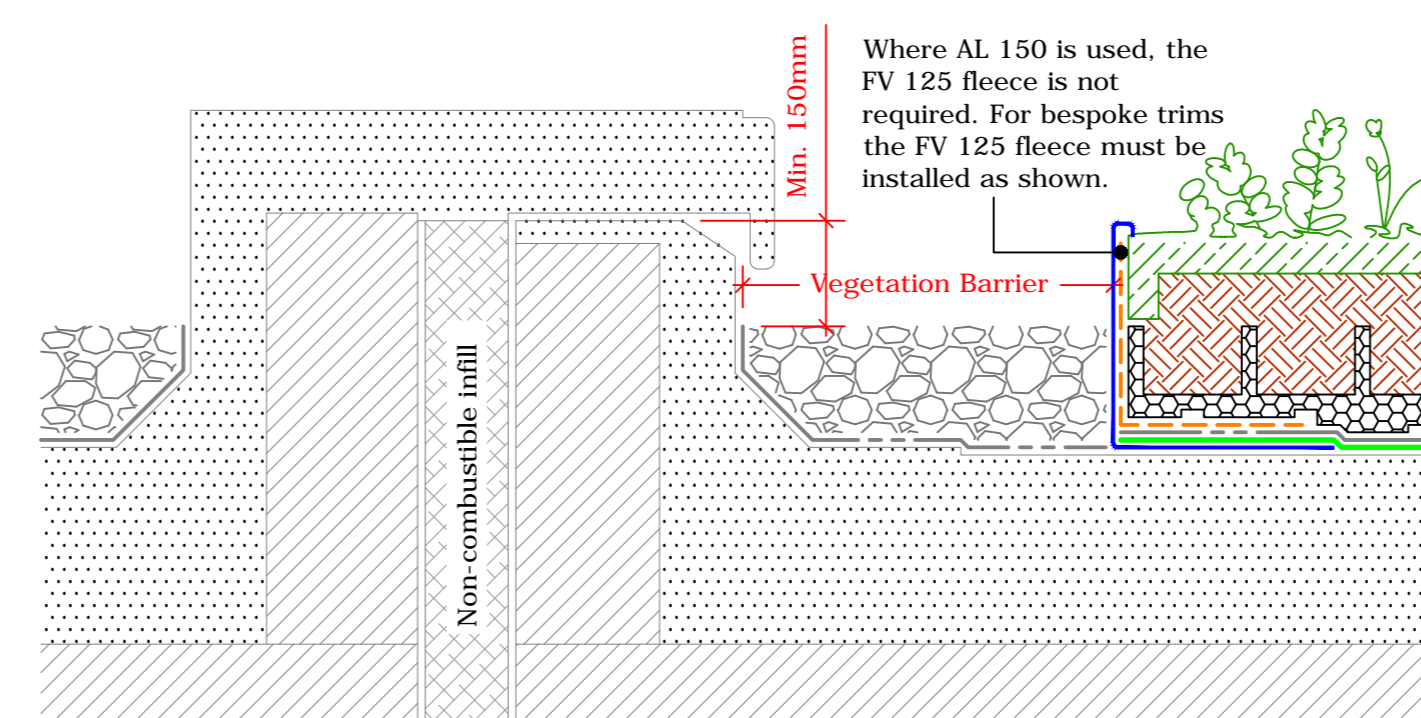
Upstand to Hot Flue or Cold Pipe
(Drg.No: D0901/03-00W_5Deg+_007-ExInt-S-RB_002)



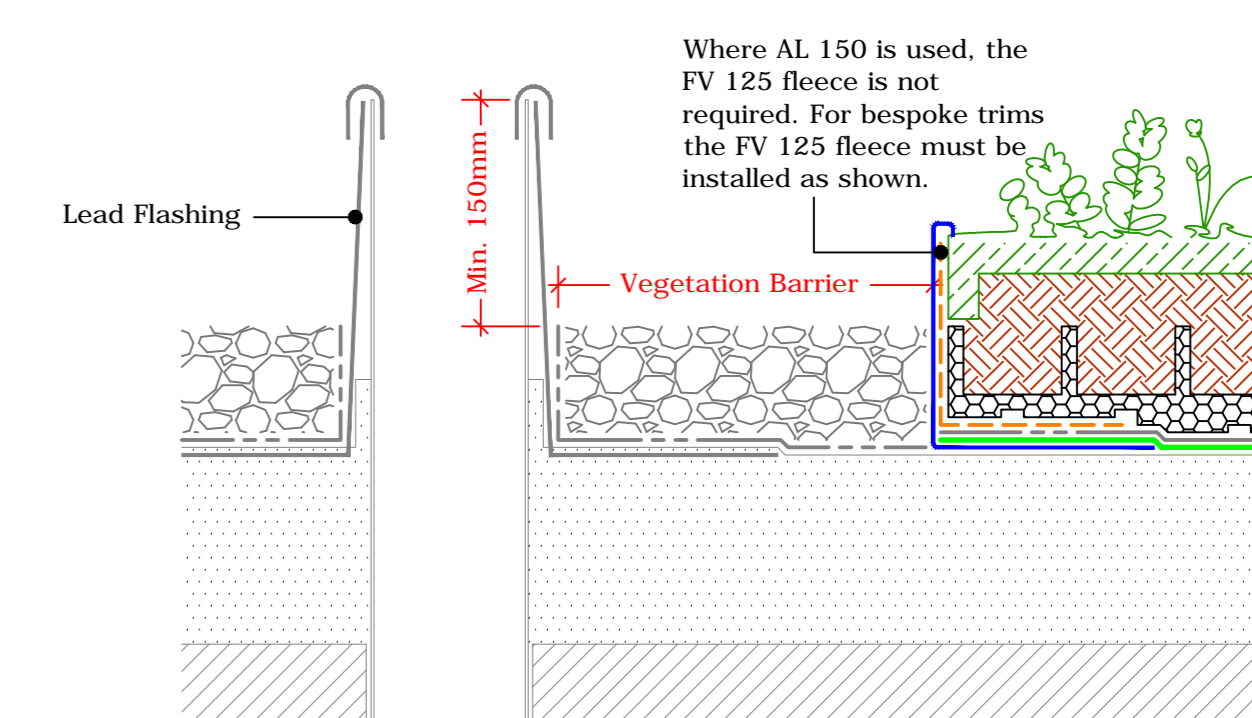
Bauder Outlet - Compact
(Drg.No: D0901/03-00W_5Deg+_006-ExInt-S-RB_001)



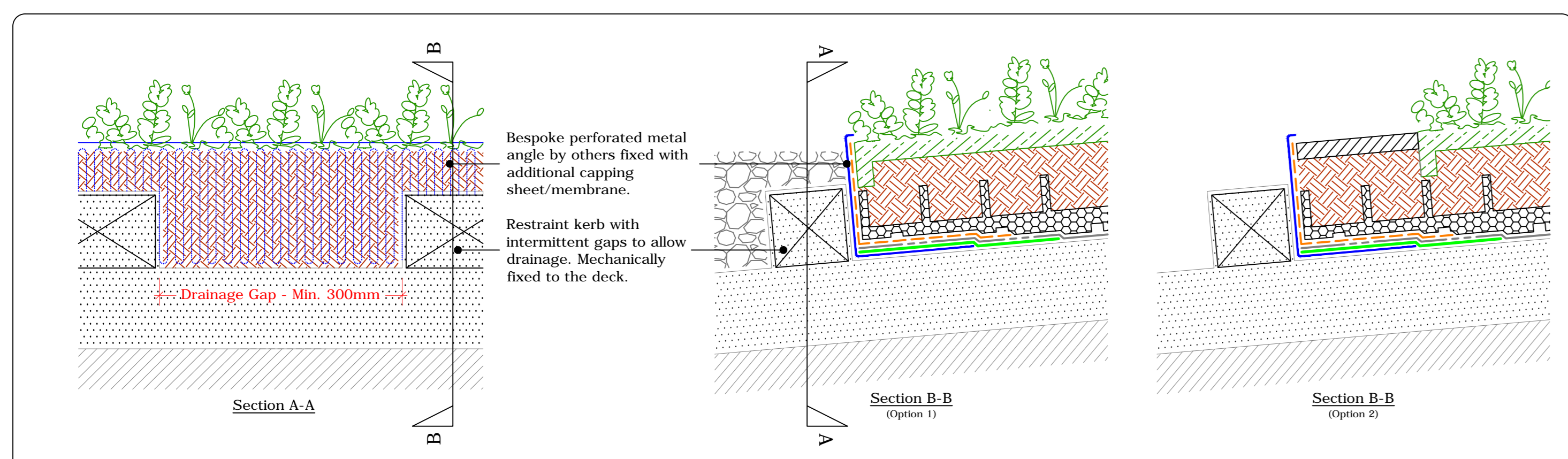
Upstand - Lead Chute
(Drg.No: D0901/03-00W_5Deg+_206-ExInt-S-RB_002)



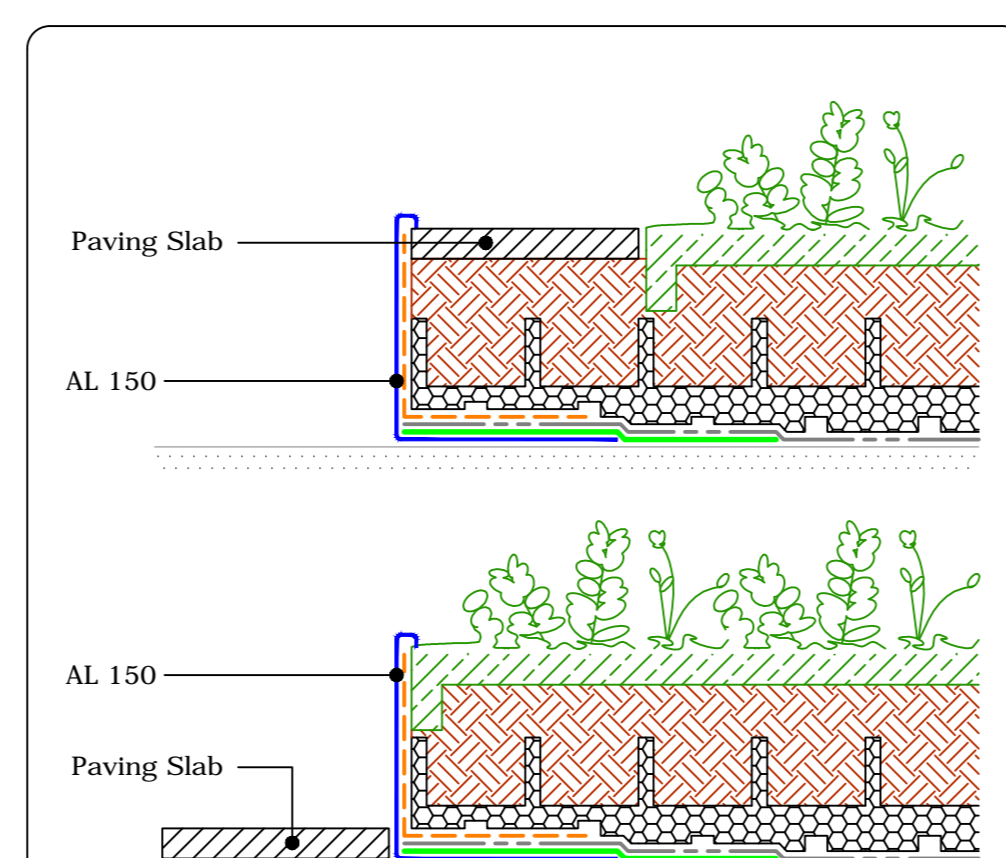
Twin Kerb Expansion Joint
(Drg.No: D0901/03-00W_5Deg+_204-ExInt-S-RB_001)



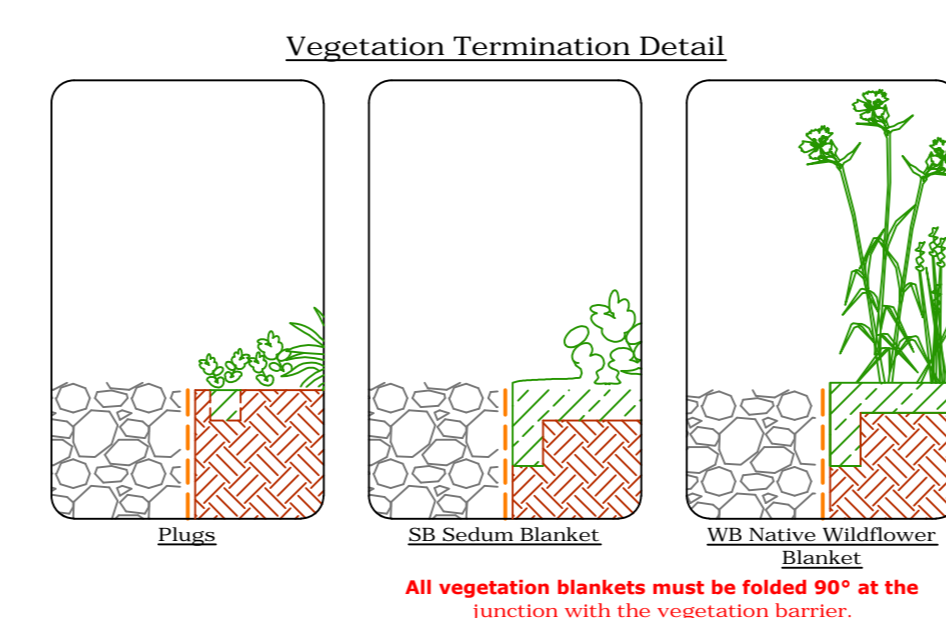
Soil Vent Pipe
(Drg.No: D0901/03-00W_4Deg+_007-ExInt-S-RB_001)



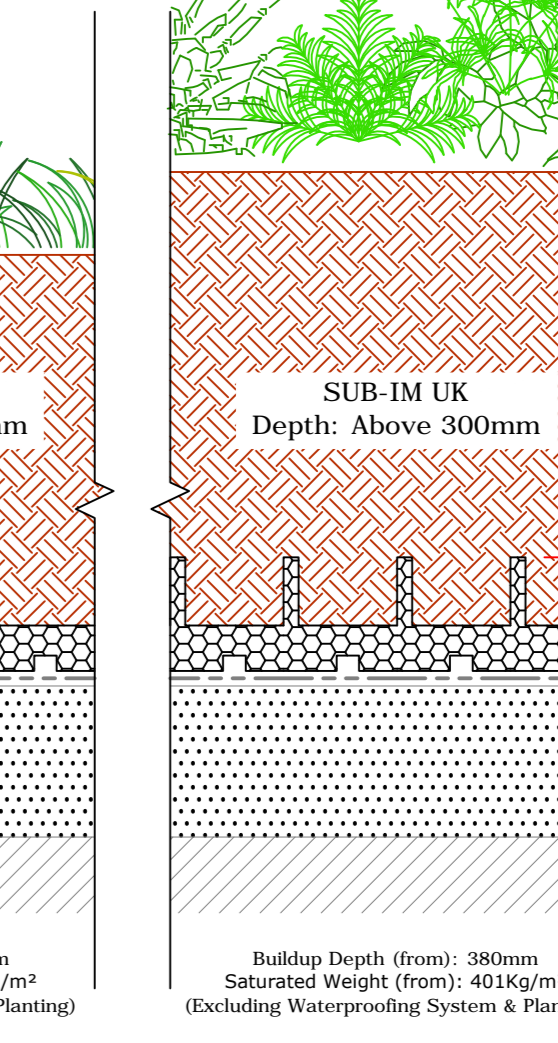
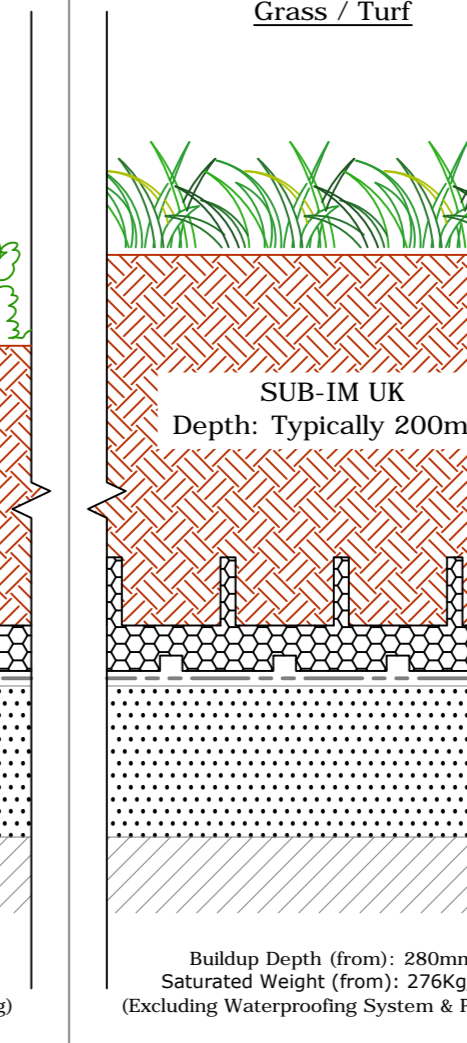
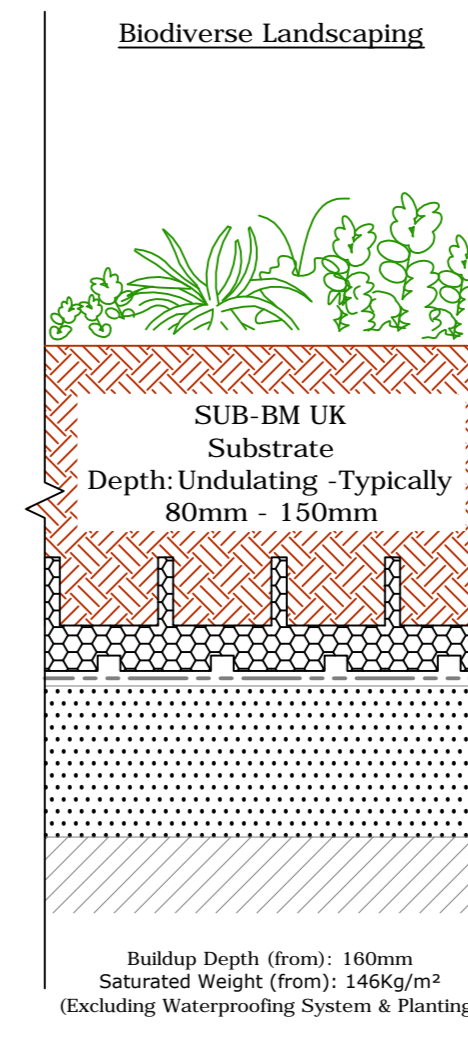
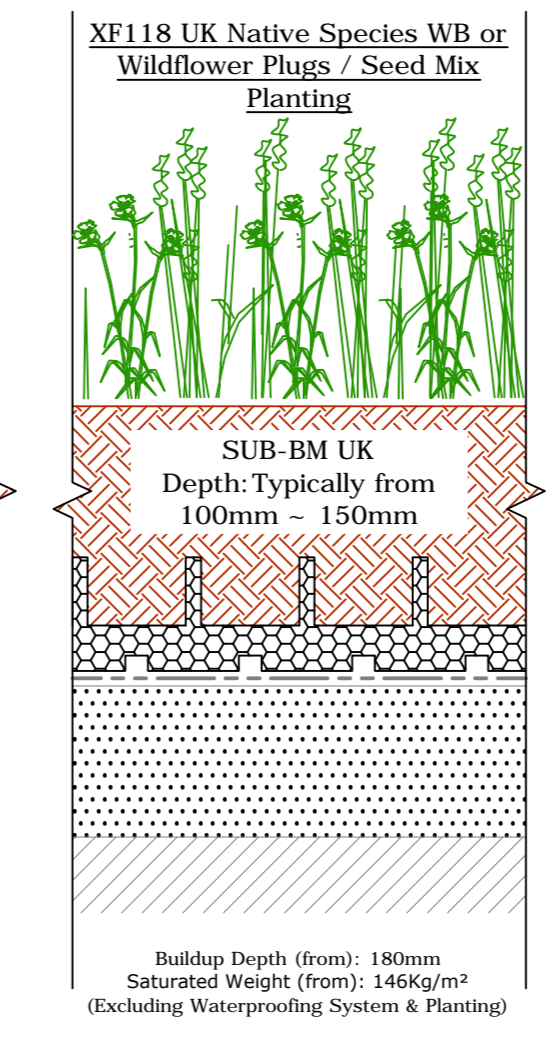
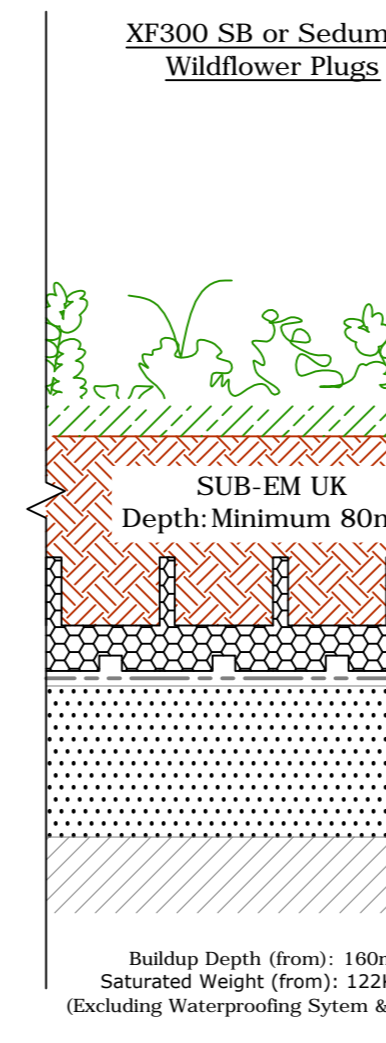
DETAIL 1 - Drainage Layer Restraint Kerb (Roof slope 5°+)
A parapet wall or restraint kerb must be provided to support the water storage / drainage board at the base of the slope. This should be included within the deck construction and reference made within the waterproofing specification also. This in turn will restrain and stabilise the landscaping against imposed shear load forces. Refer to the specification for intermittent drainage gap spacing.



Edge Detail for Slopes 10°+
Where the roof slope is greater than 10°, paving slabs must be used instead of the pebble vegetation barrier. Paving slabs can also be used where the vegetation barrier is undesirable.



All vegetation blankets must be folded 90° at the junction with the vegetation barrier.



Substrate Based Landscape Options
(Heights and weight loadings may vary, allowance must be made for any fully established planting / vegetation and landscaping)

Key

- Plant: Native Species WB, Native Wildflower Blanket
- Substrate: SUB-EM UK Biodiverse Substrate / SUB-EM UK Biodiverse Substrate
- Board: WSP 50 Borevort Board
- Fleece: FV 125 100 / 200 Fiber Fleece - 1m / 2m Roll
- Mat: GOM 9 Rubber Protection Mat
- Sealing: Additional Bauder Capping Sheet / Membrane To Secure The Metal Trim (Refer To Specification For Correct Option)
- System: Bauder Waterproofing System (Refer To Specific Bauder Waterproofing Details Drawings)
- Deck: Deck / Substrate
- Barrier: Vegetation barrier (Minimum Bitum Drop & 300mm Wide. Width Must Be Increased To At Least 500mm When Positioned Adjacent To Openings, Rooflights, Windows Or Door Openings. In Accordance With Both Green And F1 Roof Codes)
- Trim: AL 150 Edge / Drainage Trim. Secured In Place By Separate Pieces Of Trench Applied Bauder Fast Fix Capping Sheet. For Vegetation: Substrate Based Edge Detail. Corner: Must Be 150mm. A Bespoke Perforated Edge / Drainage Trim Is Required

IMPORTANT NOTES:

- This detail is suitable for the following Bauder Systems: Bauder Total Green Roof System
- The Drawing Shows Alternative Options. For The Correct Solution To Be Used, Refer To The Project Specific Specifications.
- Do not scale to ascertain dimensions.
- All dimensions to be checked and verified on site prior to commencement of work.
- This drawing is to be read in conjunction with the specification and associated drawings.
- This detail is a guideline only, representing typical detailing conditions and illustrates the correct application of the above Bauder System. It may be necessary to modify this detail to suit specific project design constraints and applications. For clarity the method of attachment has not been shown.
- Refer to the Bauder Specification for the product description and method of application. For clarity the method of attachment has not been shown.
- Provision should be made by the installer for mechanically fixing the trim.

IMPORTANT NOTE:
This Drawing Shows Alternative Options. For The Correct Solution To Be Used, Refer To The Project Specific Specifications.

BAUDER

UK OFFICE:
Bauder Limited
70 Ladbroke Road, Ipswich, Suffolk, IP1 3JH, UK
Tel: +44 (0)1473 237871
Fax: +44 (0)1473 237871
Email: technical@bauder.co.uk
bauder.co.uk

IRELAND OFFICE:
Bauder Limited
O'Duffy Centre, Cross Lane, Carrilmore, Co. Wexford, Ireland
Tel: +353 (0)402 9662 333
Fax: +353 (0)402 9662 870
Email: technical@bauder.ie
bauder.ie

Extensive/Intensive Green Roof System (Slope 5°+)

Drawing Number: D0901/03-00W_5Deg+_200-ExInt-S-RB_001
Scale: CD
Revised By: DW
Approved By: CR
Date: 14.12.22