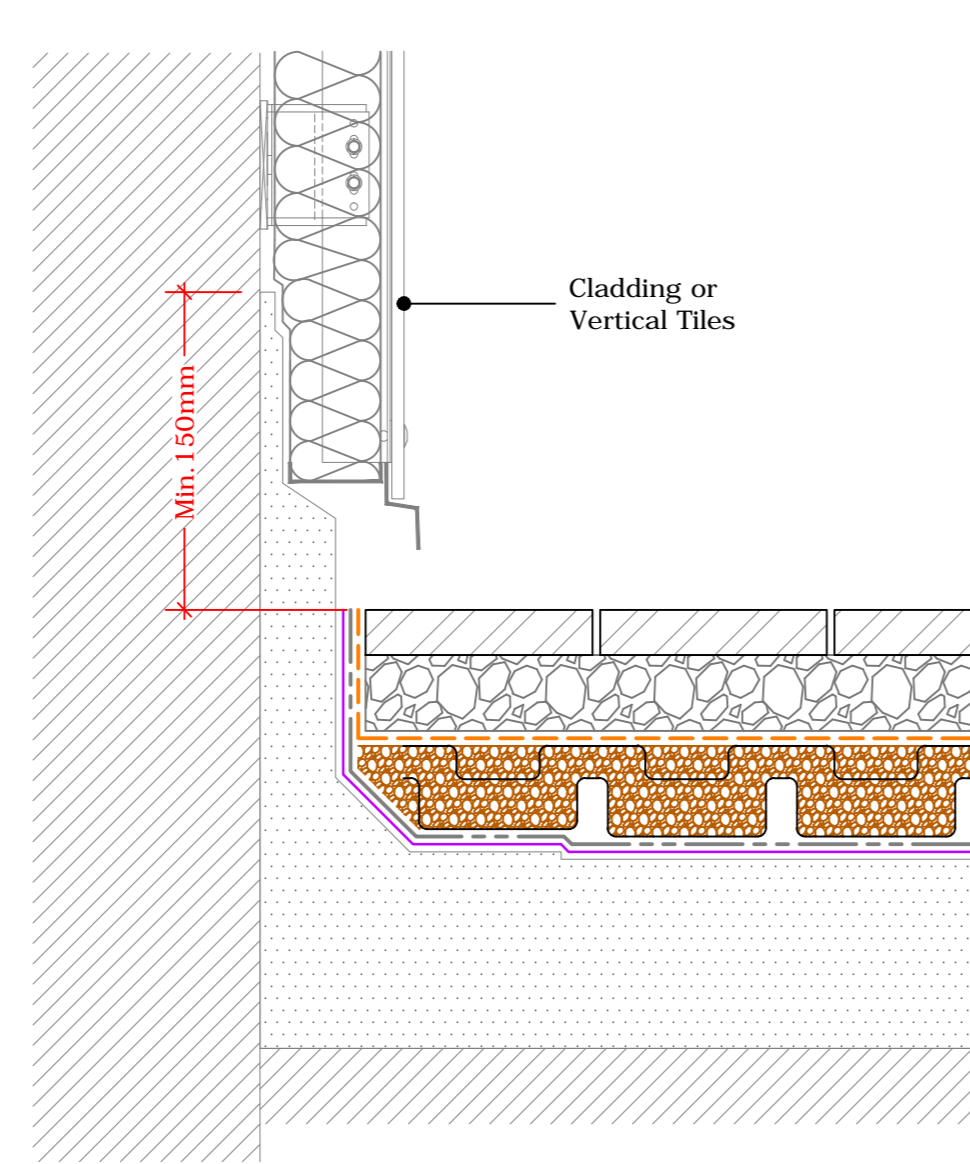
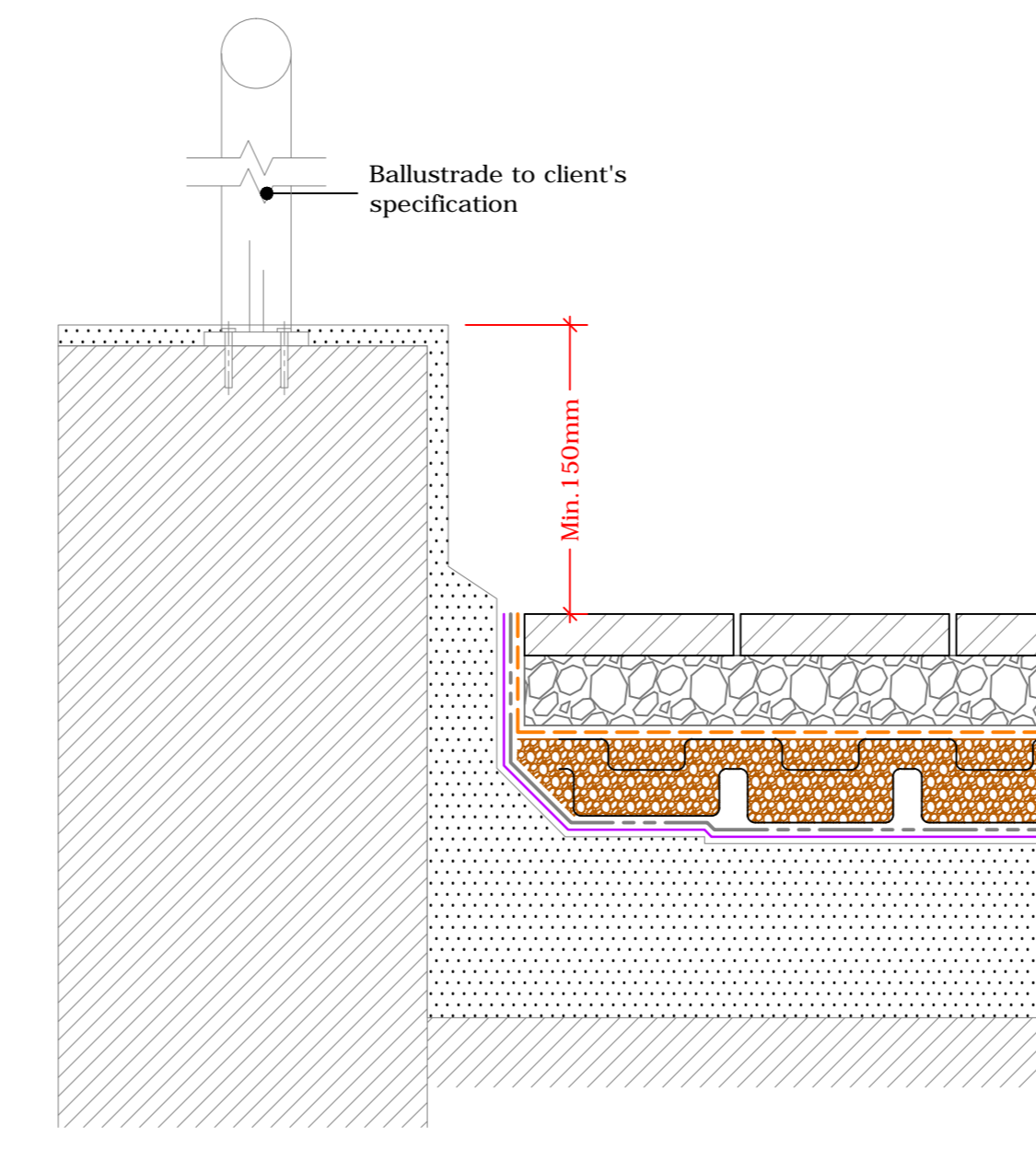


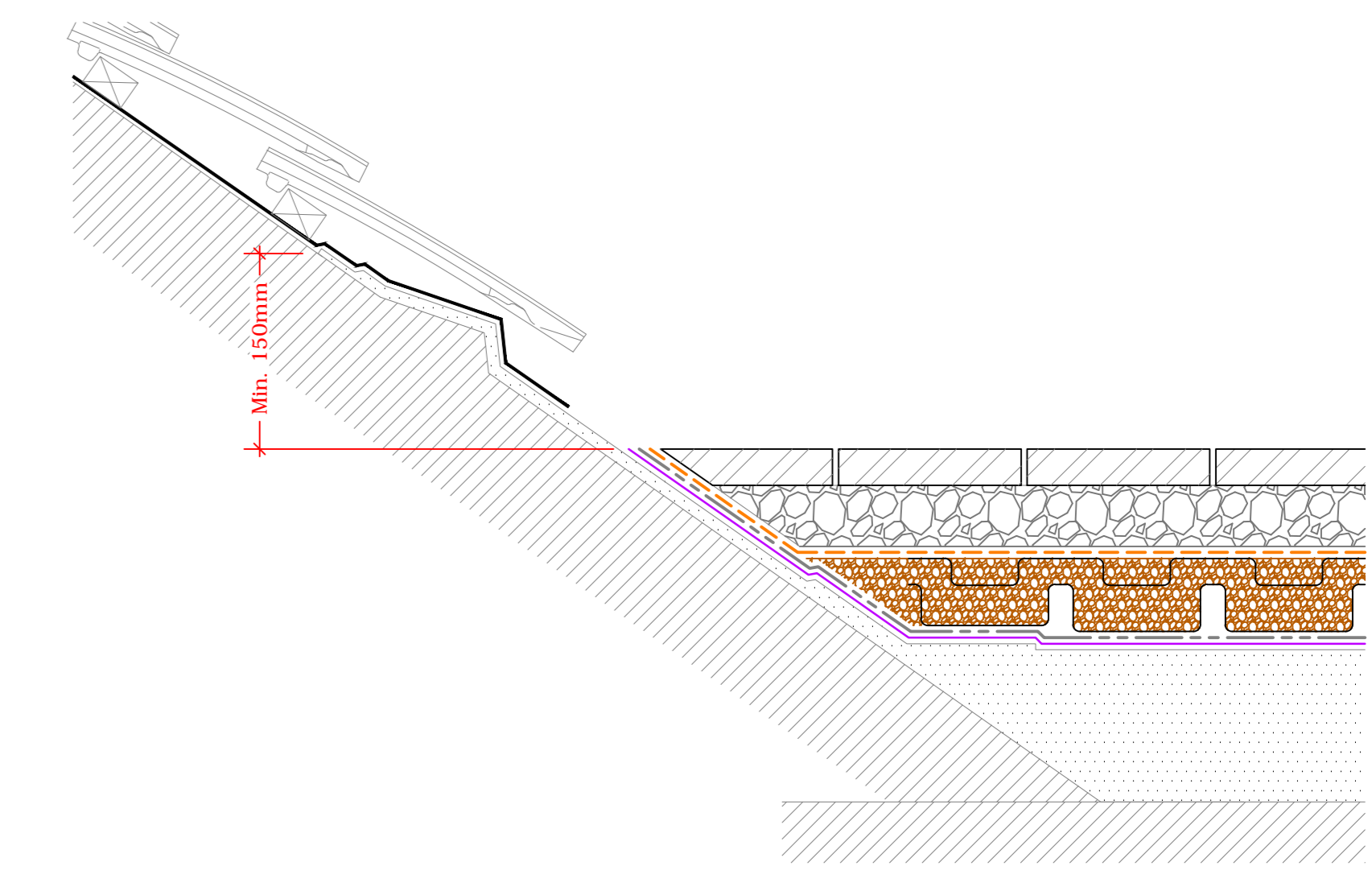
Permeable Paving to Upstand
(Drg.No: D0901-00W_201-Int-PP-D6_001)



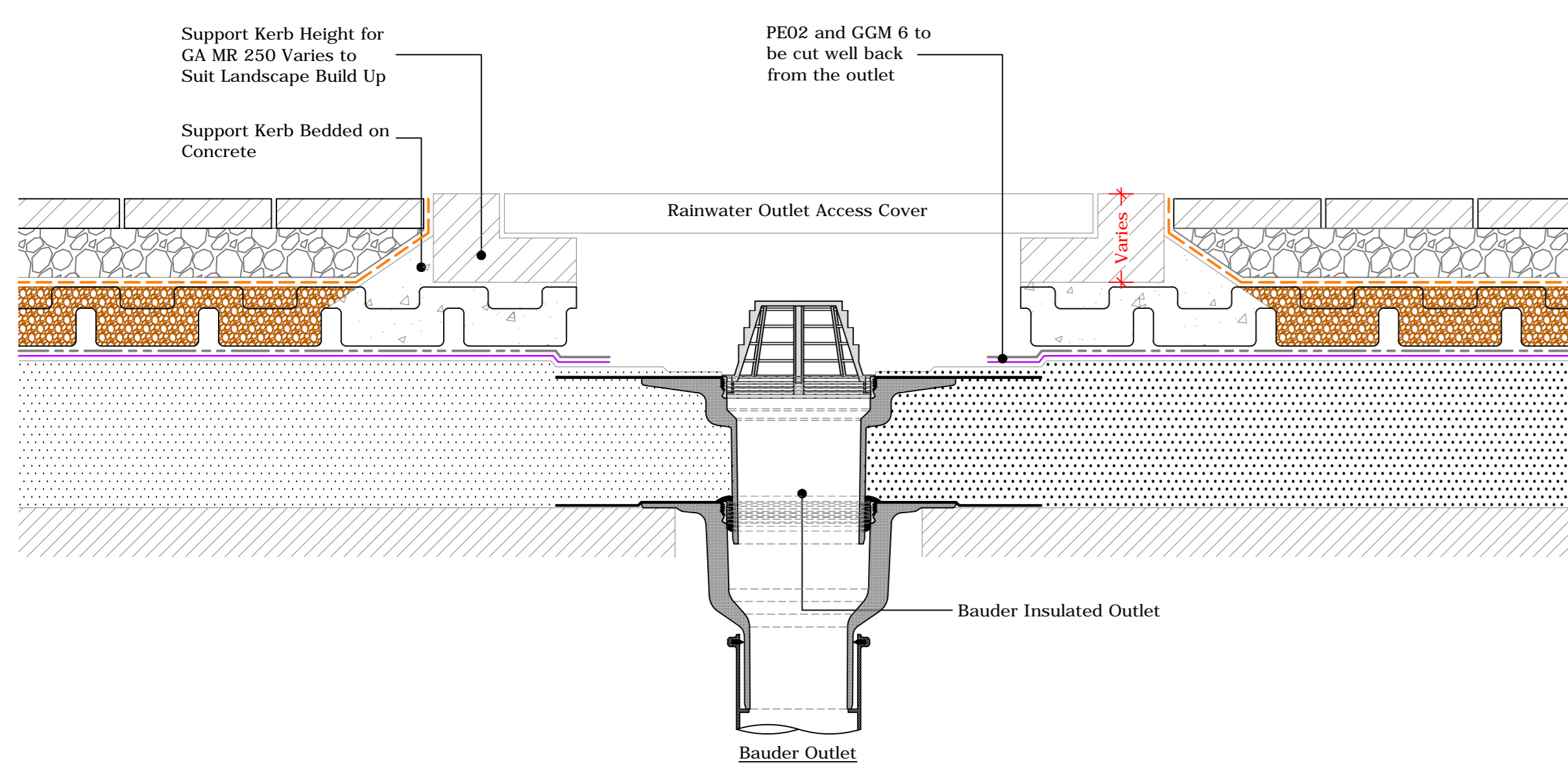
Permeable Paving to Vertical Cladding or Slates/Tiles
(Drg.No: D0901-00W_201-Int-PP-D6_002)



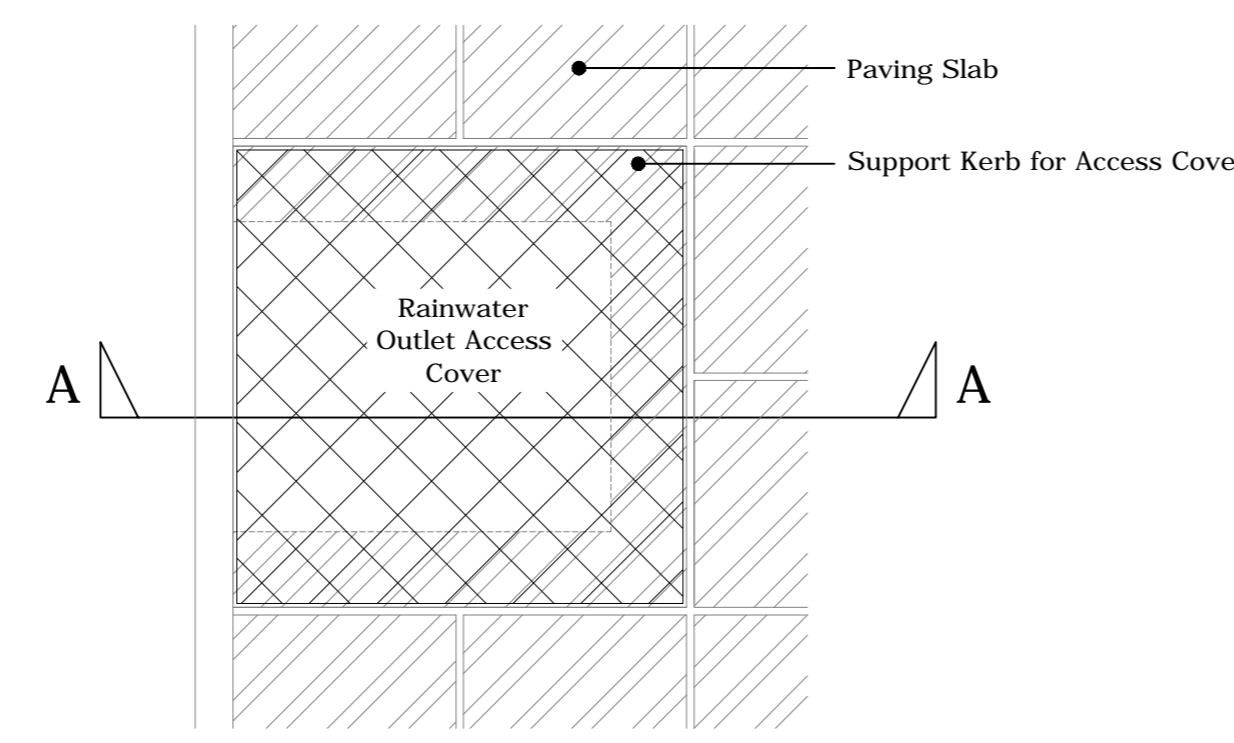
Permeable Paving to Parapet Upstand
(Drg.No: D0901-00W_203-Int-PP-D6_001)



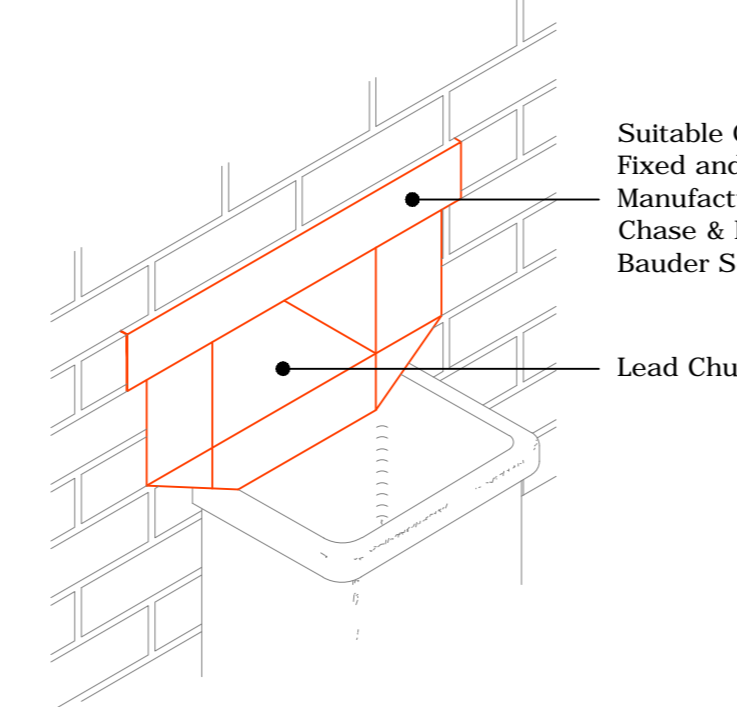
Permeable Paving to Pitched Roof
(Drg.No: D0901-00W_001-Int-PP-D6_004)



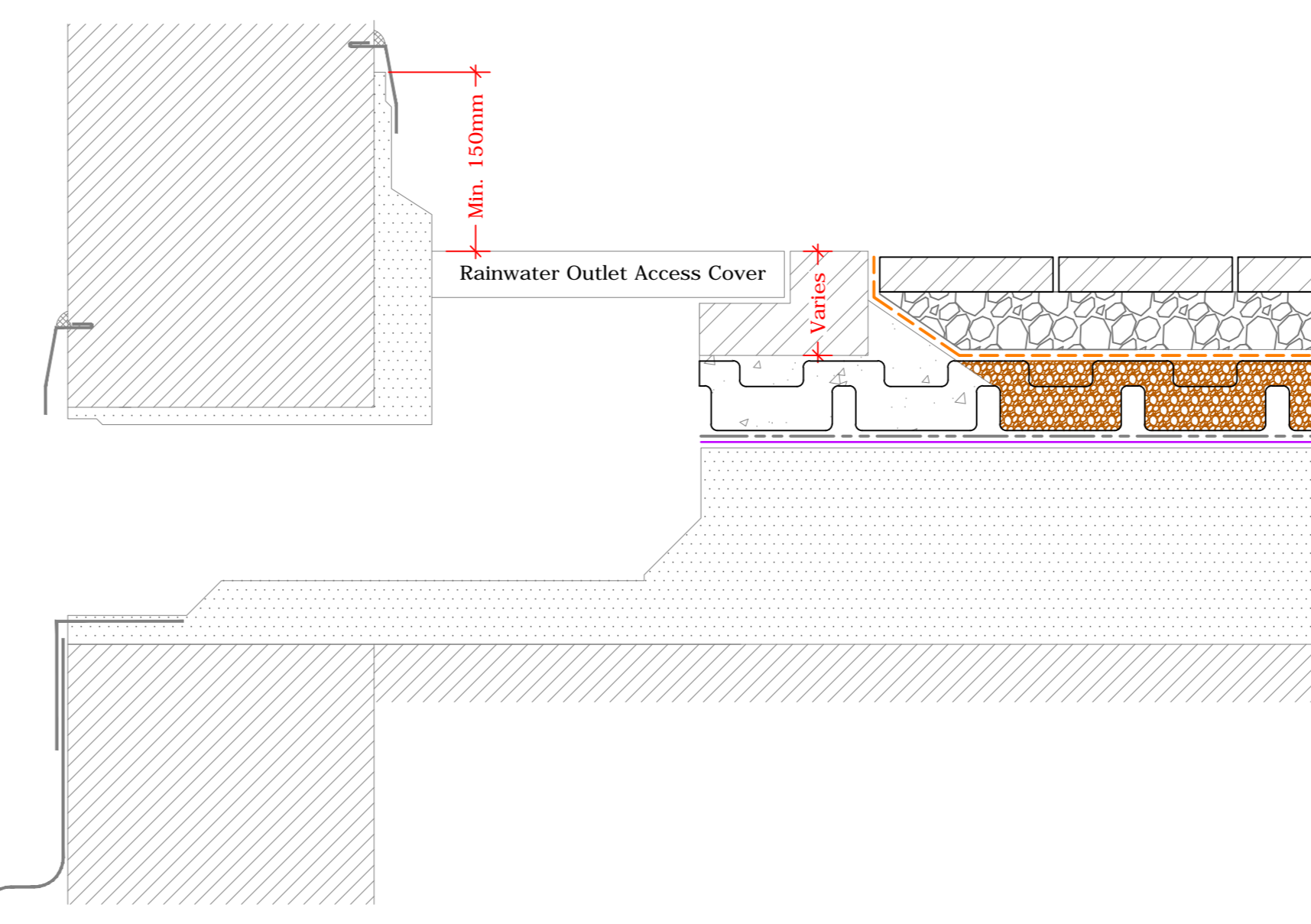
Permeable Paving to Bauder Outlet - Compact
(Drg.No: D0901-00W_006-Int-PP-D6_001)



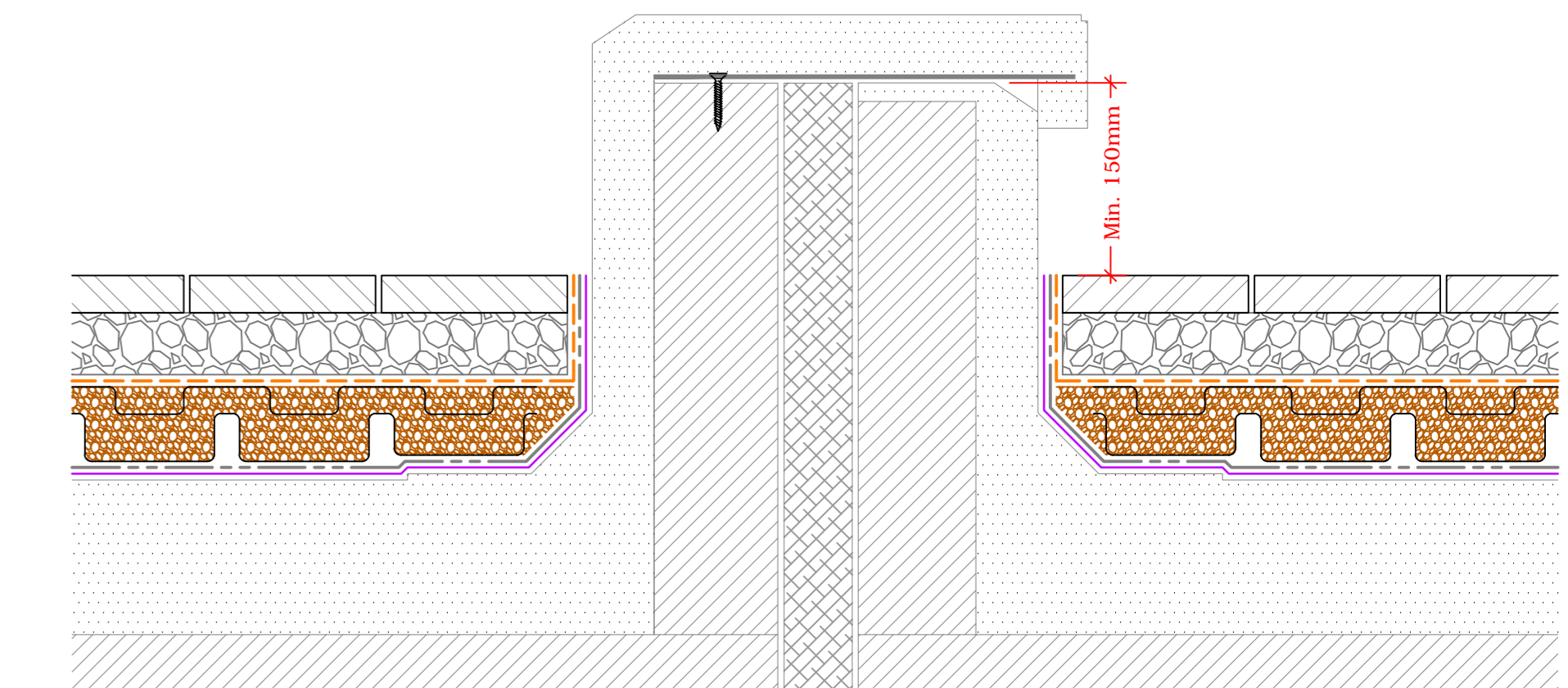
Plan View of Rainwater Outlet Access Cover
NOT TO SCALE



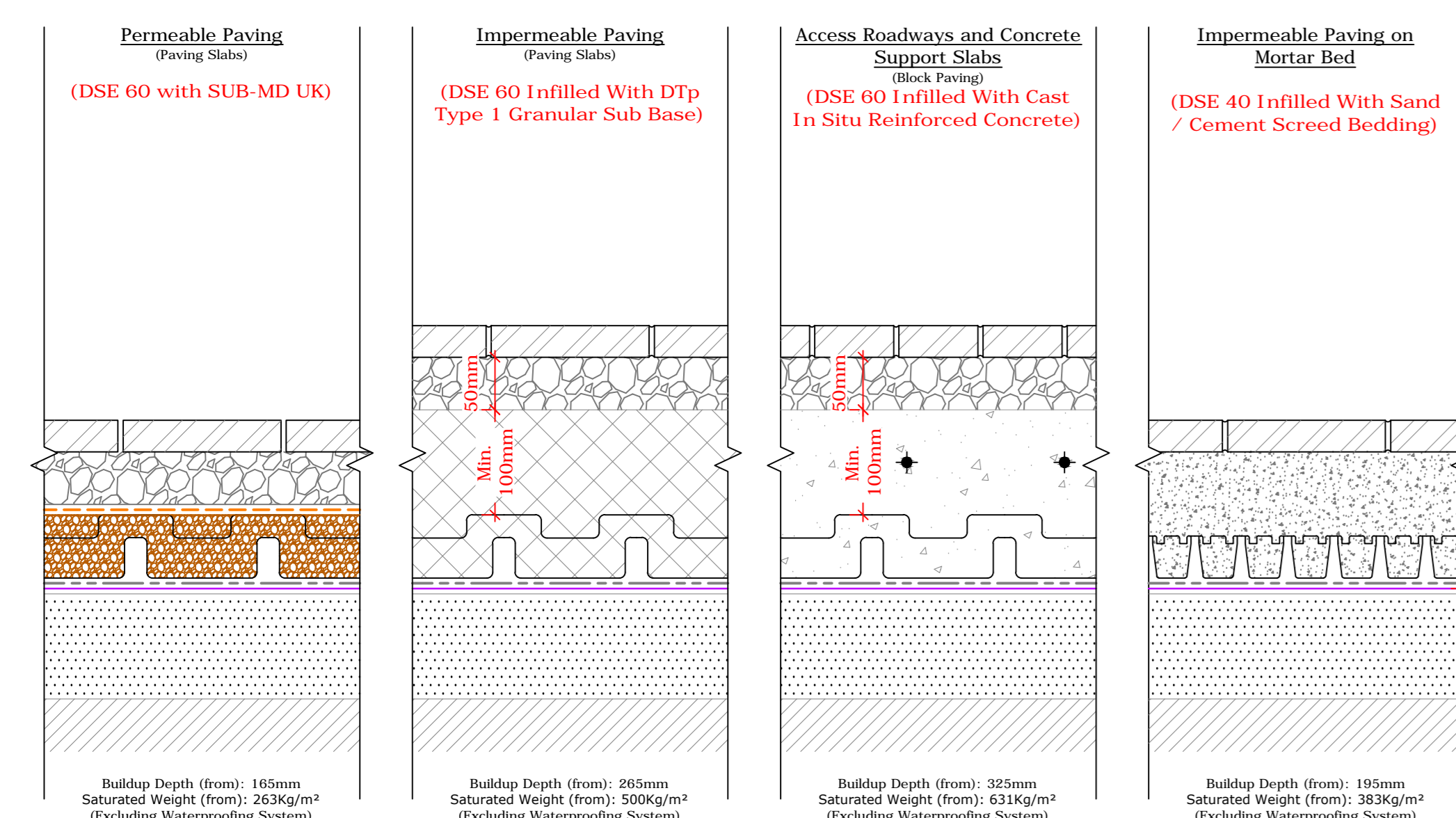
Isometric View of the Lead Chute Detail
(As Seen from the Support NOT TO SCALE)



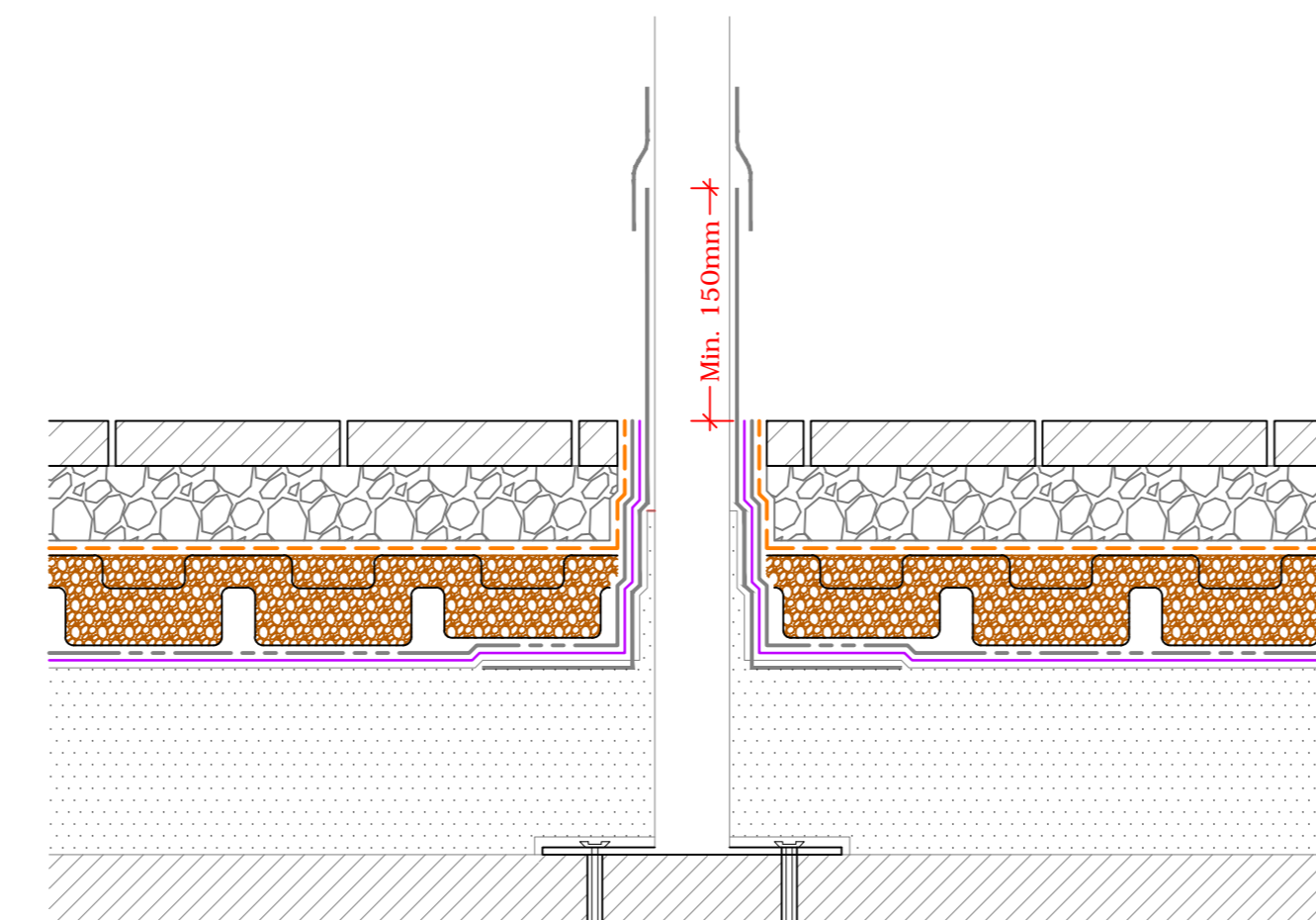
Permeable Paving to Upstand - Lead Chute (Section A-A)
(Drg.No: D0901-00W_206-Int-PP-D6_002)



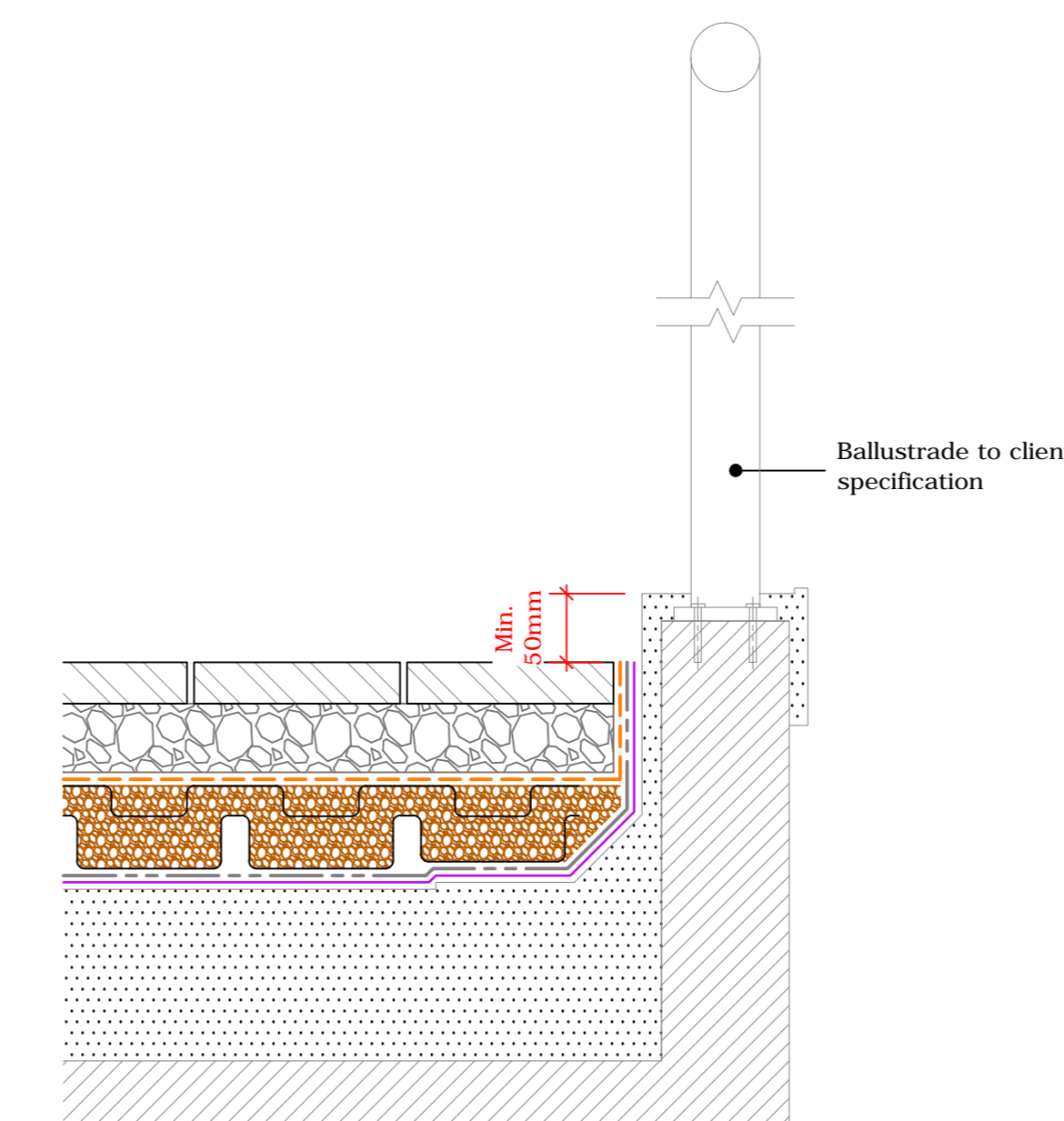
Permeable Paving to Twin Kerb Expansion Joint
(Drg.No: D0901-00W_204-Int-PP-D6_001)



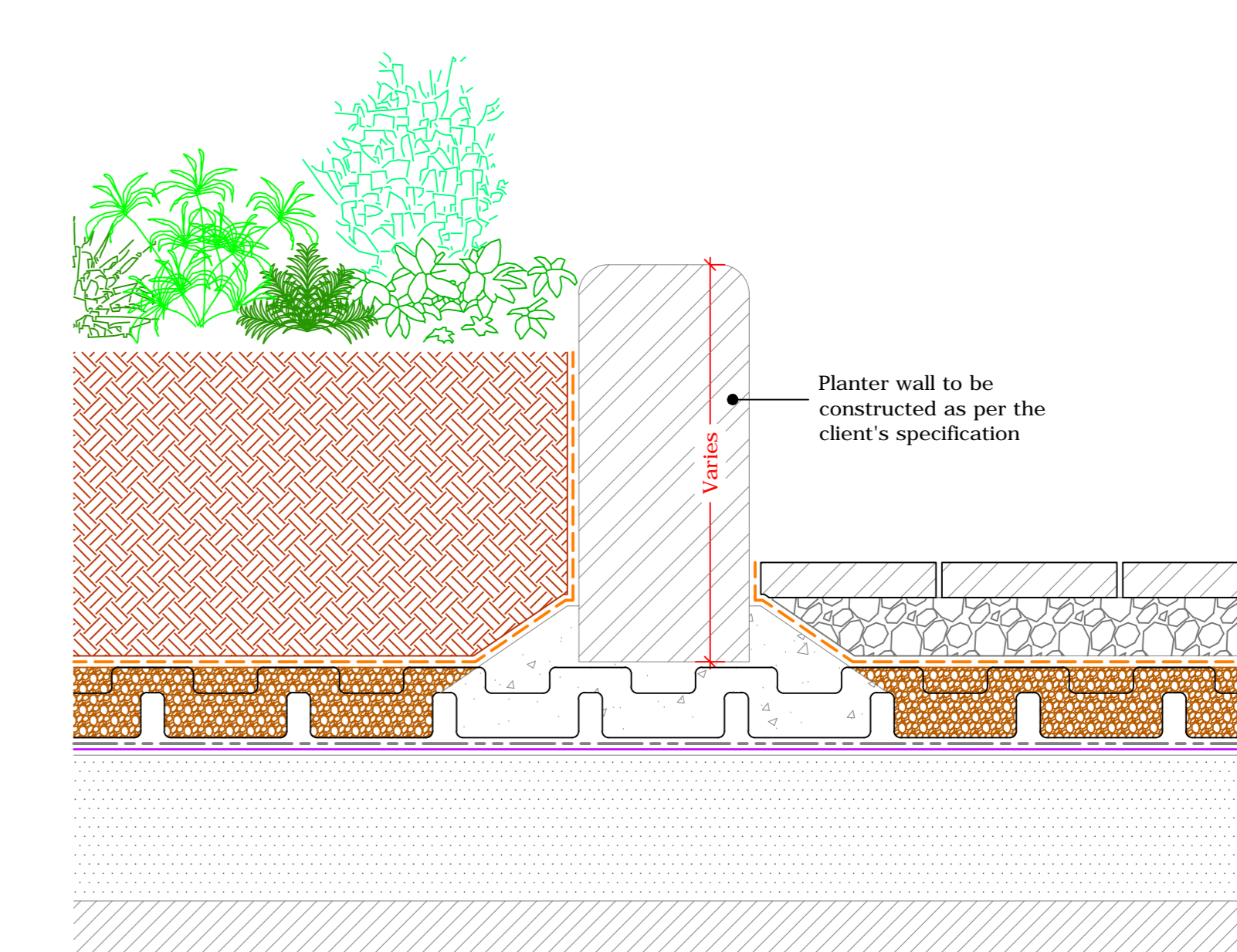
Hard Landscaping Options
(Heights and Weight loadings may vary, allowance must be made for increased landscaping depths)



Permeable Paving to Hand Rail
(Drg.No: D0901-00W_009-Int-PP-D6_002)



Permeable Paving to Perimeter Kerb
(Drg.No: D0901-00W_002-Int-PP-D6_001)



Upstand to Low Planter Wall and Permeable Paving
(Drg.No: D0901-00W_010-Int-PP-D6_005)

Key

- Concrete Slab / Support Kerb
- 2-5mm Crushed Gravel
- FN 125 100 / 200 Fibre Fleece - 1m / 2m Roll
- DSE 60 Drainage Board (Refer To The Specification For The Correct Board To Be Used)
- SUB-MD UK - Mineral Drain
- DTP Type 1 Granular Sub Base (Compacted Aggregate)
- GEM 6 Rubber Protection Mat
- PE 02 Separation And Slip Layer - Not Required On Single-Ply Systems
- Bauder Waterproofing System
- Deck / Substrate

Important note:
This drawing shows alternative options. For the correct solution to be used, refer to the project specific specification.

IMPORTANT NOTES:
1. This detail is suitable for the following Bauder Systems: Bauder Total Roof System, Bauder Total Green Roof System (Bauderflex, Bauderflex Green, Antex)
2. This Drawing Shows Alternative Options. For the Correct Solution to be Used, Refer to the Project Specific Specification.
3. Do not scale to ascertain dimensions.
4. All dimensions to be checked and verified on site prior to commencement of work.
5. This drawing is to be read in conjunction with the specification and associated drawings.
6. This detail is a guideline only, representing typical detailing conditions and illustrate the correct application of the above Bauder System. It may be necessary to modify this detail to suit specific project design constraints or conditions.
7. Refer to the Bauder Specification for the product description and method of application. For clarity the method of attachment has not been shown.
8. Provision should be made by the installer for mechanically fixing the top

BAUDER

UK OFFICE: Bauder Limited, 70 Ludlow Road, Ipswich, Suffolk, IP1 0DB, UK. Tel: +44 (0)1473 257671. Fax: +44 (0)1473 257671. Email: technical@bauder.co.uk

IRELAND OFFICE: Bauder Limited, O'Duffy Centre, Cross Lane, Carrigrohane, Co. Wexford, Ireland. Tel: +353 (0)42 8602 333. Fax: +353 (0)42 8602 870. Email: technical@bauder.ie

Hard Landscaping - Paving

Scale:	Drawing Number:	Rev:
1:5	D0903-00W_000-Int-HL-D6_001	
Rev:		
CD	DW	UK
		14.12.22