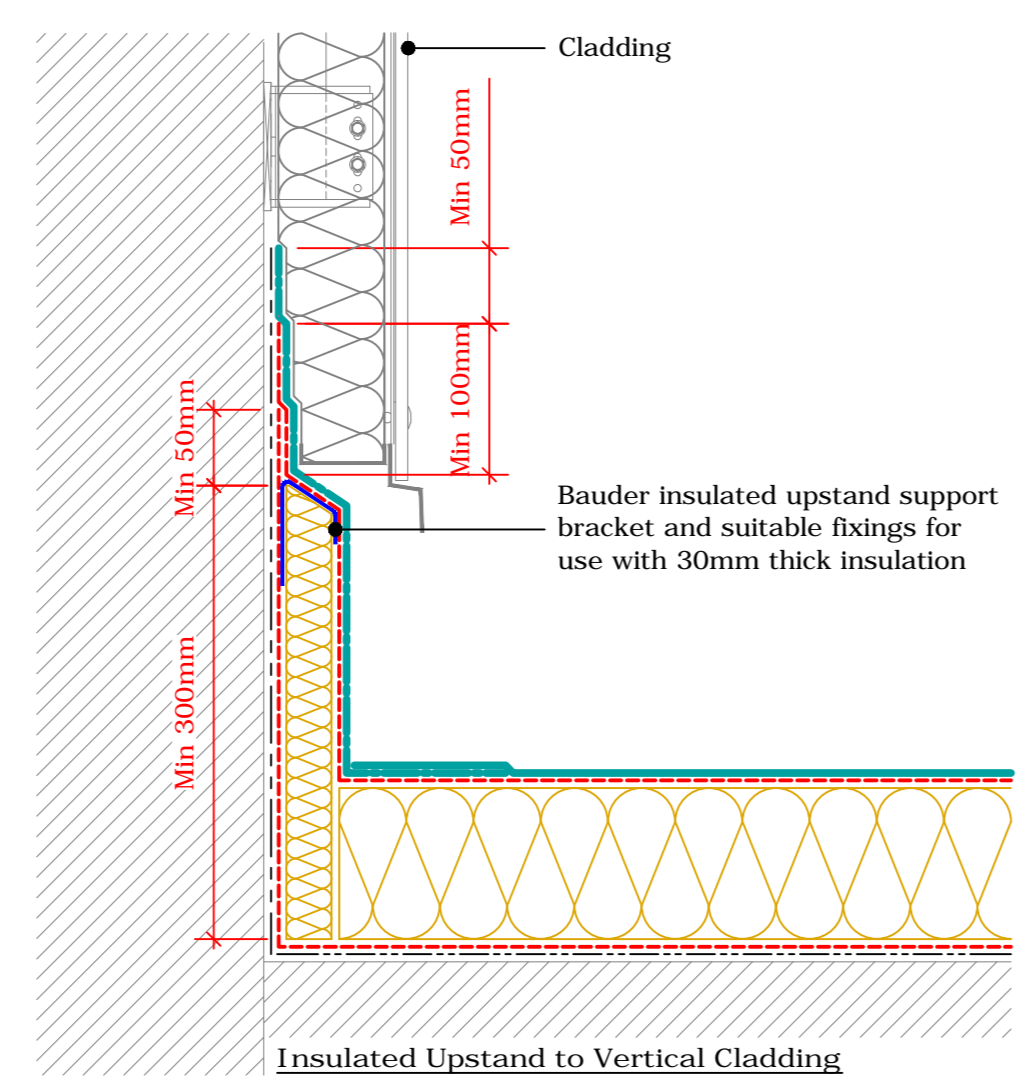
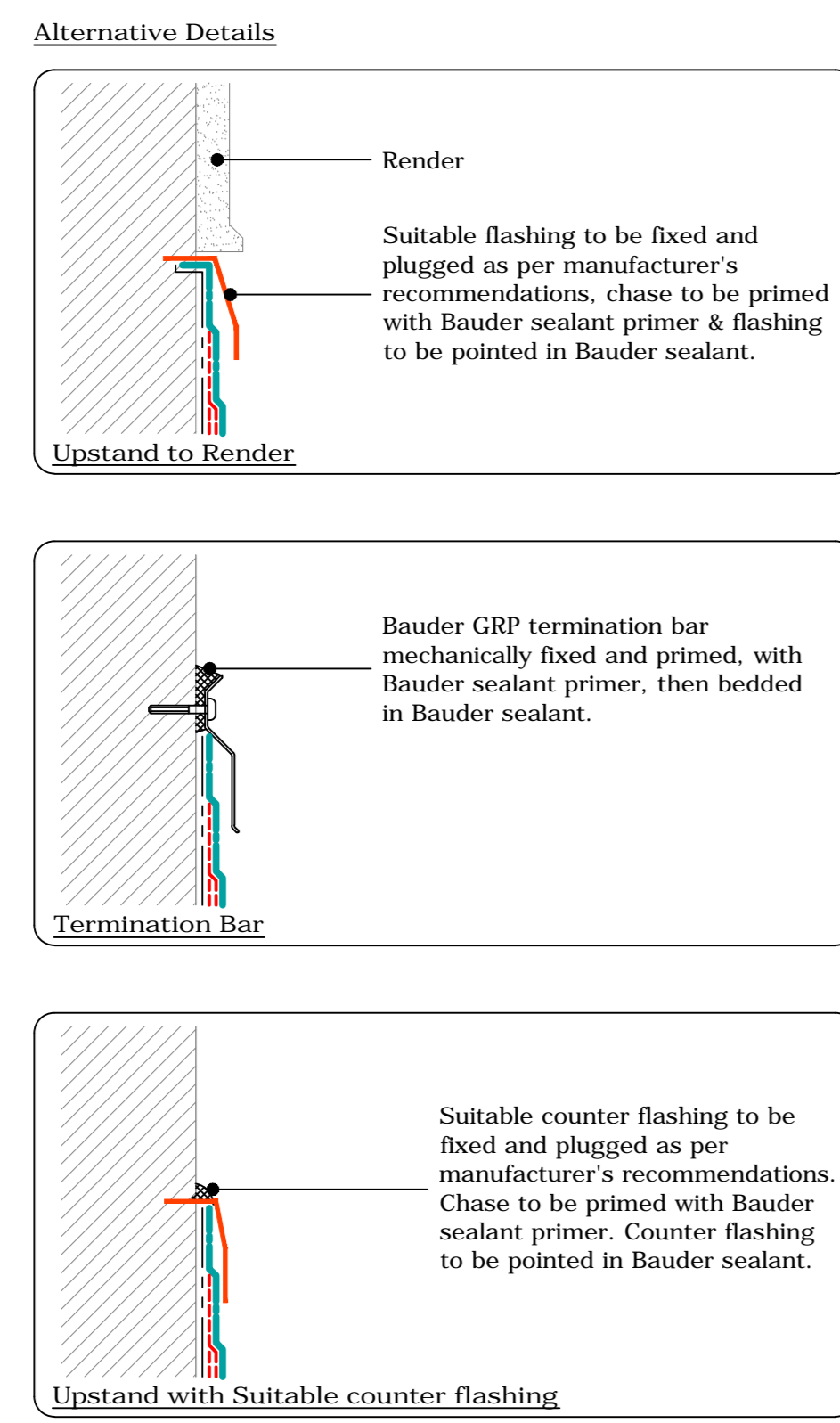
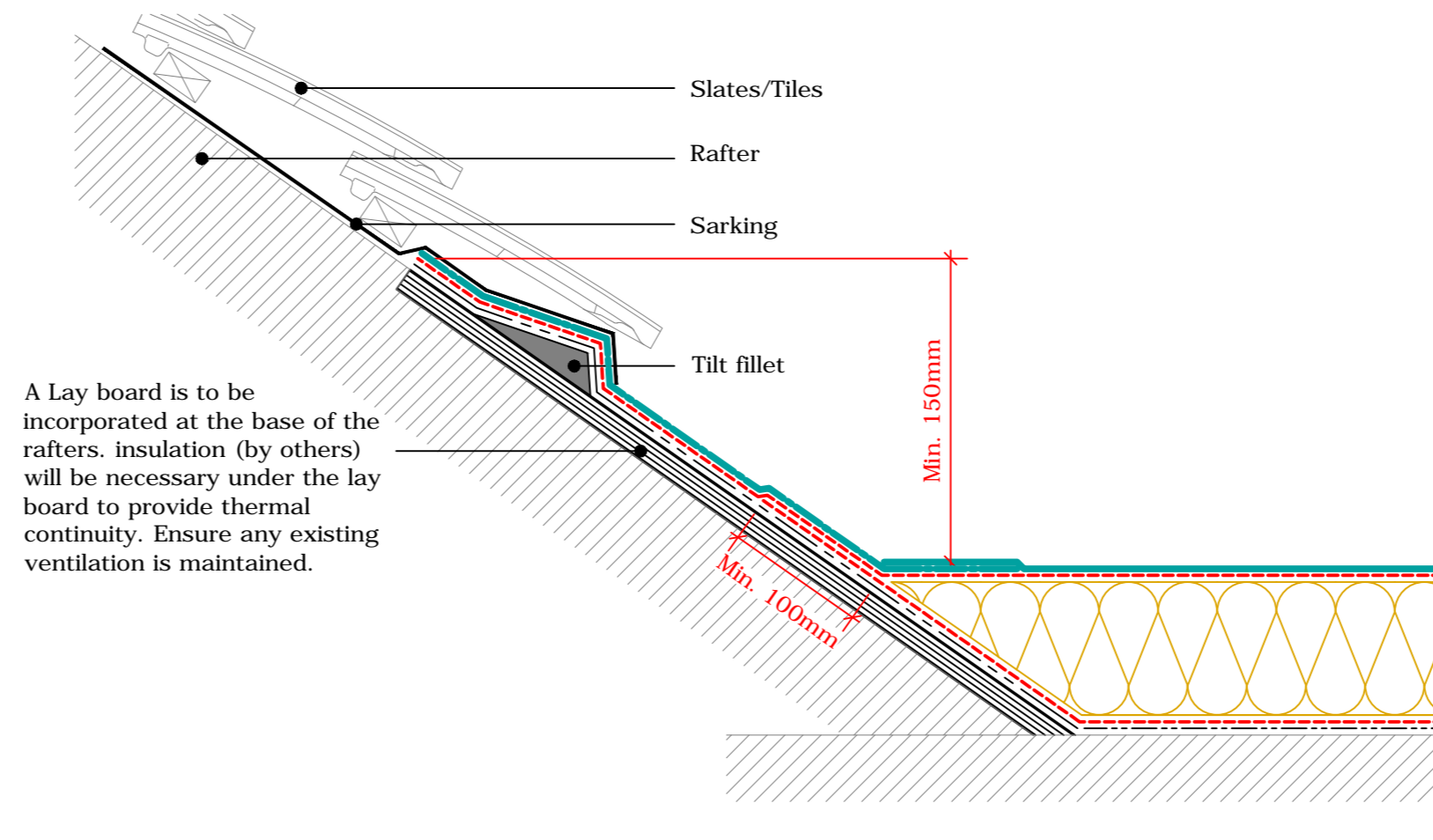
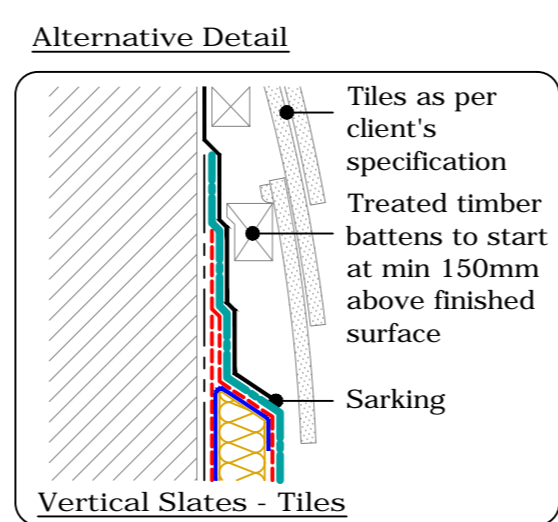


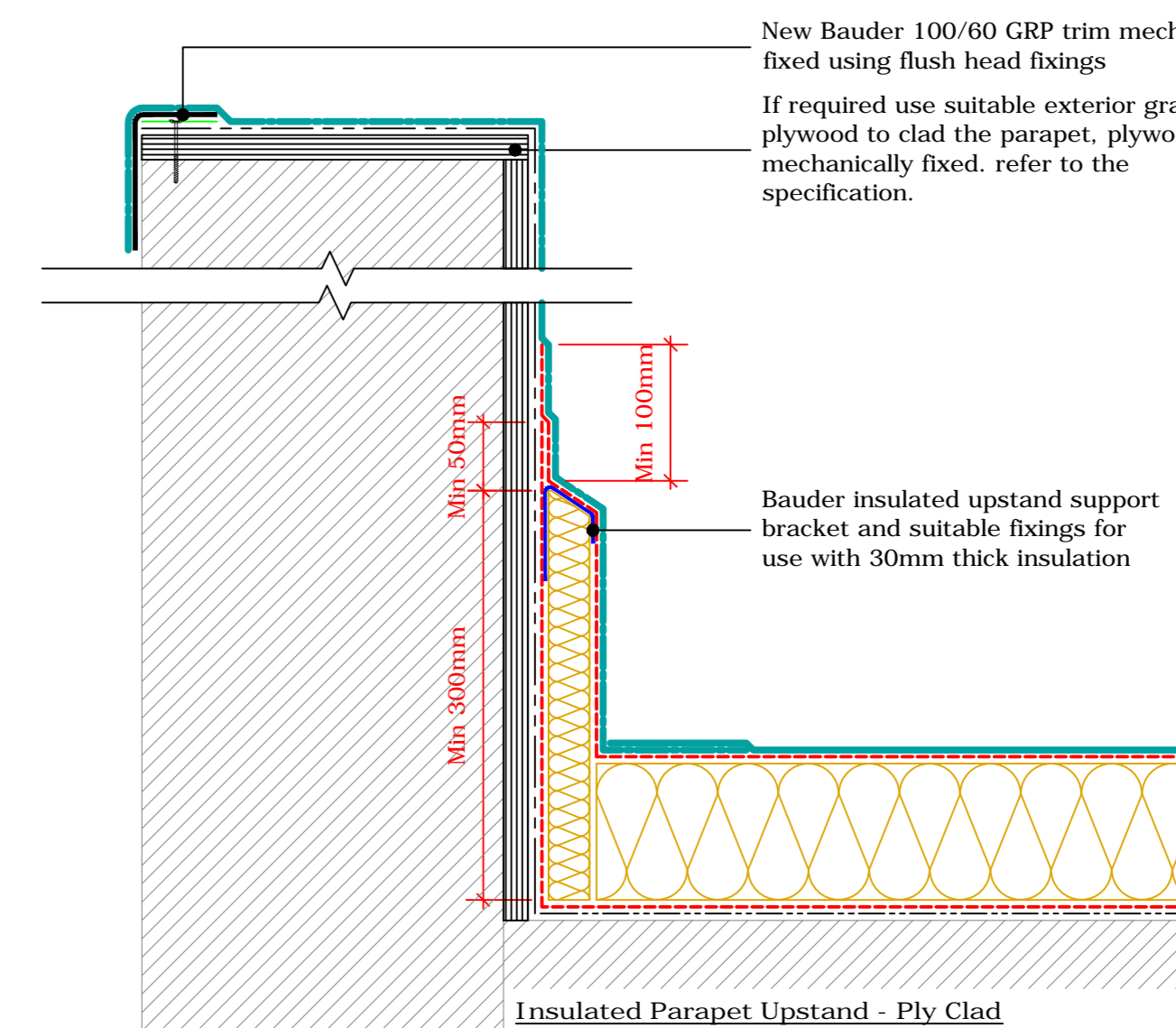
Upstand
(Drg.No: D0805-00W_201-001)



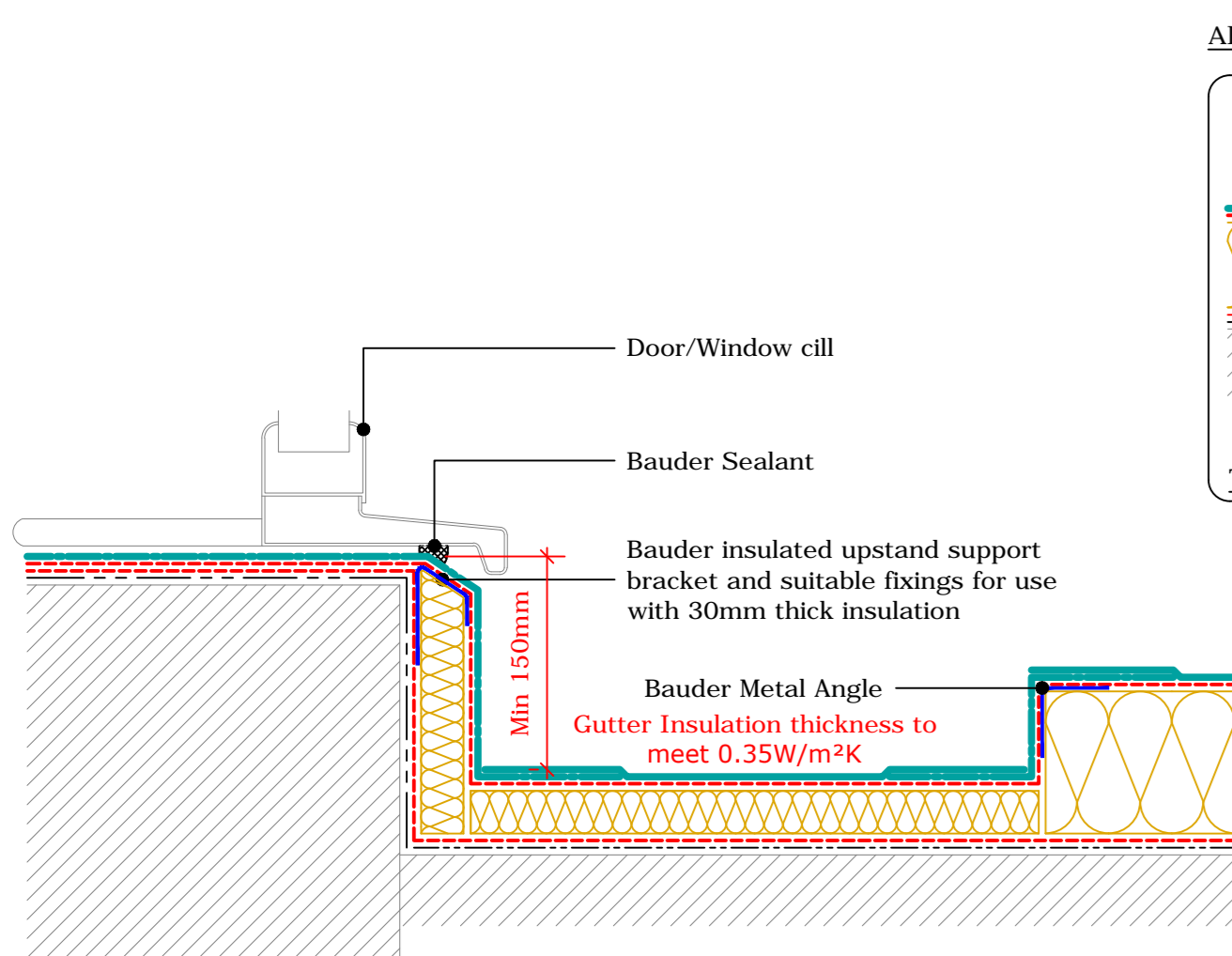
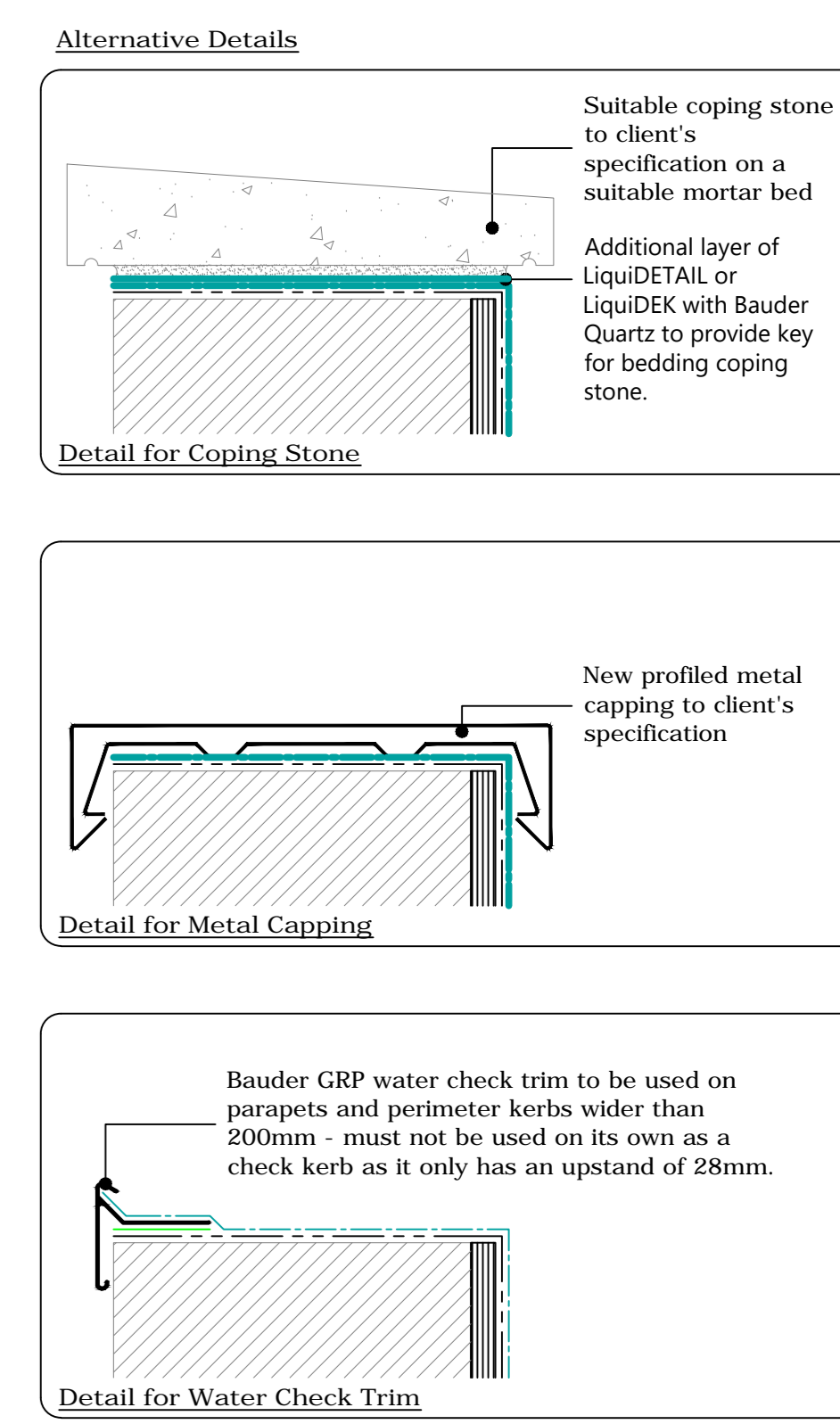
Upstand to Vertical Cladding or Slates/Tiles
(Drg.No: D0805-00W_201-002)



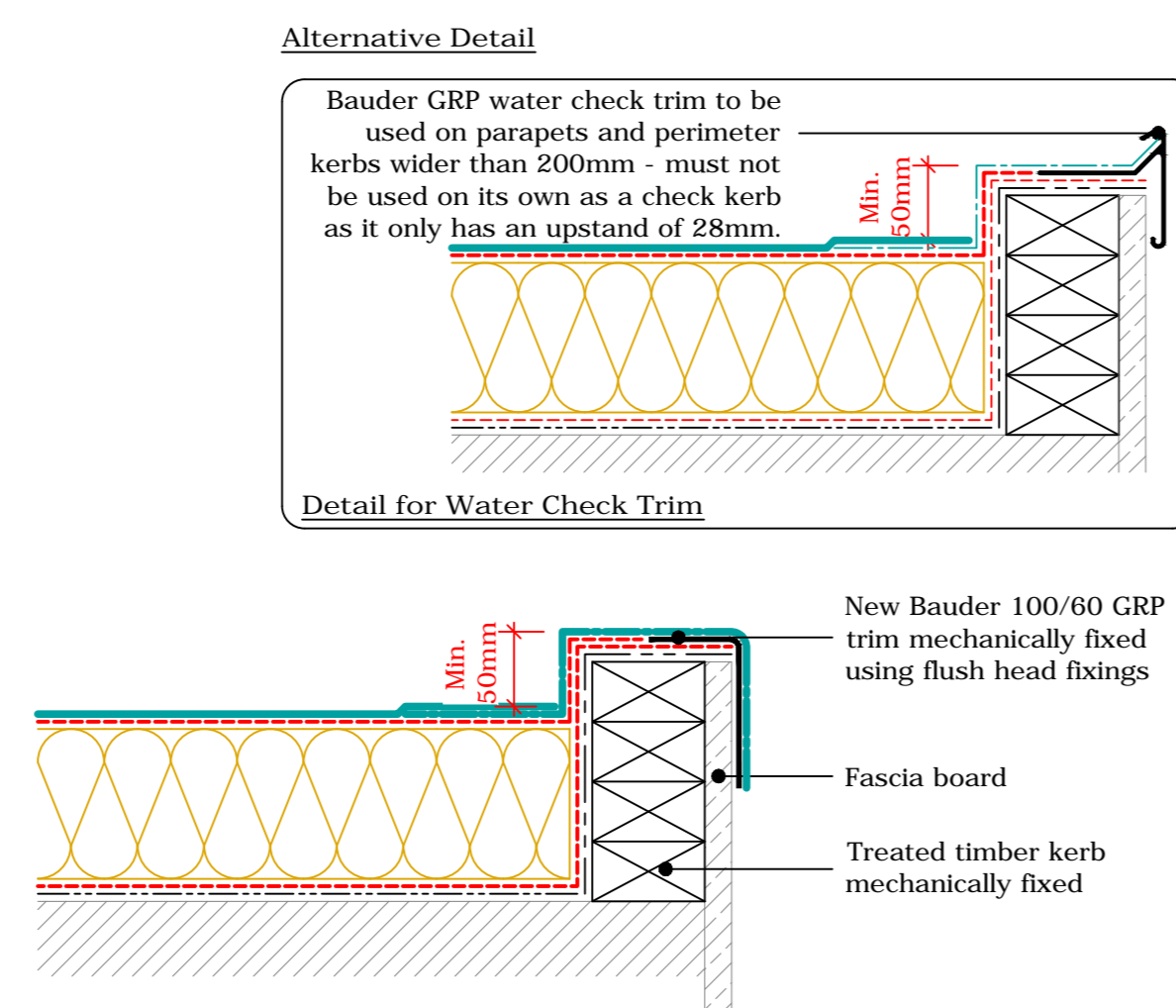
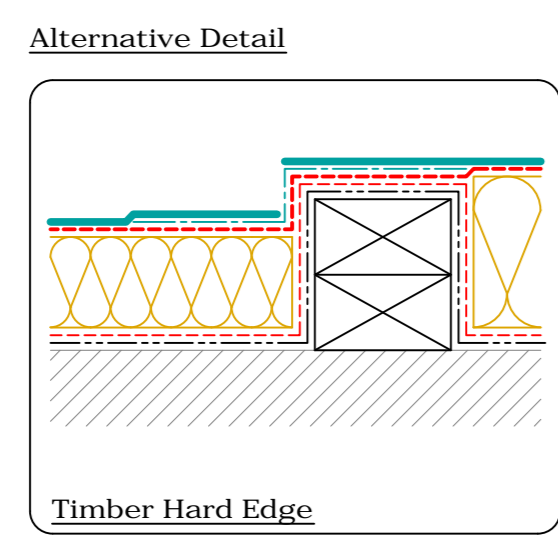
Upstand to Pitched Roof
(Drg.No: D0805-00W_001-004)



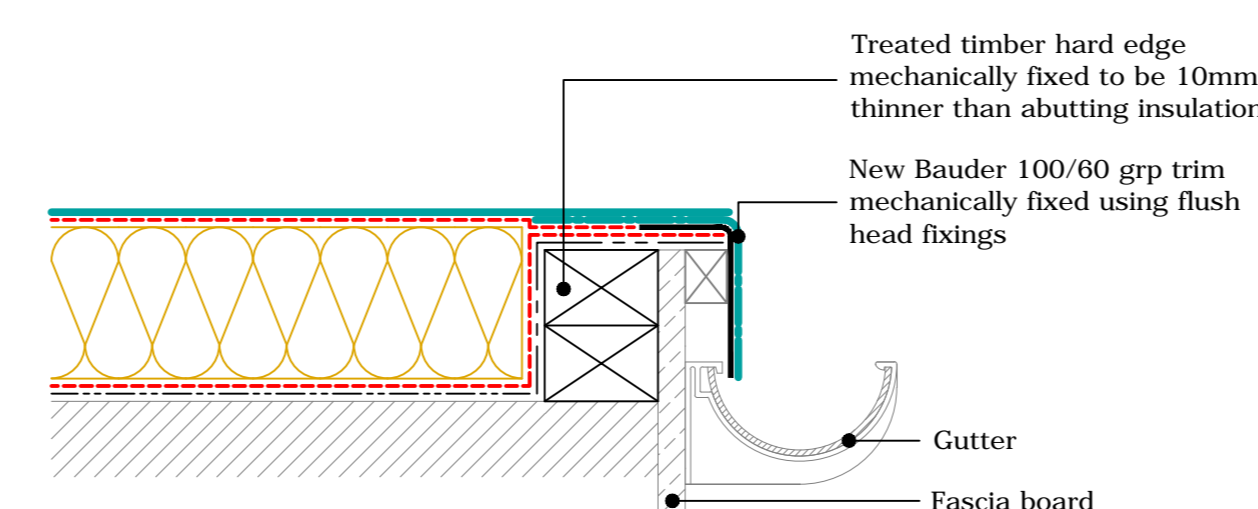
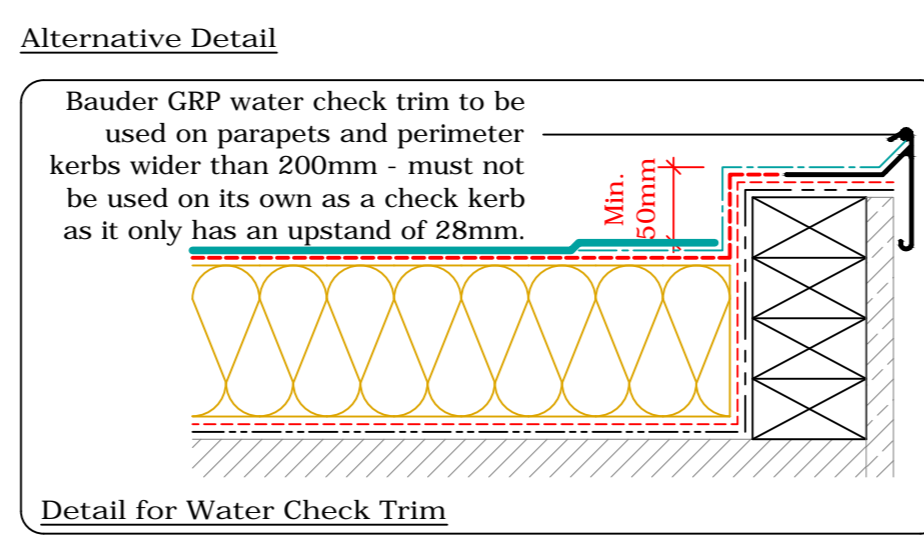
Parapet Upstand
(Drg.No: D0805-00W_203-001)



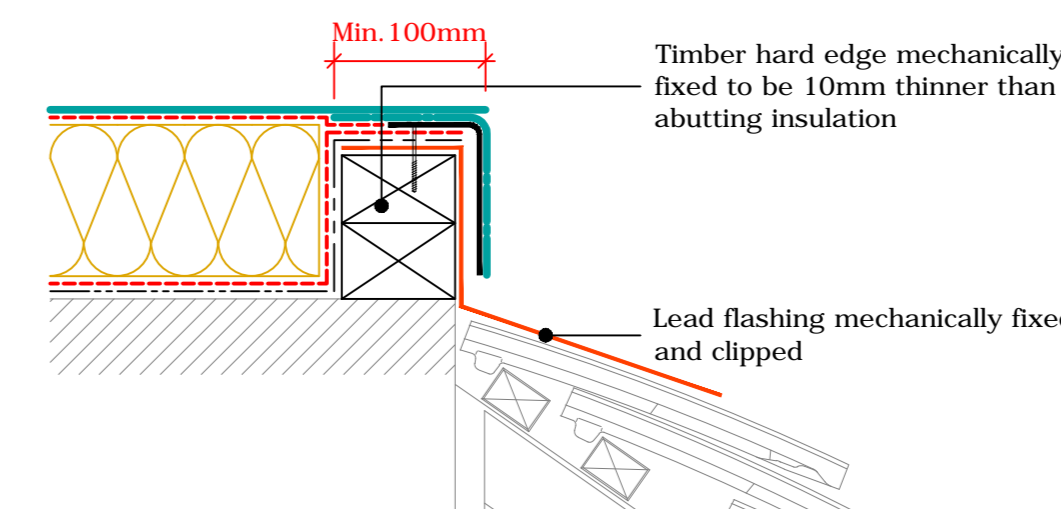
Internal Gutter to Clerestory Window
(Drg.No: D0805-00W_006-004)



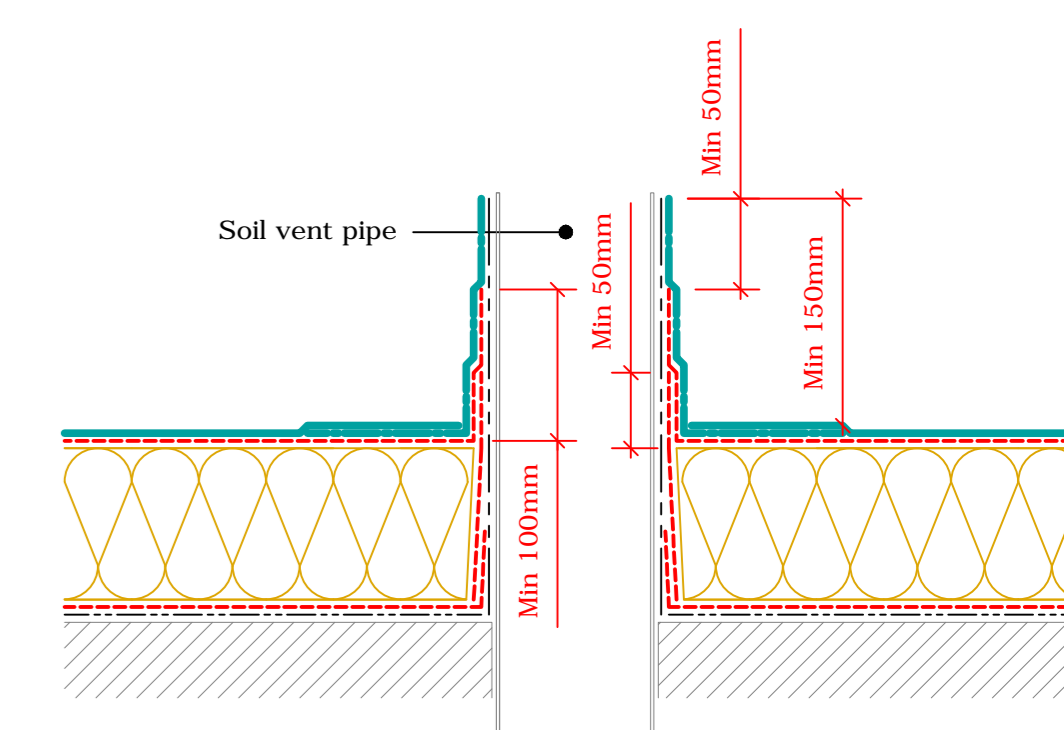
Perimeter Kerb
(Drg.No: D0805-00W_002-001)



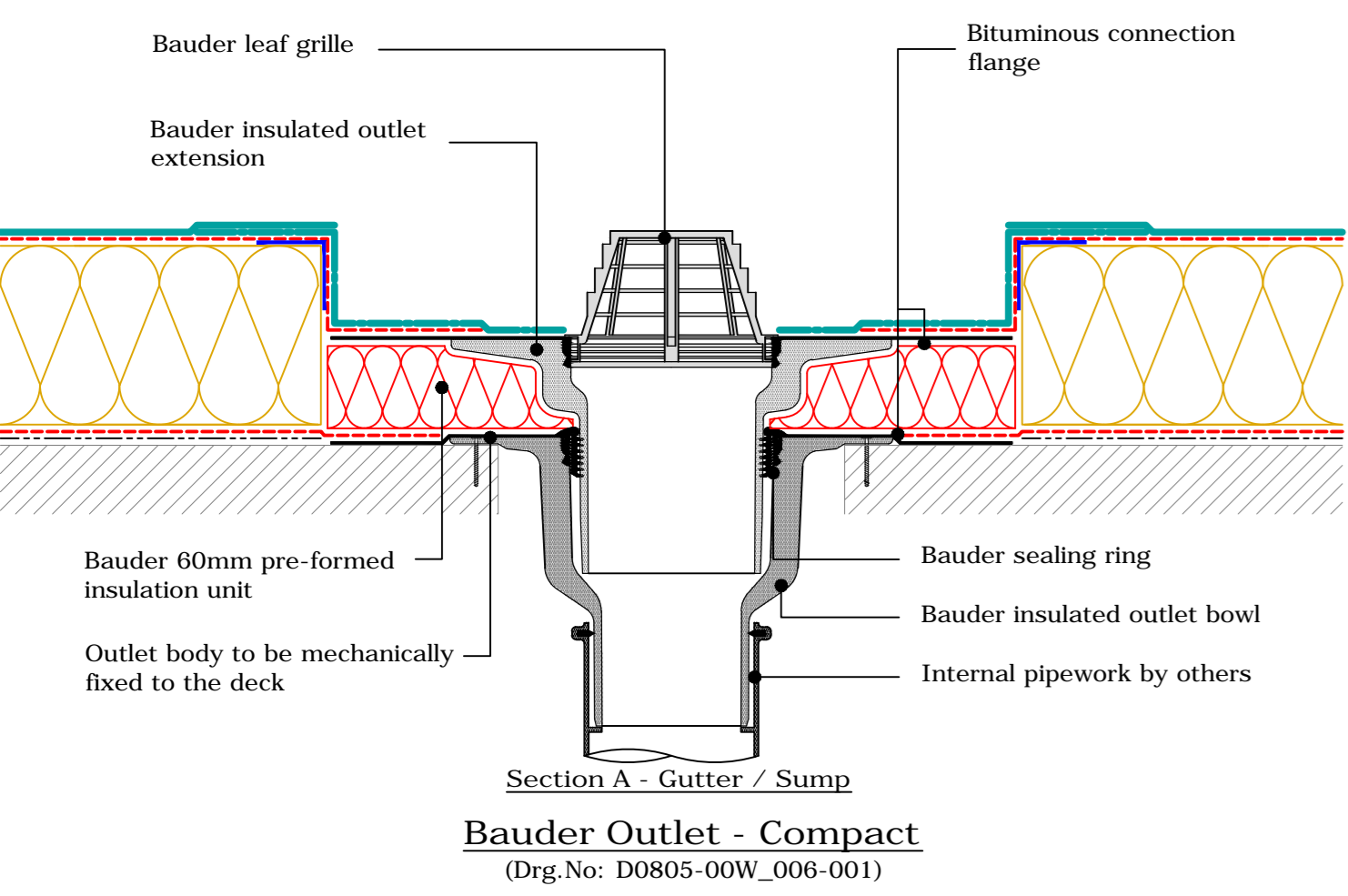
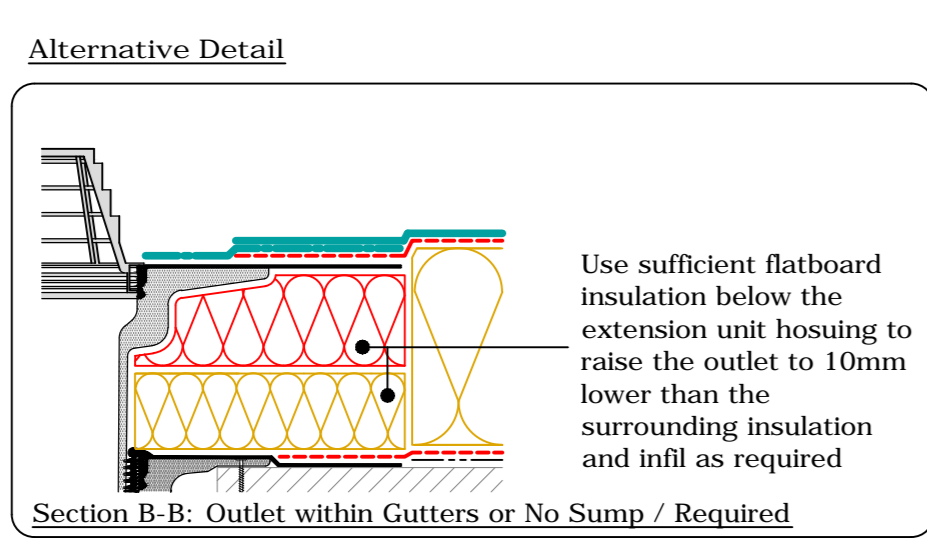
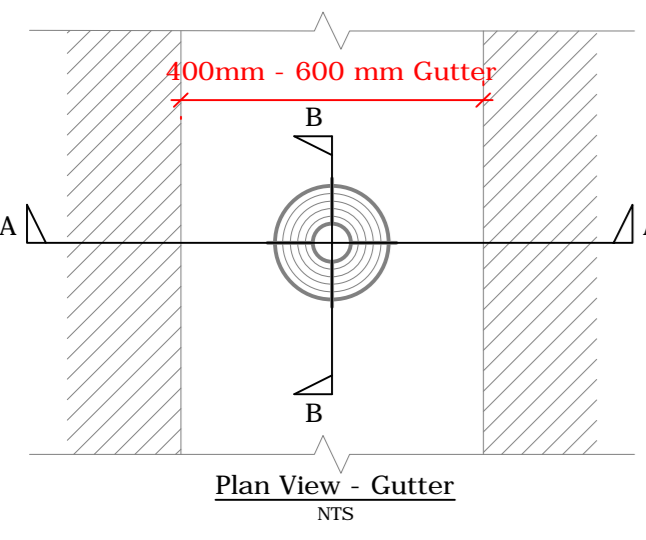
External Gutter
(Drg.No: D0805-00W_006-005)



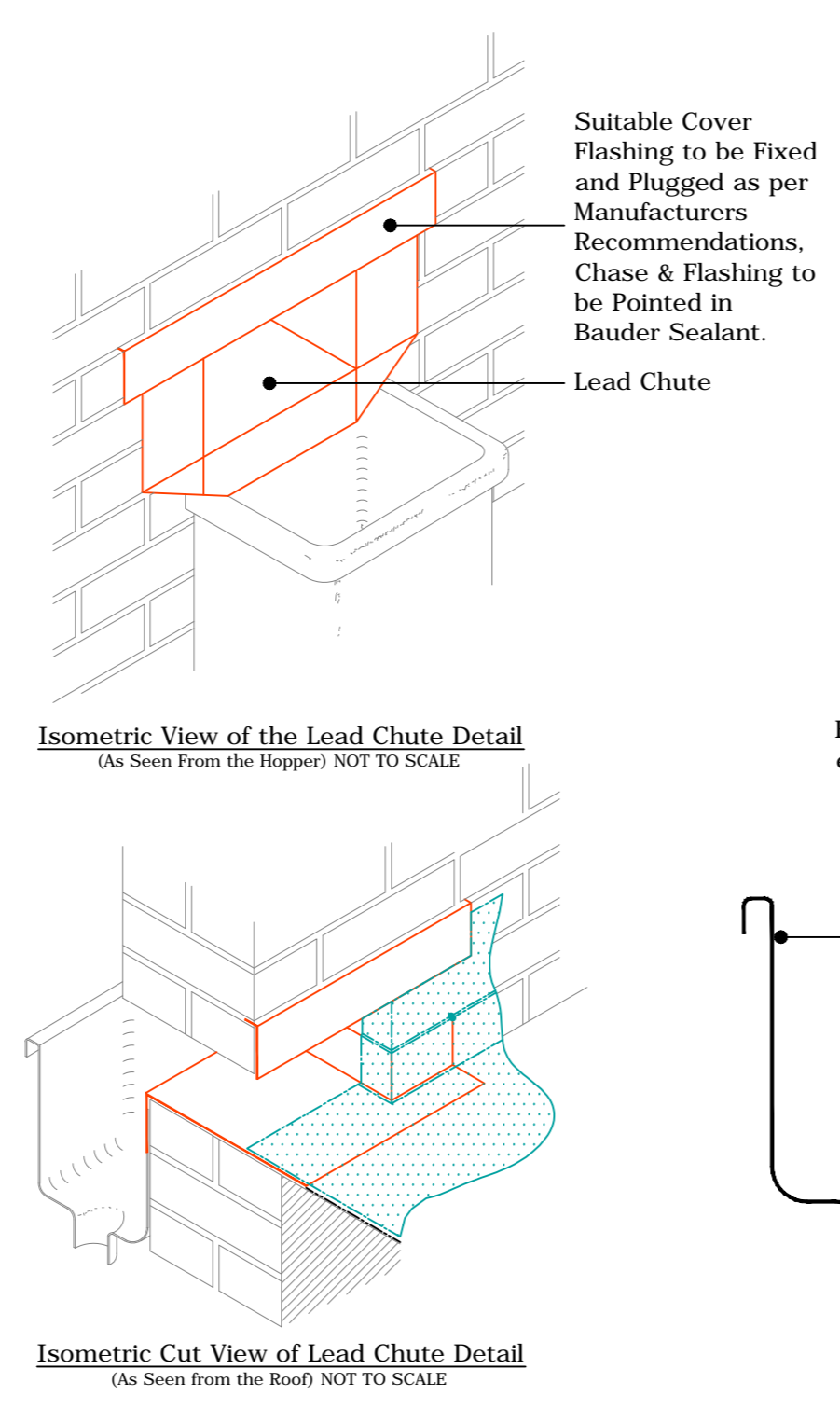
Mansard Roof
(Drg.No: D0805-00W_006-007)



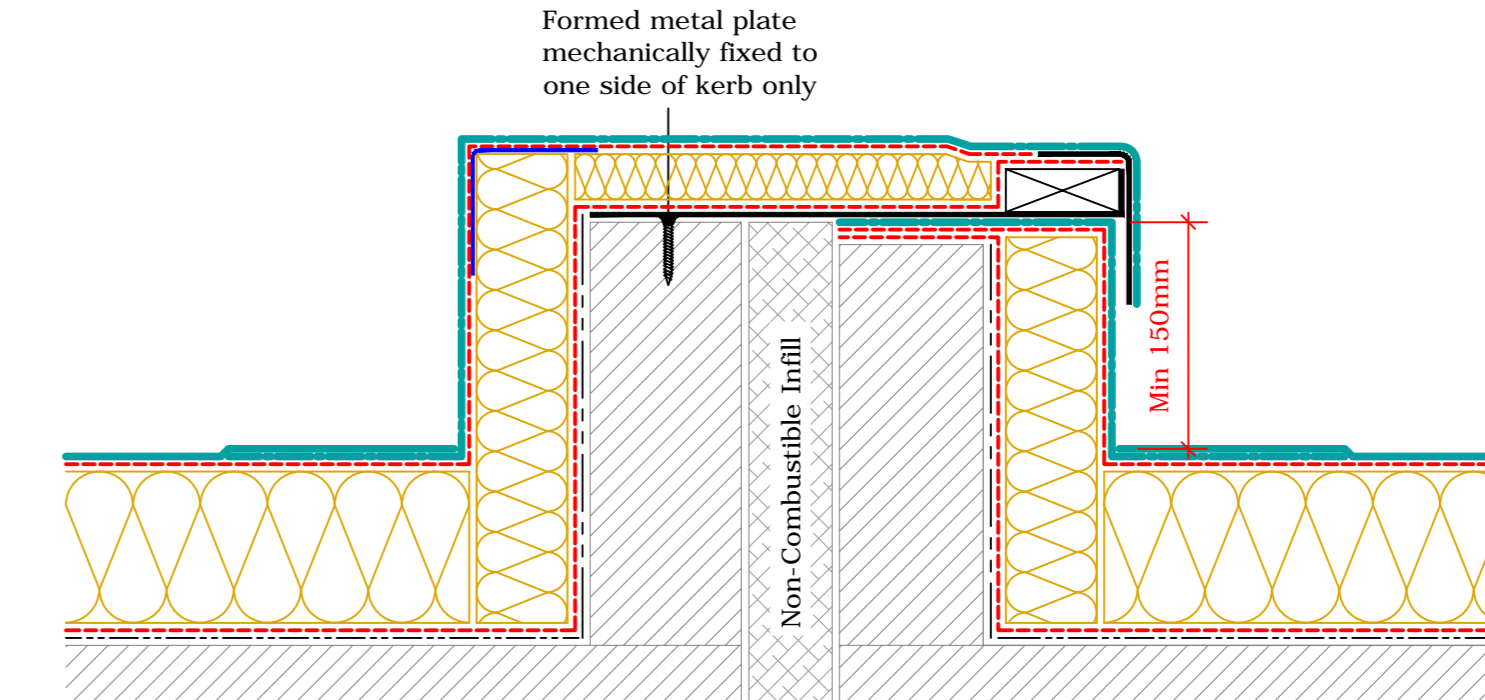
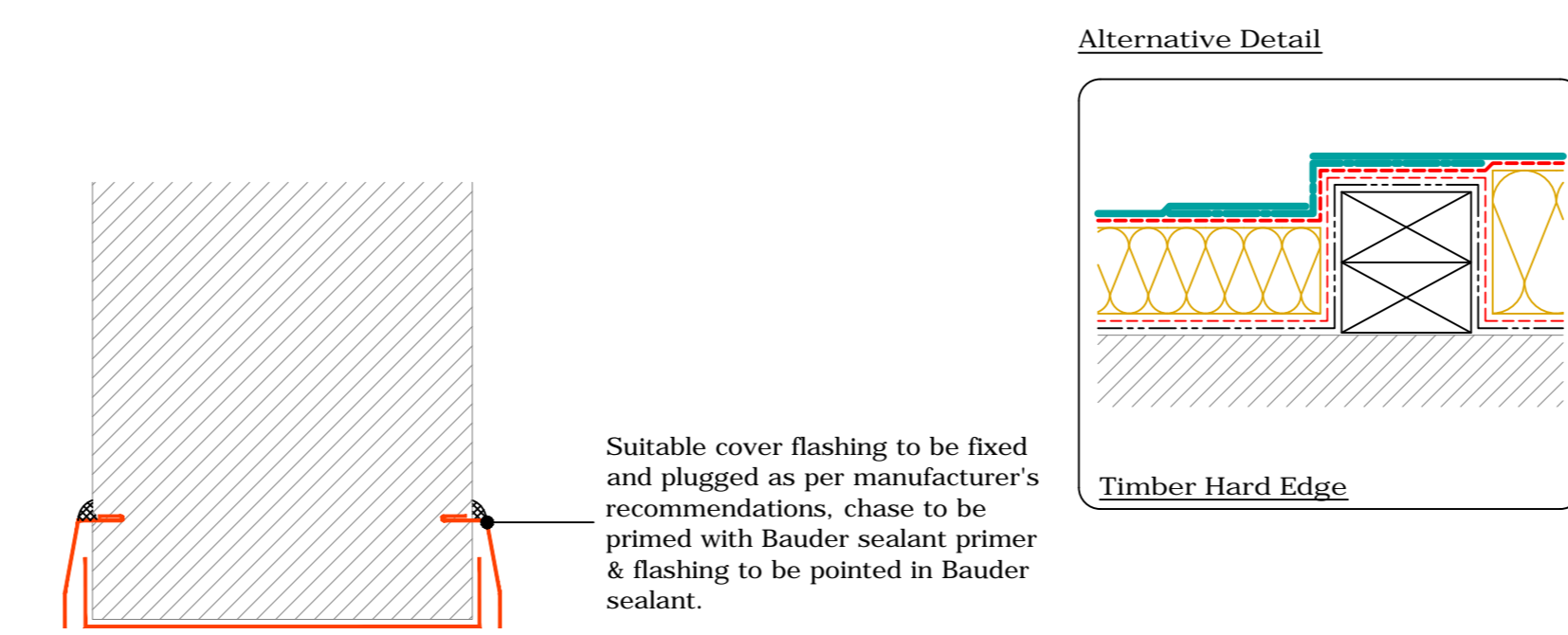
Soil Vent Pipe
(Drg.No: D0805-00W_007-001)



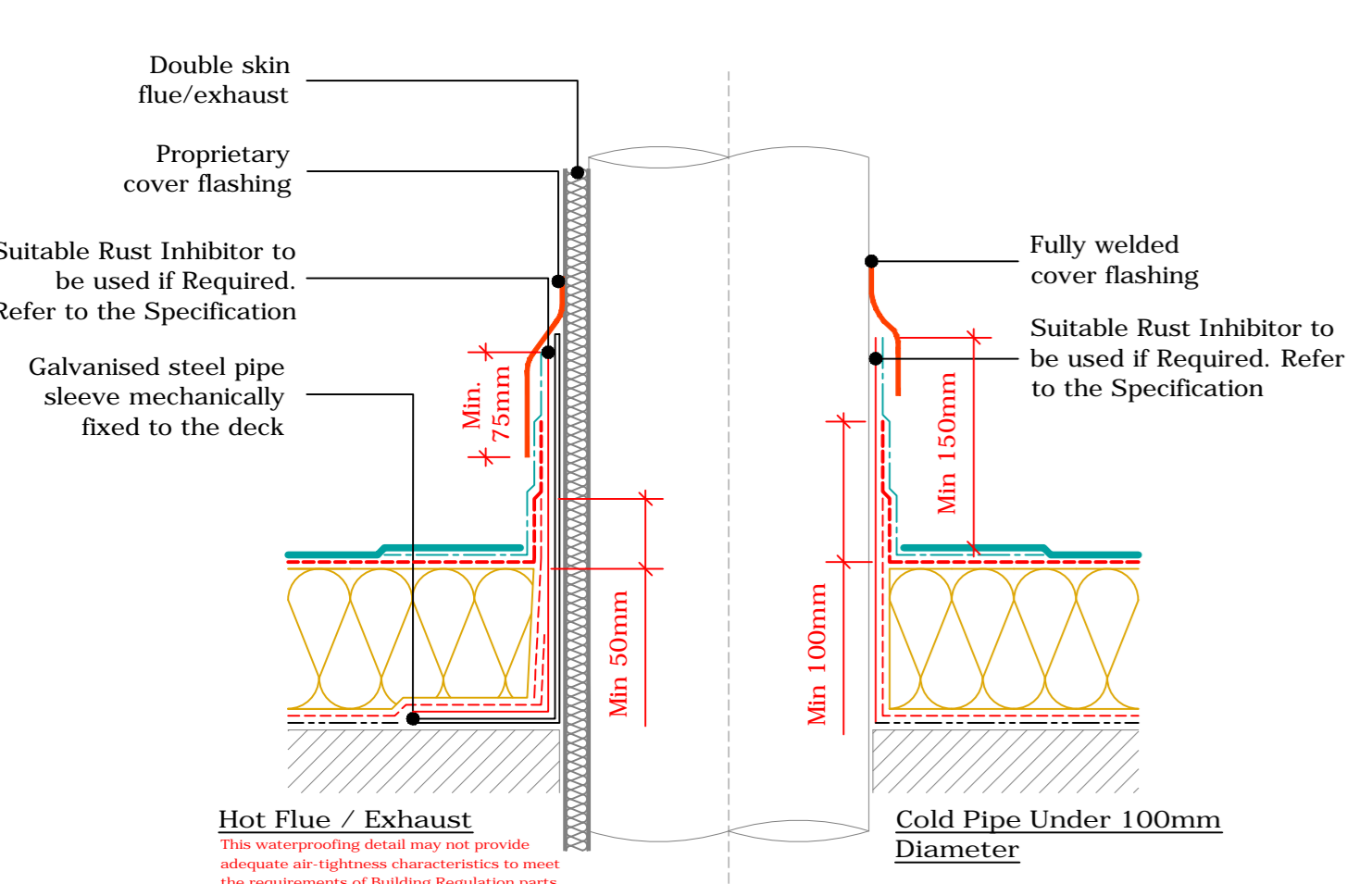
Bauder Outlet - Compact
(Drg.No: D0805-00W_006-001)



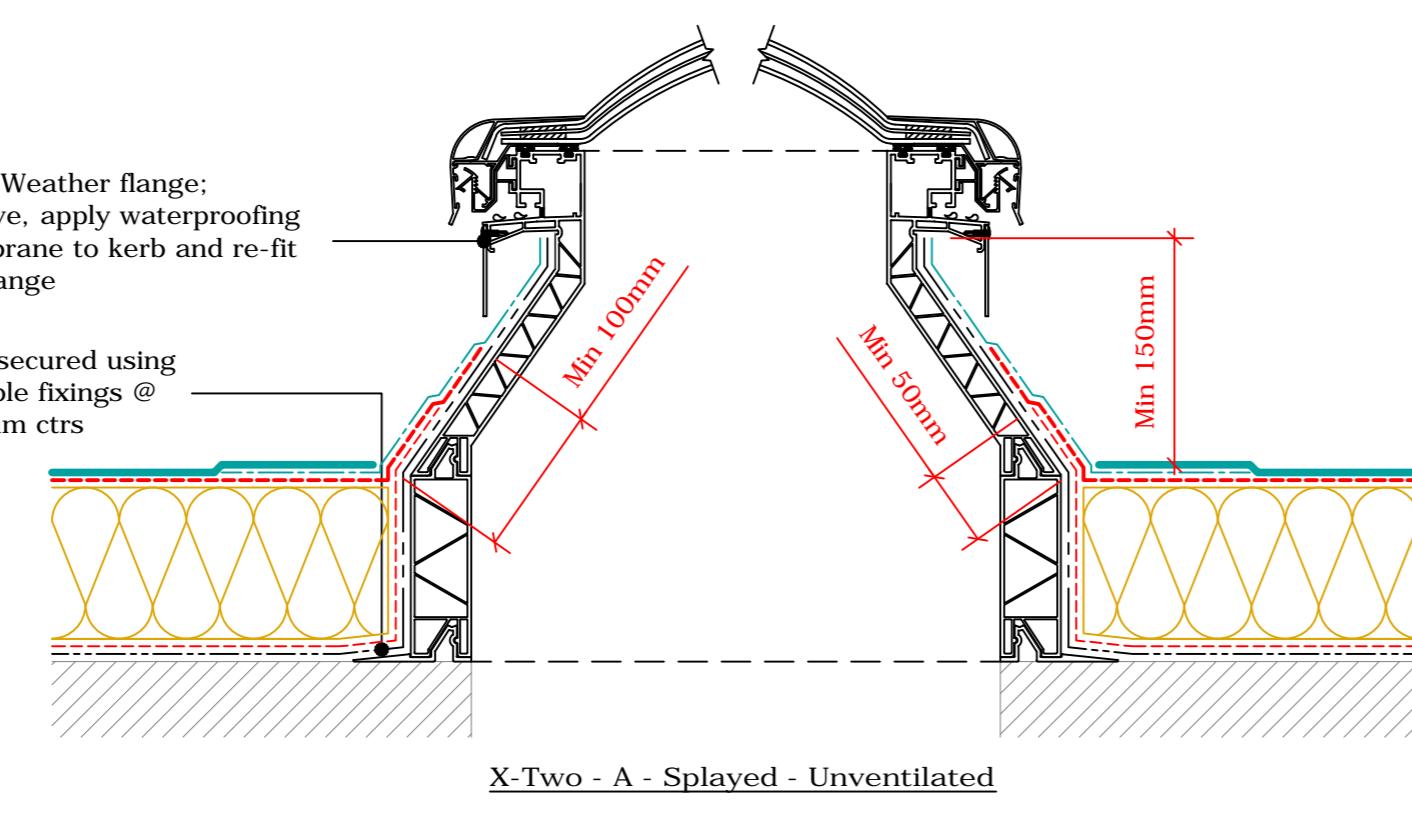
Upstand - Lead Chute
(Drg.No: D0805-00W_206-002)



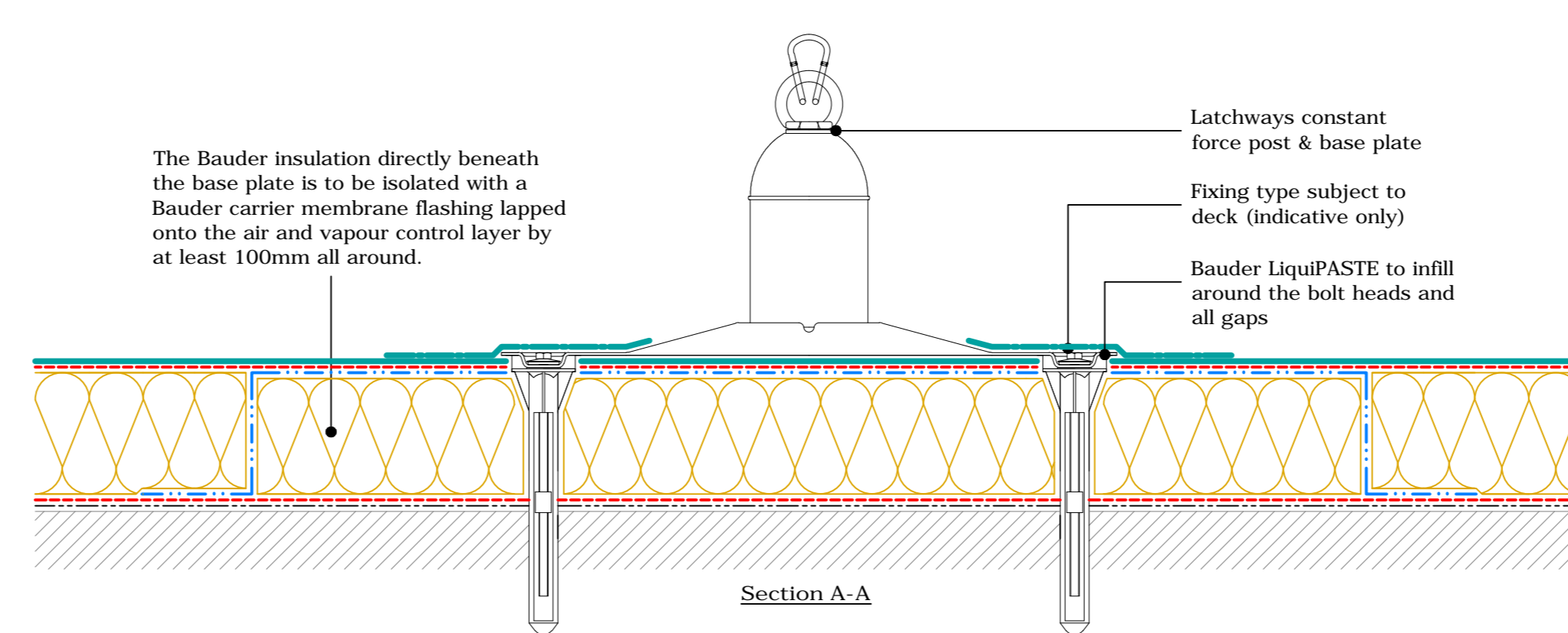
Twin Kerb Expansion Joint
(Drg.No: D0805-00W_204-004)



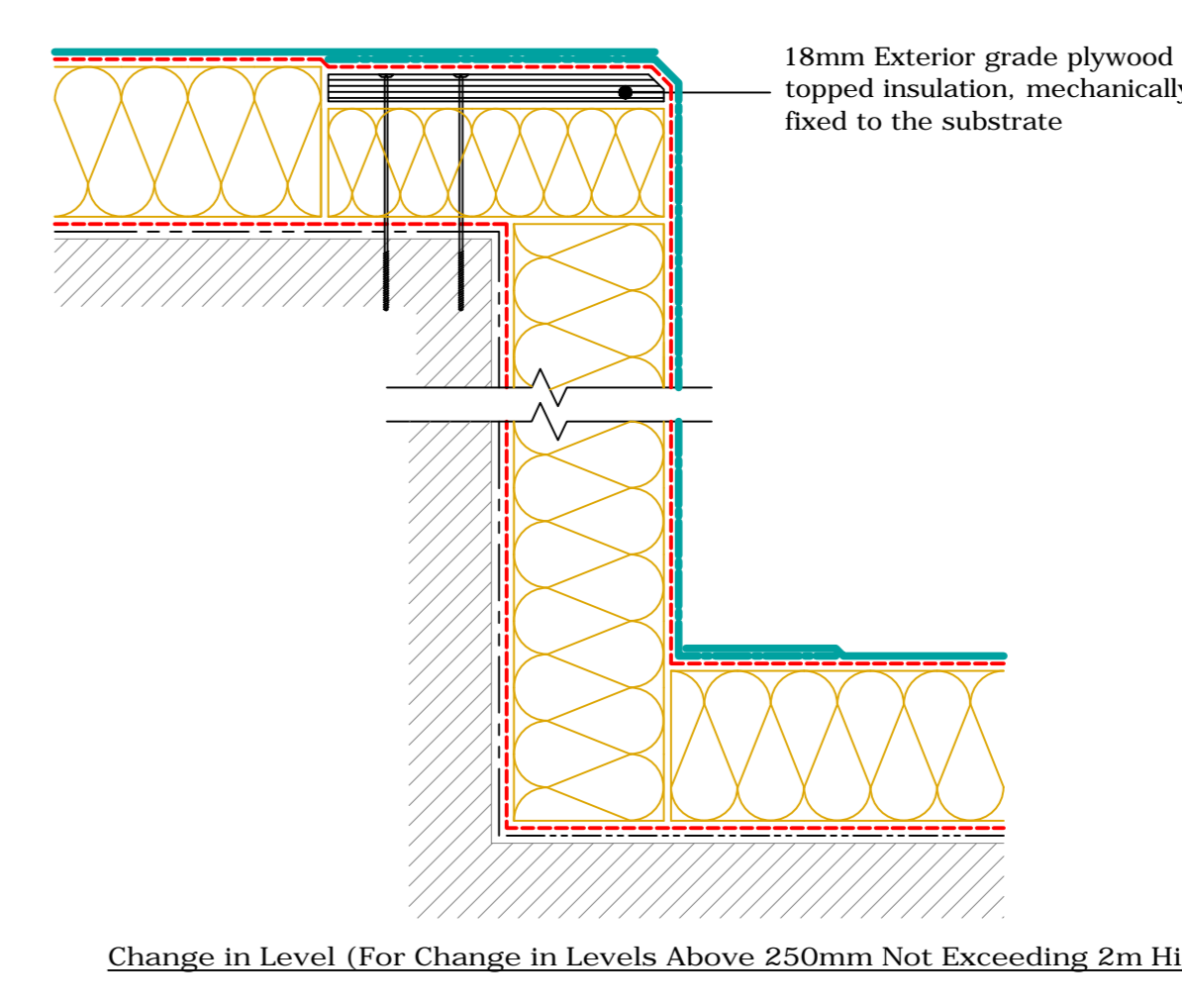
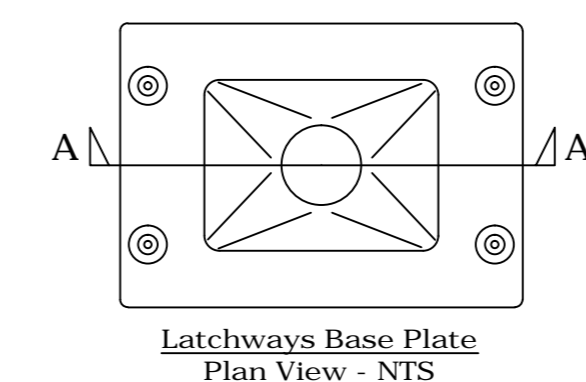
Upstand to Hot Flue OR Cold Pipe
(Drg.No: D0805-00W_007-002)



Upstand to Bauder Rooflight - Euroglaze
(Drg.No: D0805-00W_008-001)



Latchways Constant Force Post
(Drg.No: D0805-00W_209-001)



Change In Levels (Warm Roof)
(Drg.No: D0805-00W_210-001)

Key

- Bauder LiquidTEK (Incorporating 11kg Reinforcement Fibres)
- Bauder LiquidDETAIL (Incorporating 11kg Reinforcement Fibres)
- Bauder Air And Vapour Control Layer Or Carrier Membrane
- Bauder LIQUIPASTE (In Latchways Only)
- Bauder SA Primer (In Main Field Area Only)
- Bauder Insulation
- Bauder 100/60 GRP Trim
- Treated Timber
- Bauder insulated upstand support bracket
- Bauder Metal Angle
- Deck / Substrate

IMPORTANT NOTES:

- This detail is suitable for the following Bauder Systems: Bauder LIQUITEK Roof System - Warm Roof
- This detail shows alternative options for the Correct Solution to be used. Refer to the Project Specific Specification.
- Do not make to alter dimensions.
- All dimensions to be checked and verified on site prior to commencement of work.
- This drawing is to be read in conjunction with the specification and associated drawings.
- This detail is a guideline only, representing typical detailing conditions and illustrate the correct application of the above Bauder System. It may be necessary to modify this detail to suit specific project design constraints and conditions.
- Refer to the Bauder Specification for the product description and method of application. For clarity the method of attachment has not been shown.
- Provision should be made by the installer for mechanically fixing the top leading edge of all upstand details in excess of 250mm in height using appropriate fasteners.

BAUDER

UK OFFICE: Bauder Limited, 70 Lonsdale Road, Ipswich, Suffolk, IP1 0DL, England, UK. Tel: +44 (0)1473 257671 Fax: +44 (0)1473 257671 Email: technical@bauder.co.uk

IRELAND OFFICE: Bauder Limited, O'Duffy Centre, Cross Lane, Castlebar, Co. Mayo, Ireland. Tel: +353 (0)42 8662 333 Fax: +353 (0)42 8662 870 Email: technical@bauder.ie

LIQUITEK ROOF SYSTEM (Warm Roof)

Scale: 1:5
Dwg No: D0805-00W_200_001
Rev: 1
Date: 28.10.21