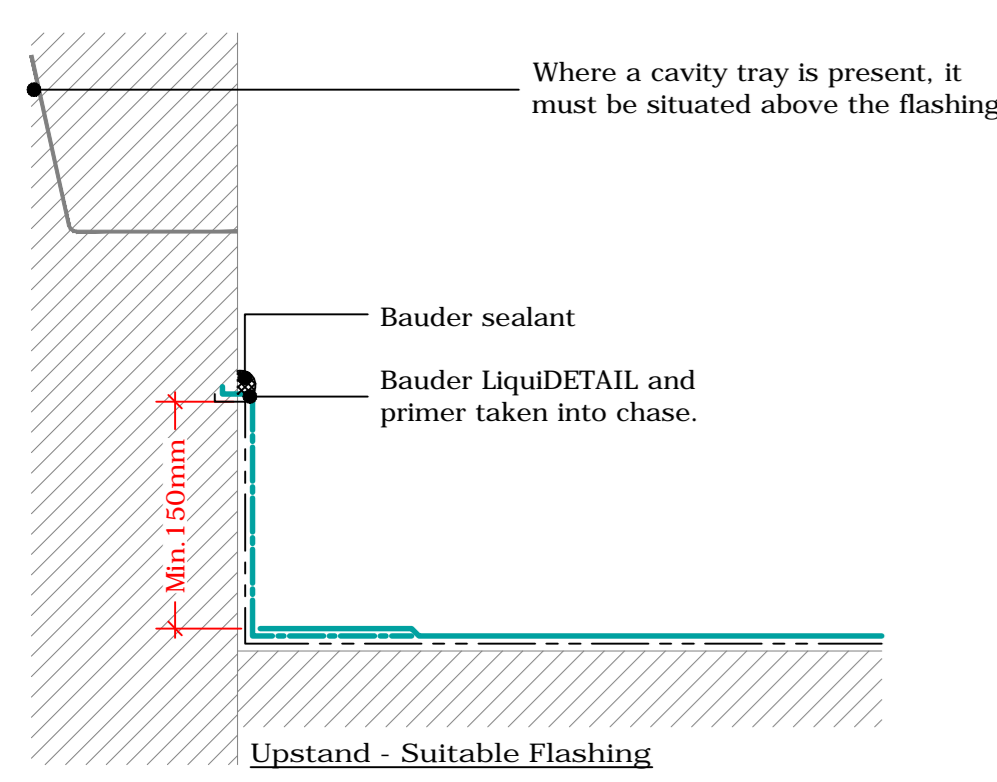
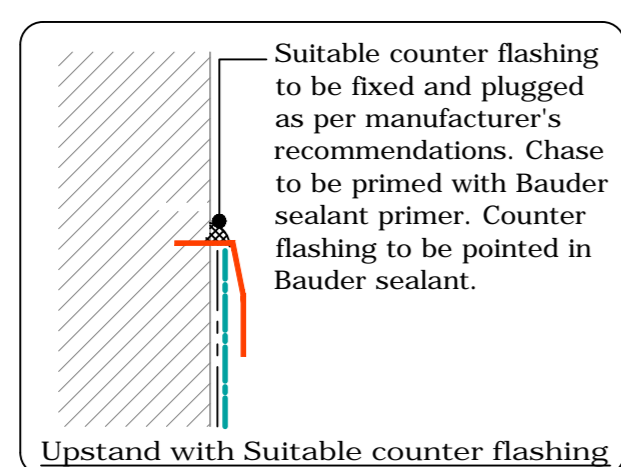
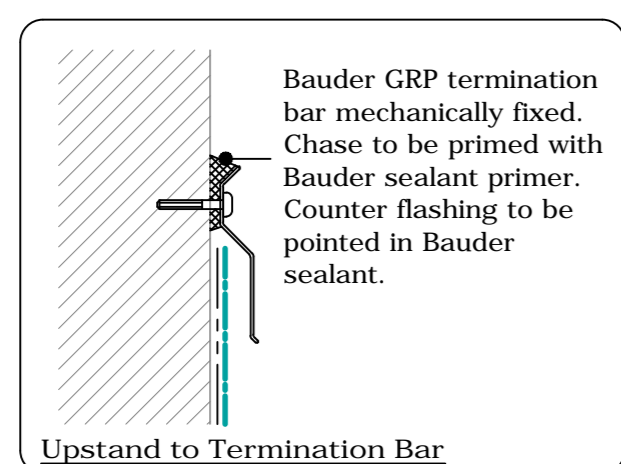
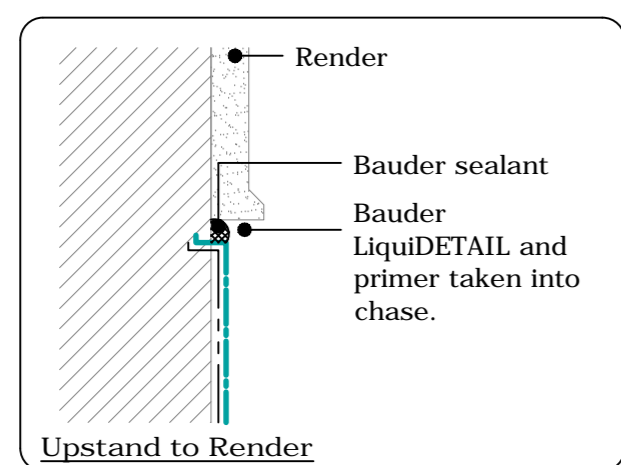
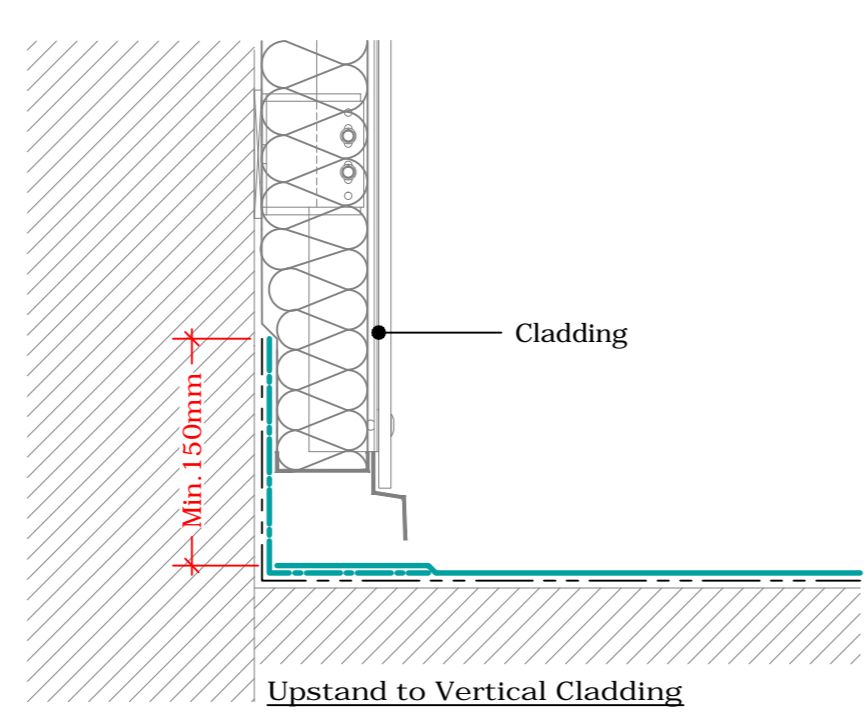


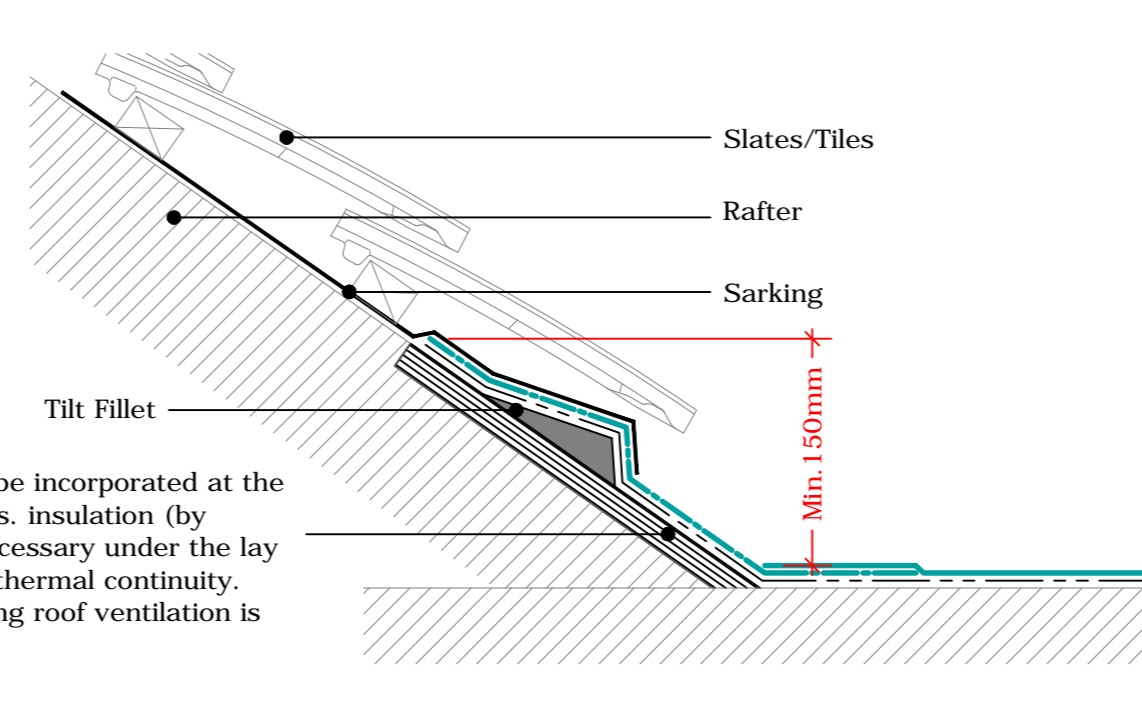
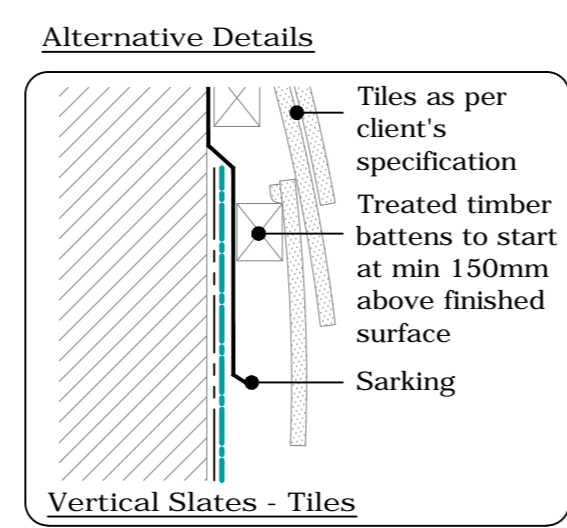
Alternative Details



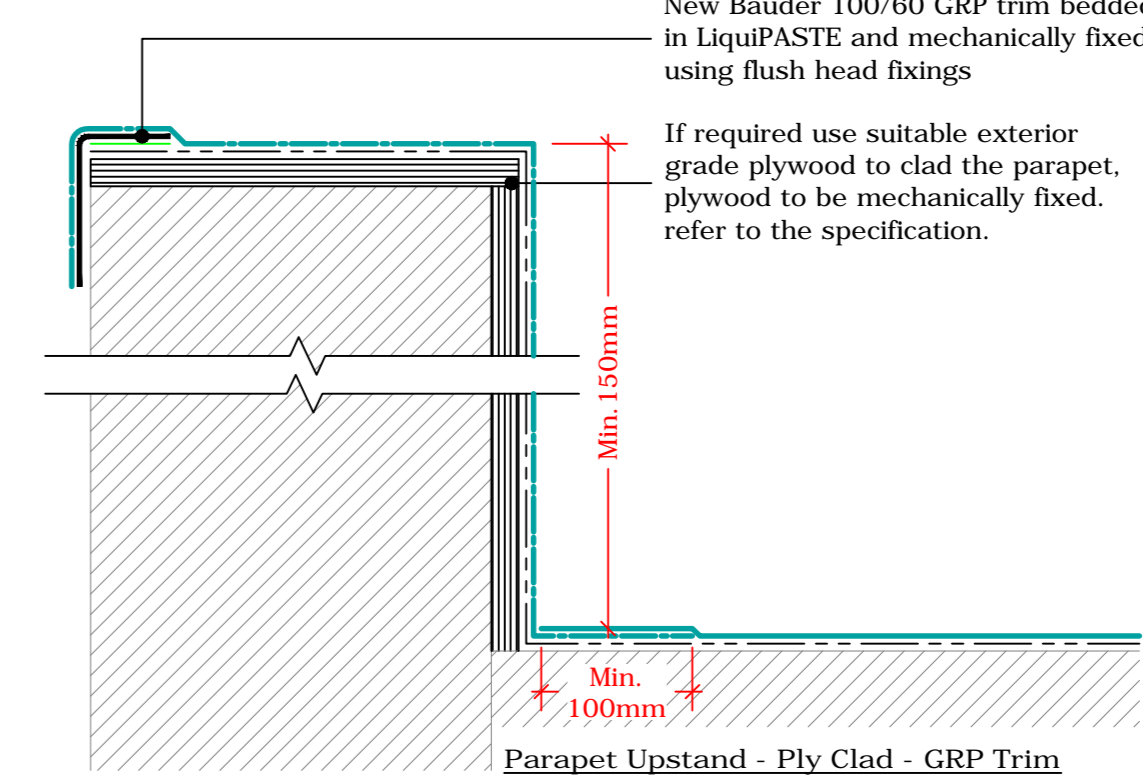
Upstand Options
(Drg.No: D0805-00C-101_001)



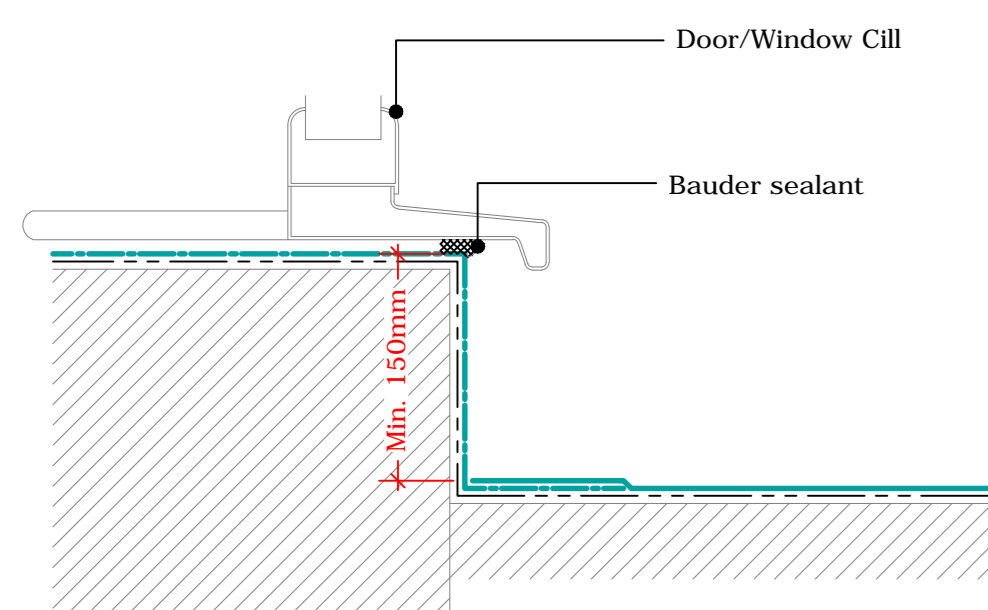
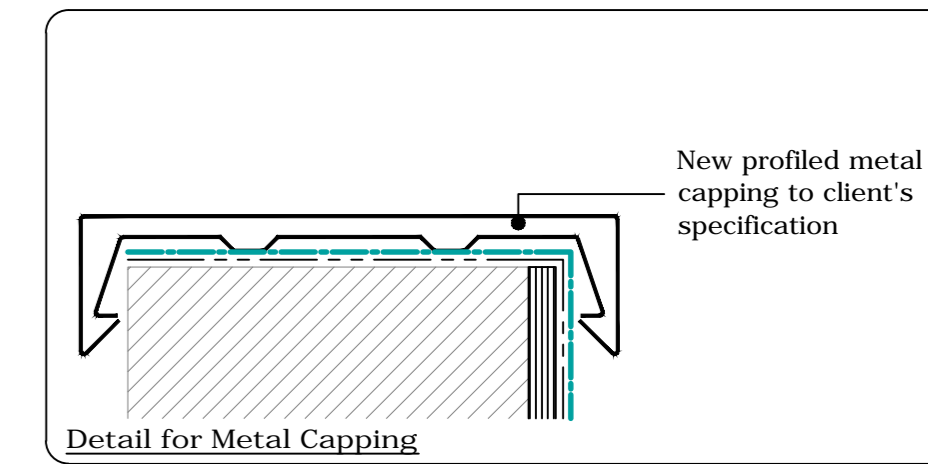
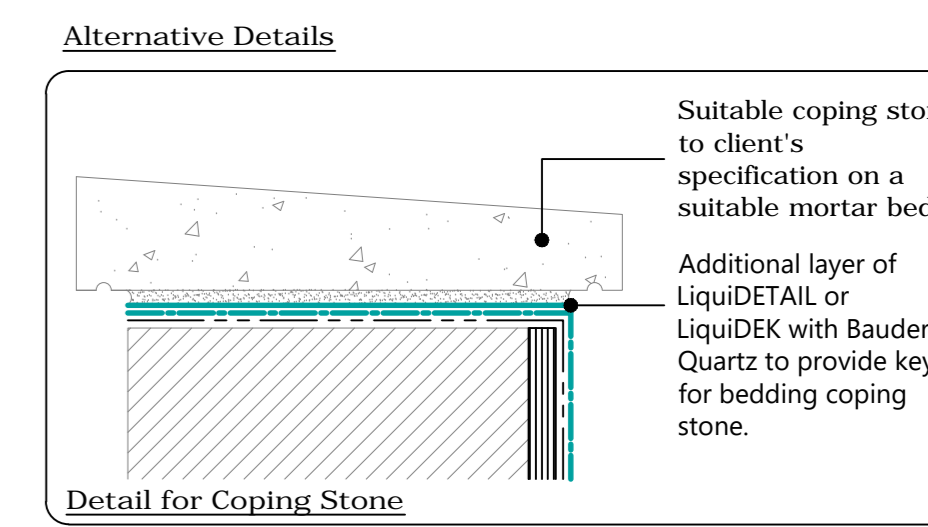
Upstand to Vertical Cladding or Slates/Tiles
(Drg.No: D0805-00C-101_002)



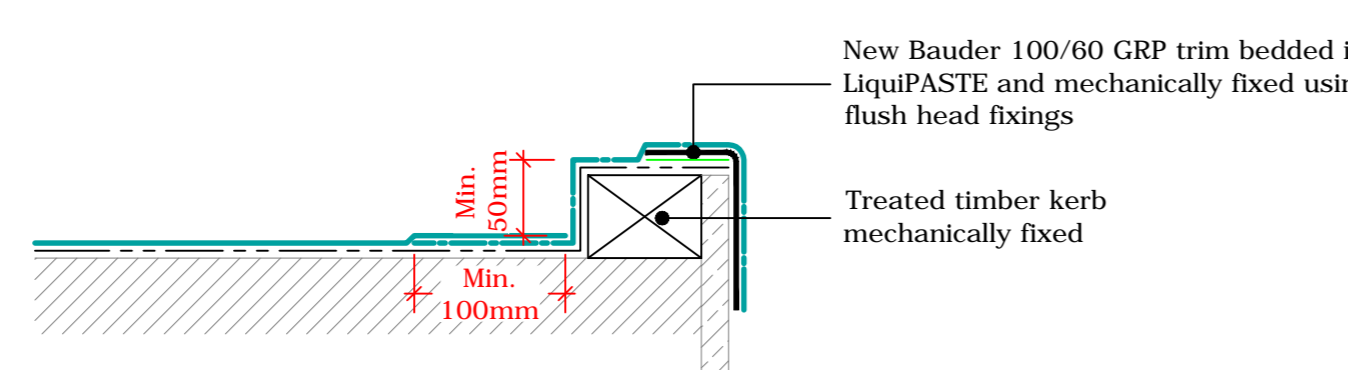
Upstand to Pitched Roof
(Drg.No: D0805-00C-001_004)



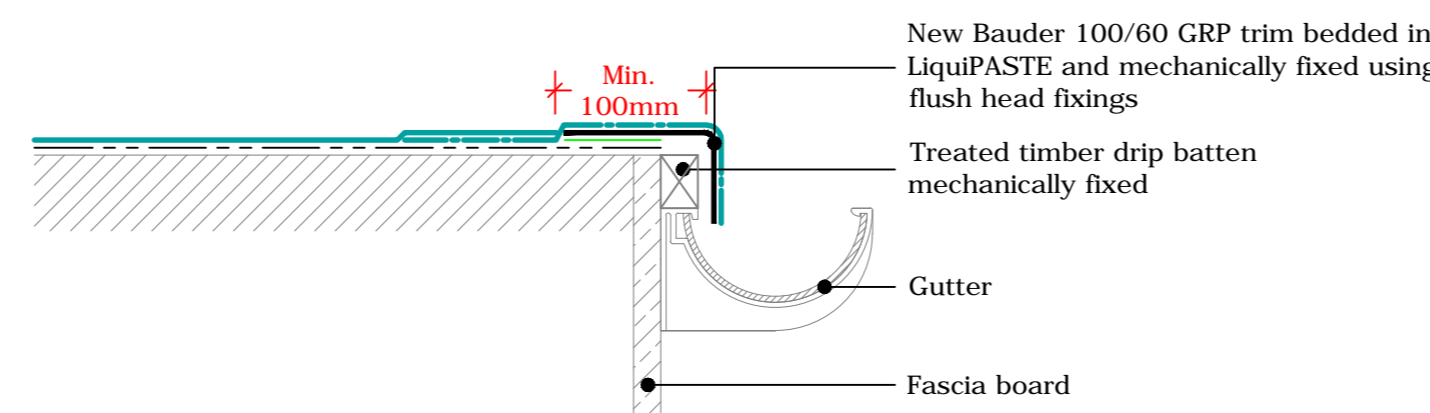
Parapet Upstand
(Drg.No: D0805-00C-103_001)



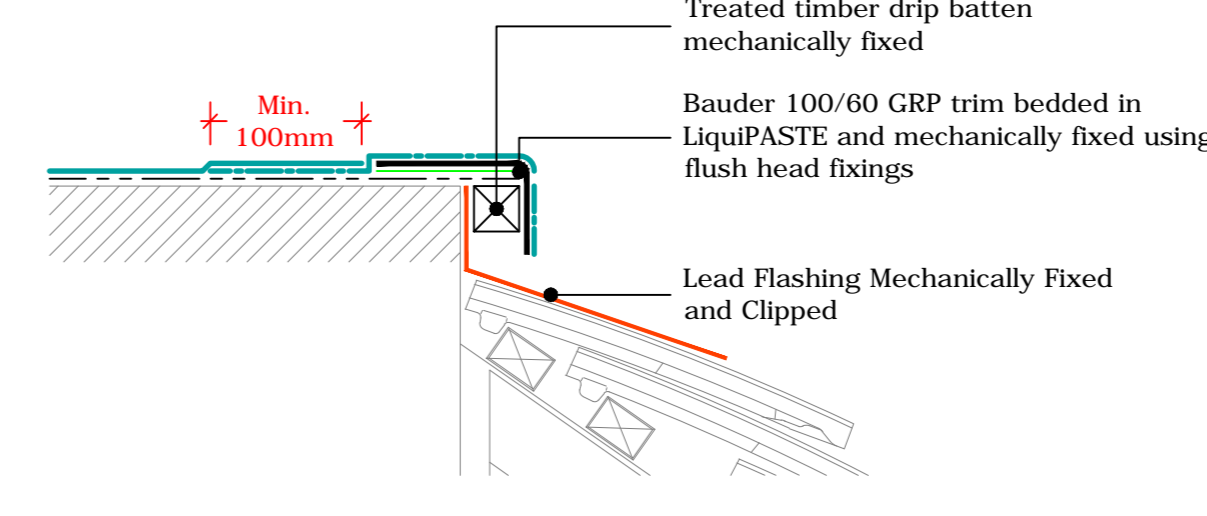
Upstand to Raised Cills
(Drg.No: D0805-00C-002_003)



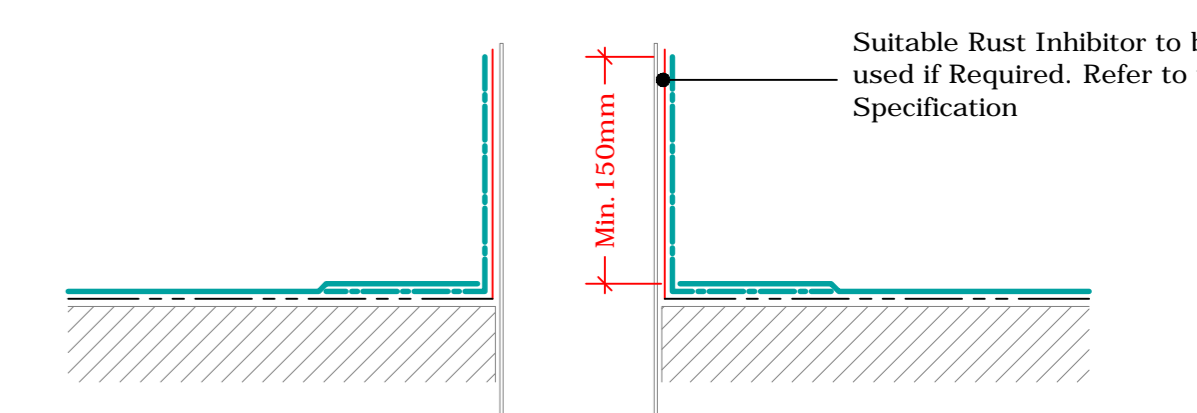
Perimeter Kerb
(Drg.No: D0805-00C-006_001)



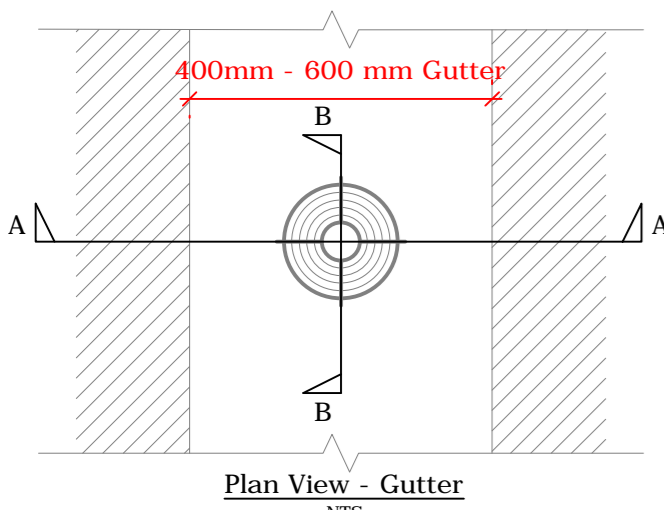
External Gutter
(Drg.No: D0805-00C-006_005)



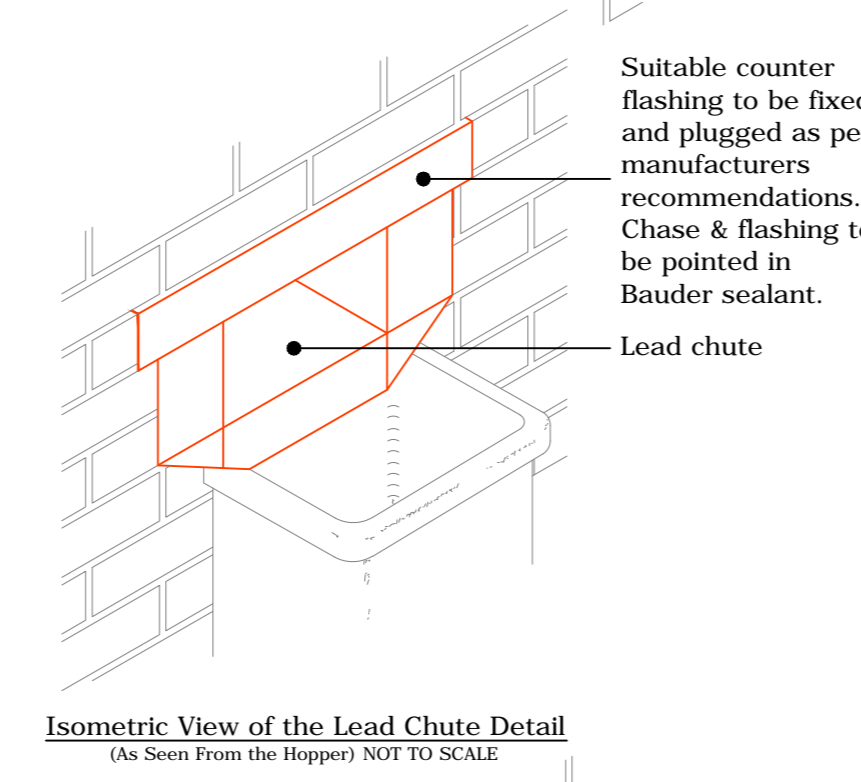
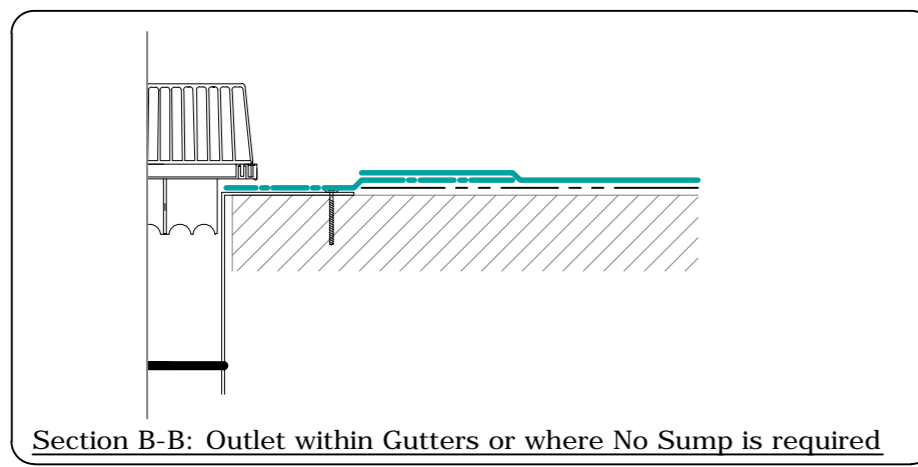
Mansard Roof
(Drg.No: D0805-00C-006_007)



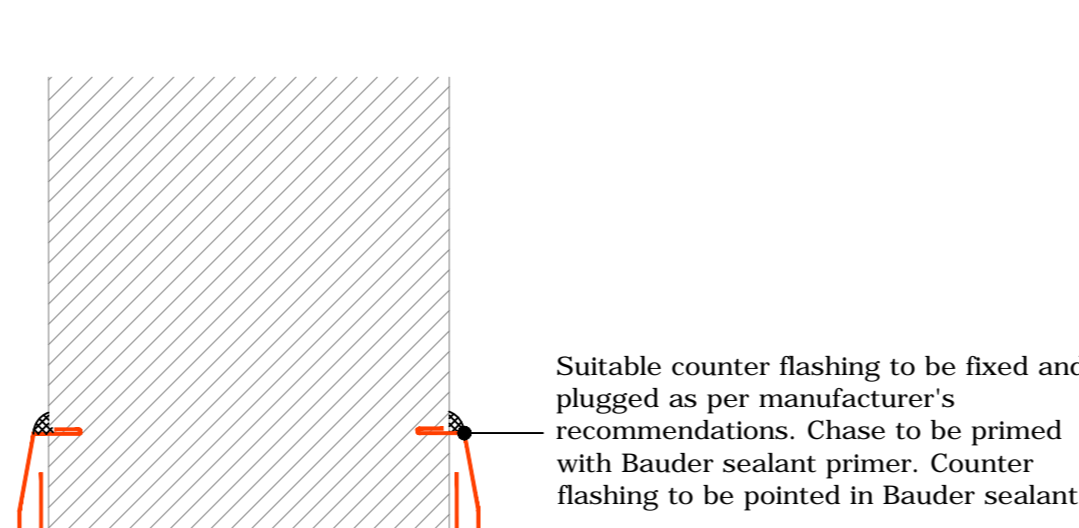
Upstand - Soil Vent Pipe
(Drg.No: D0805-00C-007_001)



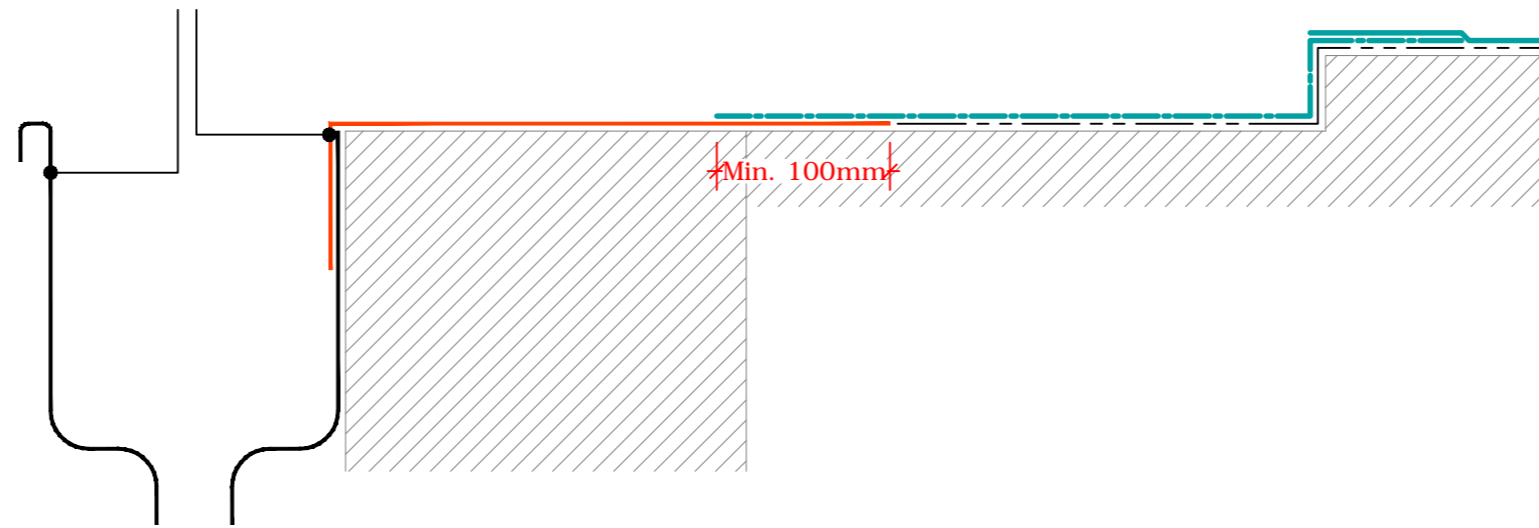
Alternative Detail



Isometric View of the Lead Chute Detail
(As Seen From the Hopper) NOT TO SCALE

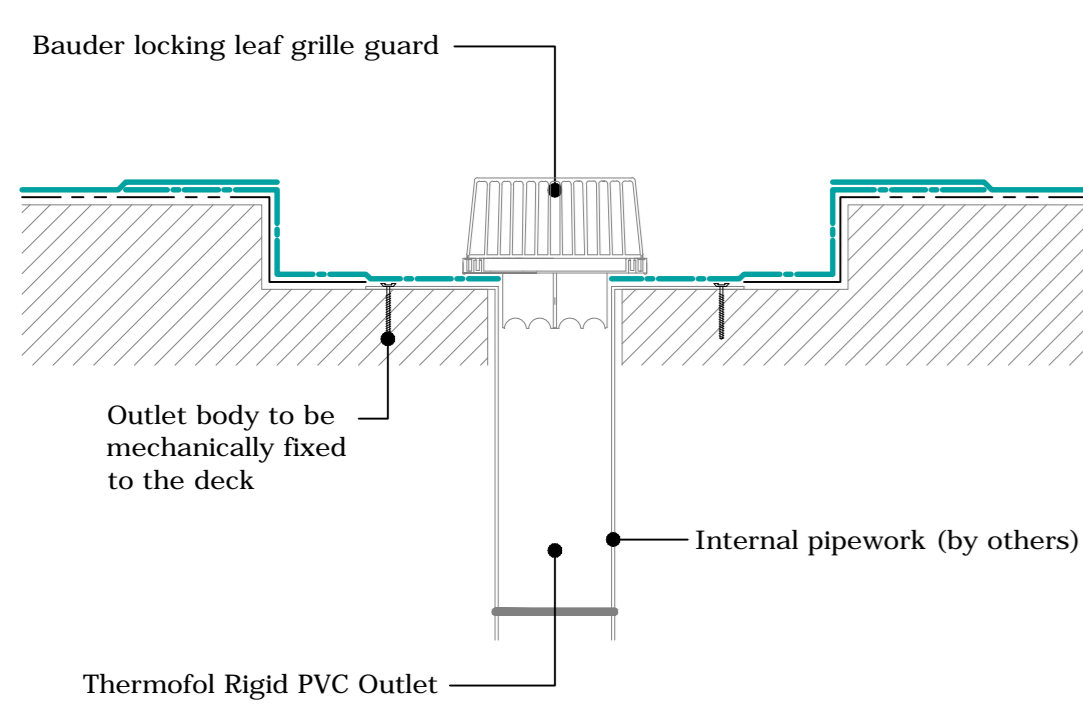


Hopper Head, Lead Liner and External Drainage By Others

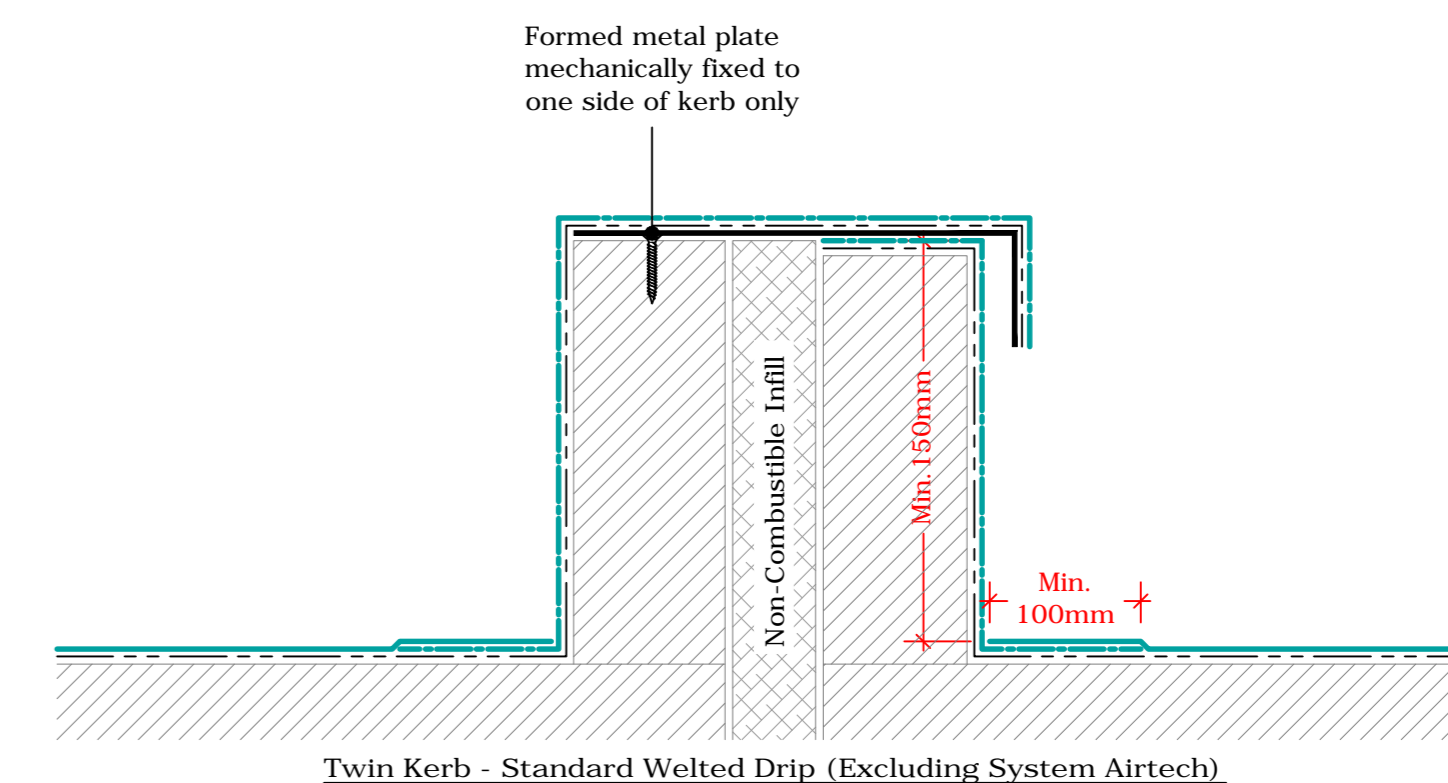


Upstand - Lead Chute
(Drg.No: D0805-00C-106_002)

Isometric Cut View of Lead Chute Detail
(As Seen From the Roof) NOT TO SCALE

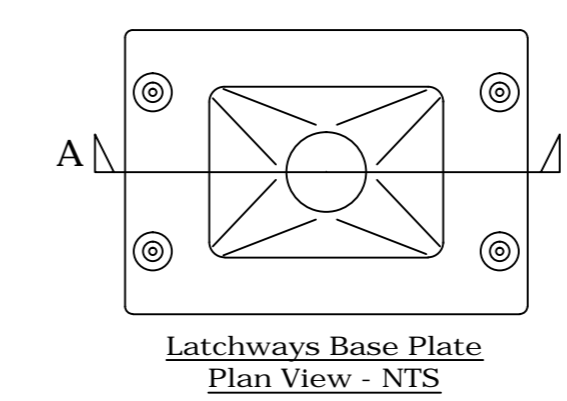


Bauder Thermofol Rigid PVC Outlet
(Drg.No: D0805-00C-006_001)

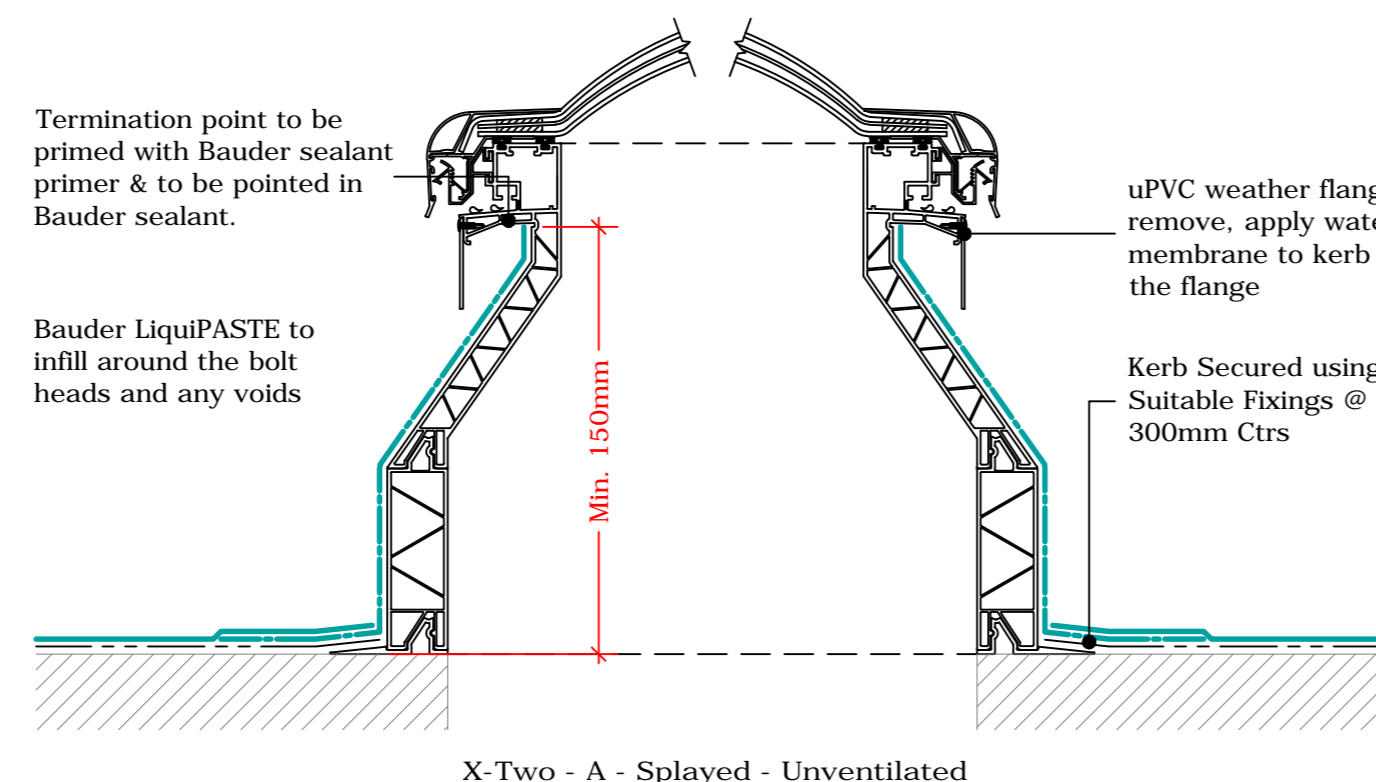


Twin Kerb - Standard Welded Drip (Excluding System Airtech)

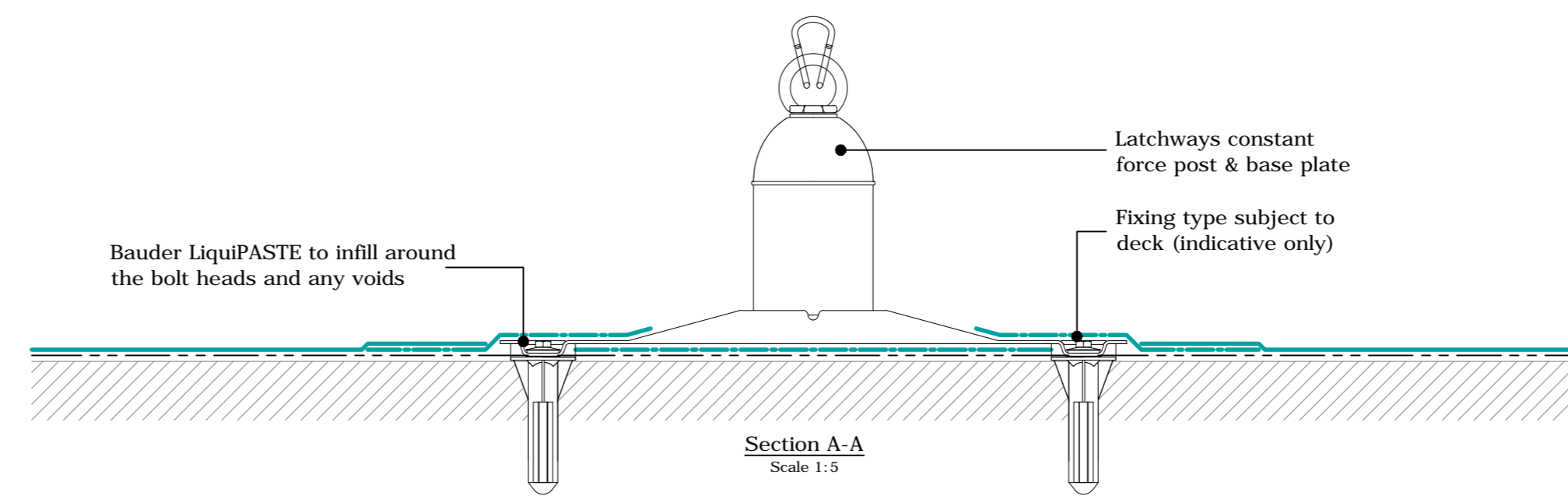
Twin Kerb Expansion Joint
(Drg.No: D0805-00C-004_004)



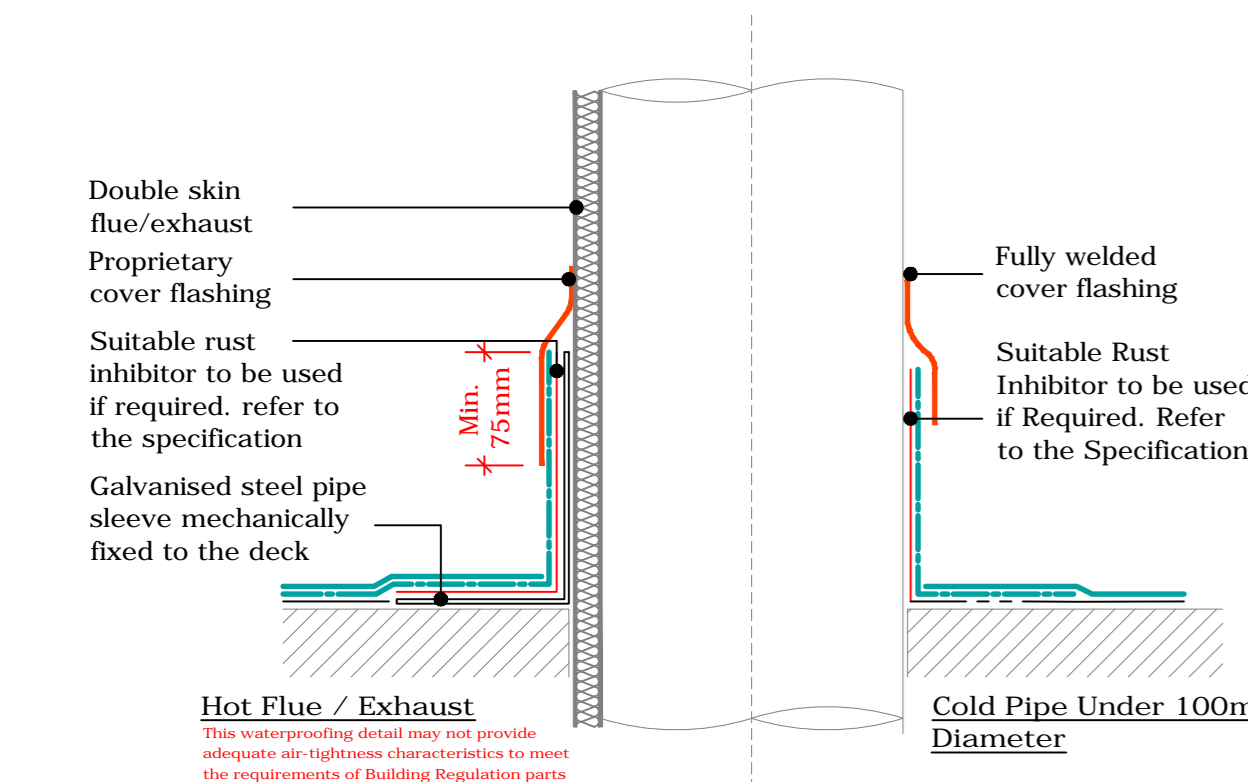
Latchways Base Plate
Plan View - N/S



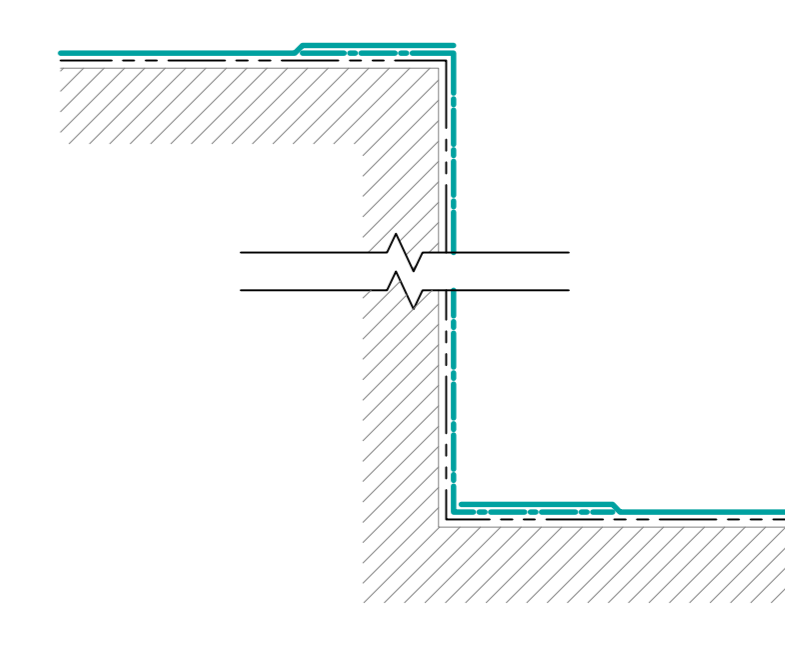
Rooflight - EuroGlaze
(Drg.No: D0805-00C-008_001)



Latchways Constant Force Post
(Drg.No: D0805-00C-009_001)



Upstand to Hot Flue and Cold Pipe
(Drg.No: D0805-00C-007_002)



Change In Levels
(Drg.No: D0805-00C-010_001)

Key	
	Bauder LiquiPRIME (Overlapping 110g Reinforcement fleece)
	Bauder LiquiDETAIL (Overlapping 110g Reinforcement fleece)
	Bauder LiquiPRIME
	Bauder LiquiPASTE
	Deck / Substrate
	Bauder 100/60 GRP Trim
	Treated Timber

- IMPORTANT NOTES:**
- This detail is suitable for the following Bauder Systems: Bauder LiquiTEC Roof Systems.
 - This Drawing Shows Alternative Options. For the Correct Solution to be Used, Refer to the Project Specific Specification.
 - Do not scale to ascertain dimensions.
 - All dimensions to be checked and verified on site prior to commencement of work.
 - This drawing is to be read in conjunction with the specification and associated drawings.
 - This detail is a guideline only, representing typical detailing conditions and illustrate the correct application of the above Bauder Systems. It may be necessary to modify this detail to suit specific project design constraints and conditions.
 - Refer to the Bauder Specification for the product description and method of application. For clarity the method of attachment has not been shown.
 - Provision should be made by the installer for mechanically fixing the top leading edge of all upstand details in excess of 200mm in height using appropriate fasteners.

BAUDER

UK OFFICE: Bauder Limited, 70 Lambour Road, Ipswich, Suffolk, IP1 0JH, England. Tel: +44 (0) 1473 237671 Fax: +44 (0) 1473 237671 Email: technical@bauder.co.uk

IRELAND OFFICE: Bauder Limited, O'Duffy Centre, Cross Lane, Castlebar, Co. Mayo, Ireland. Tel: +353 (0) 42 8662 333 Fax: +353 (0) 42 8662 830 Email: technical@bauder.ie

LIQUITEC ROOF SYSTEM (Cold Roof / Overlay)			
Scale	Drawn	Checked	Issue
1:5	MB	MB	D
Issue	CD	PH	MB
Project	D0805-00C_100_001		
Date	29.10.21		

© Copyright. This drawing is subject to copyright. No part of this document may be reproduced in any form, without the permission of BAUDER LTD.