

## LiquiPOCKET Detailing Kit

### Application Instructions





# LiquiPOCKET Detailing Kit

A two component, flexible PMMA based resin compound to seal around penetrations that require a former

Used in conjunction with RBM, PVC membrane systems, or cold applied waterproofing.



## KIT ITEMS

- 1** LiquiPOCKET Resin - 1kg metal screw-top container
- 2** LiquiPOCKET Filler - 4kg in polybag
- 3** 1 x sheet sandpaper and stirrer
- 4** Optional 1kg bag of mineral granules (charcoal, natural slate, brown or green to match adjacent bitumen membrane capsheet) at extra cost.

## ADDITIONAL DOCUMENTATION

Application instructions and detail drawings



- **Mixing the components** needs to be carried out on a protective sheet so that any spills do not come into contact with the waterproofing membranes/system.
- **Safety:** Refer to Safety Data Sheet for all storage, PPE, handling and disposal advice.

## Pre-Conditions

Refer to the project specification for the location of this product, and enclosed detail drawings.

## Coverage

Each kit will fill a volume of 2,600cm<sup>3</sup>, which is enough for approximately 250mm x 250mm x 40mm deep.

If a depth of more than 50mm is required, the LiquiPOCKET mixture must be applied in two or more layers of 50mm maximum depth, allowing each layer to cure before the next layer is installed.

## Storage

Keep in a cool dry place, above freezing and out of direct sunlight. The kit can be stored unopened for at least six months.

## Installation Precautions

**This product is not suitable for:**

- Application to surfaces with a temperature above 40°C and relative humidity over 95% or for use on surfaces with an operating temperature exceeding 80°C.
- Waterproofing a joint between surfaces which are not securely fixed together (eg. a protrusion through the deck which is not fixed to the deck).
- Waterproofing across voids.

## Mixed Products Details

- Pot life: approx. 15 minutes.
- Rainproof: approx. 30 minutes.
- Apply loads: after 1 hour.
- Colour: Black Grey (RAL 7021 approx.)
- Coverage: 2600 cm<sup>3</sup>.  
As a guide: 250mm x 250mm x 40mm deep.

# Application

## Preparation

1. The area must be clean, dry and free from dust, laitance, grease, oil and any other contaminants.
2. Plastics should be abraded to provide a key.

## Create a frame around the penetration

3. Use timber or metal angle to provide minimum 50mm clearance all-round the penetration. The frame should be 30-50mm deep and be a minimum of 10mm above any fixings that may be present.
4. Apply appropriate Bauder primer for the waterproofing to the frame.

## Waterproof the frame

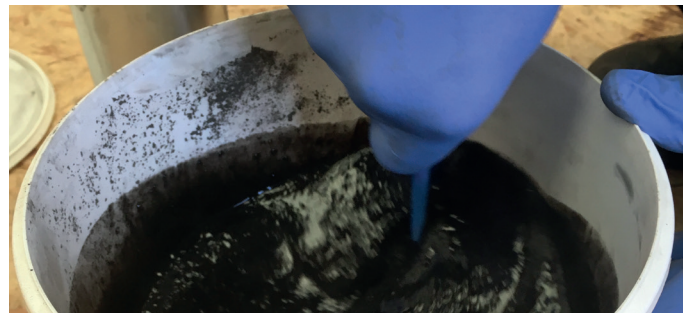
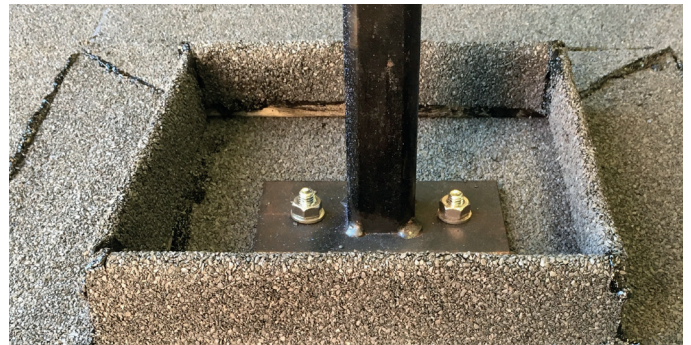
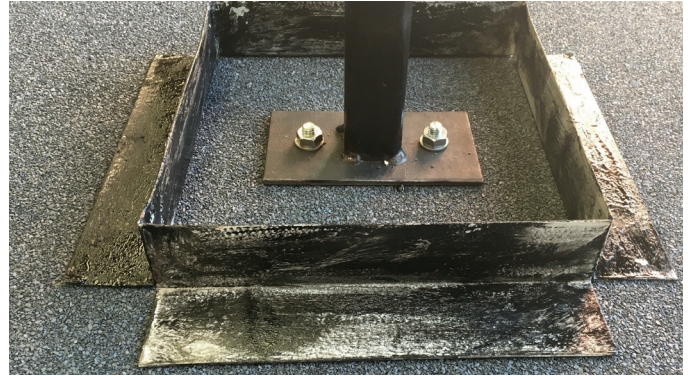
5. Use the appropriate Bauder waterproofing membrane to seal the frame and make it watertight and prevent leakage of the LiquiPOCKET resin.

## Mix the LiquiPOCKET resin

6. Pour the entire contents of LiquiPOCKET resin into the empty bucket.
7. Slowly add LiquiPOCKET filler whilst stirring until the two products are completely mixed into a smooth uniform consistency. Leave for 1 minute and then remix thoroughly.

## Fill the frame with mixed LiquiPOCKET

8. Pour the mixture into the pocket, ensuring it is completely filled to the top as this will avoid future ponding of rainwater at the detail.





# Application *continued*

## Apply mineral granules for bitumen membrane systems

9. Apply mineral granules to match the adjacent capsheet if required.
10. The mineral granules should be applied by hand immediately after the LiquiPOCKET has levelled out, and before it cures.

## Additional procedure for single ply systems

Use a timber frame to provide a minimum 50mm clearance all-round the penetration.

Use the appropriate Bauder single ply membrane to seal the frame and make it watertight and prevent leakage of the LiquiPOCKET resin.

Pour the mixture into the pocket, ensuring it is completely filled to the top as this will avoid ponding water collecting at the detail.

## Additional procedure for cold applied liquid systems

Create a frame to provide a minimum 50mm clearance all-round the penetration - the frame can be temporary or permanent.

For a permanent frame use timber or metal angle, prime with the relevant primer and apply the waterproofing over. Pour the mixture into the pocket, ensuring it is completely filled to the top as this will avoid ponding water collecting at the detail.

For a temporary frame, apply debond tape or use a closed cell polyethylene material. Once the resin has set, remove the frame and then if required apply the specified Bauder cold applied liquid system over.

## Waste Material

Unused Bauder LiquiPOCKET should be mixed and allowed to cure before disposal.



## Respecting the planet

### Reducing use of materials



This literature is only available as a digital brochure to reduce the use of paper. If you need to print it, please recycle at the end of purposeful use.

### UNITED KINGDOM

Bauder Limited  
70 Landseer Road, Ipswich, Suffolk  
IP3 0DH, England  
T: +44 (0)1473 257671  
E: [info@bauder.co.uk](mailto:info@bauder.co.uk)  
[bauder.co.uk](http://bauder.co.uk)

### IRELAND

Bauder Limited  
O'Duffy Centre, Carrickmacross,  
Co. Monaghan, Ireland  
T: +353 (0)42 9692 333  
E: [info@bauder.ie](mailto:info@bauder.ie)  
[bauder.ie](http://bauder.ie)

**BAUDER**  
making roofs secure.